

hanham&longwellgreenvoice

December, 2025 Issue 109

www.hanhamandlongwellgreenvoice.co.uk

FREE EVERY MONTH IN HANHAM & LONGWELL GREEN



Persimmon Homes Severn Valley has donated £930 for new kit to AEK-Boco FC U11 Girls Team as part of its Community Champions scheme, helping the club provide more opportunities for young female players
More details: Page 10



Jessie May makes seasonal appeal

Leukemia patient Oscar and his family are urging people to support the Christmas appeal from Kingswood-based charity Jessie May.

PAGE 12

Football club wants 3G pitch

Plans for 40 homes at the Cherry Garden roundabout and an artificial pitch for Bitton AFC have been submitted to South Gloucestershire Council.

PAGE 4

Banjo Island 'parking chaos'

Problems with street parking at Banjo Island in Cadbury Heath have worsened because drivers are trying to avoid fines, residents say.

PAGE 5

Have a heart and save a life

THE Voice is calling on readers to consider how they might help improve access to potentially life-saving devices across our area.

Our investigations have shown that even when defibrillators have been installed they are not always available around the clock.

For example, at Gallagher Retail Park, Longwell Green, the devices at Marks & Spencer, Screwfix, Wickes and B&Q can only be reached during shop hours.

A defibrillator in the foyer at Asda is not even registered with the service that informs the emergency services.

South Western Ambulance Service NHS Foundation Trust, says it is "absolutely essential" that defibrillators are registered and "emergency ready".

More devices that are accessible 24 hours a day and are maintained and registered are needed.

Report: Page 3



Fundraising for defibrillators is only part of the story

Need an Electrician ?



-Free Quotes

-Inspection and Testing

-New builds and Extensions

-Extra Sockets and Lights

-Fire Alarm, Smoke Detectors

-Anything Electrical we can do !!!

Full EICR Electrical Test from £105

Consumer unit change from £305

Elderwood Electrical

Electrical Installation, Maintenance and Testing

www.ElderwoodElectrical.com

Office:- 0117 9322379 Mobile:- 07725 058581

Hanham & Longwell Green Voice contacts

Publisher

Emma Cooper

0117 908 2121 / 07715 770448

sales@hanhamandlongwellgreenvoice.co.uk

Editor

Linda Tanner

0777 0700579

news@hanhamandlongwellgreenvoice.co.uk

Advertising Sales

0117 908 2121

sales@hanhamandlongwellgreenvoice.co.uk



Follow us on Twitter

@twitter.com/Hanham LWGvoice



Find us on Facebook

www.facebook.com/

hanhamandlongwell greenvoice

January deadline

Our January edition deadline is December 12. To ensure your news or letter is included, please contact us by then. Advertisers are also asked to contact us by the same date.

Your views

Letters for publication can be sent to the above email addresses or by post to Letters, Hanham & Longwell Green Voice, 16 Ashmead Business Centre, Ashmead Road, Keynsham, BS31 1SX. The editor reserves the right to edit your letter.

Useful numbers

South Gloucestershire Council

www.southglos.gov.uk

01454 868009

Citizens Advice Bureau

0344 499 4718

Police

www.avonandsomersetpolice.uk

General enquiries: 101

Emergency: 999

Fire

www.avonfire.gov.uk

General enquiries: 0117 926 2061

Emergency: 999

NHS Health

Call 111

West of England Mayor -

Mayor Helen Godwin mayor@

westofengland-ca.gov.uk

0117 428 6210 70 Redcliff Street,

Bristol BS1 6AL

Well Aware (health and social care information)

www.wellaware.org.uk

Freephone: 0808 808 5252

We are Bristol helpline

Freephone 0800 694 0184

Mon-Fri 8.30am-5pm

Weekends 10am-2pm

Complaints

Despite our best efforts, we sometimes get things wrong. We always try to resolve issues informally at first but we also have a formal complaints procedure. If you have a complaint about anything in the Hanham & Longwell Green Voice, contact the publisher using the details below. We aspire to follow the Code of Conduct of the NUJ (National Union of Journalists), which holds journalists to a high standard of behaviour.

Further details of the complaints process can be found on the Voice website here, or can be obtained by contacting the Publisher.

PUBLISHER'S NOTE: Hanham and Longwell Green Voice is independent. We cannot take responsibility for content or accuracy of adverts, and it is advertisers' responsibility to conform to all relevant legislation. We cannot vouch for any services offered. Opinions are not necessarily those of the editor. Hanham and Longwell Green Voice is distributed each month to residents. If for some reason you do not get a copy, please collect one from local pick-up points. Feedback is always welcomed, contact Emma Cooper on 0117 908 2121 or sales@hanhamandlongwellgreenvoice.co.uk This month 9,500 copies will be distributed around Hanham and Longwell Green.

A member of the



NEWS

Community mourns

A COMMUNITY is in mourning for a Royal British Legion poppy seller who died after being involved in a collision with a van in Warmley.

It happened as David Watch, aged 83, was crossing Victoria Road at about 8am on October 9.

Police and paramedics attended the scene. David died of the injuries he suffered later the same day.

David, or Dave to his friends and family, was born in Weymouth in 1942 and moved to Warmley in 1970 where he worked for Bristol Churches Housing Association after serving in the Army.

His family said in a statement: "David was well-liked by his neighbours and friends and loved by his wife Jean, his three adult children, and seven grandchildren.

"In recent years David enjoyed music and sport, and could be found selling poppies as a volunteer for the Royal British



David Watch

Legion, attending his church in Kingswood, playing badminton in Keynsham, playing snooker in Warmley or beating someone at Yahtzee.

"David was a valued member and a pillar of the community, described as a gentleman with a dry sense of humour. He will be missed by us all, but we are grateful for his life, inspired by his legacy, and have peace about his eternity.

"Jean would like to express a heartfelt thanks to passers-by and neighbours from the surrounding houses who acted so compassionately in the immediate moments and days since."

Alpine

LANDSCAPING

Established family firm with 25 years experience

25% OFF WITH THIS ADVERT

- ★ Senior Citizens Special
- ★ Garden Clearance — Regular or one-off
- ★ Patios ★ Fencing ★ Tree Work ★ Turfing
- ★ Hedgecutting ★ Planting (Shrubs etc)
- ★ Organic manure delivered — Also applied
- ★ Professional and guaranteed work
- ★ Brick & Blocklaying

CALL JOE FOR A FREE QUOTE
Tel: 0117 959 2143
Mob: 07891 253 122
www.alpine-landscaping.co.uk

NEWS

Have a heart: how you can all help make our community safer

THE VOICE newspaper is spearheading a campaign that could save lives in our area.

It raises awareness of the vital role that defibrillators play in saving lives and the importance of having them available for use 24 hours a day and registered with national defibrillator database The Circuit.

It follows an incident in Longwell Green in November where an elderly man was having a suspected heart attack at the crossing of Marsham Way, between Gallagher Shopping Park (also known as Gallagher Retail Park) and Asda.

Passer-by Mandy Shelton immediately called 999 and the call handler asked her if she could fetch a defibrillator in case it was needed.

Mandy says that she was told there was one available at Aspects Leisure Centre.

Mandy said: "This is on the other side of a very busy ring road. A very kind lady offered to go there but a major detour is required through Asda car park, over the bridge across the road, etc. The ambulance arrived and thankfully the defibrillator was not required as the lovely lady returned five minutes after the ambulance."

The Circuit, which is funded by the British Heart Foundation, provides NHS ambulance services with vital information about defibrillators across the UK so that in those crucial moments after a cardiac arrest, they can be accessed quickly to help save lives.

But operators are sometimes unable to direct people who phone in an emergency to their nearest defibrillator. Every minute lost is crucial.

The website DefibFinder



Retail park defibrillators are only available in opening hours

provides information on locations across the UK using data from The Circuit. DefibFinder shows that in the busy shopping area around Aldermoor Way in Longwell Green, there are defibrillators at Marks & Spencer, Screwfix, Wickes and B&Q but they are all only available during the stores' opening hours.

We also discovered during our research that there is a defibrillator in the foyer at Asda although it does not appear on the DefibFinder website and it is only available during store opening times.

Anyone responsible for looking after a defibrillator should register the device at www.thecircuit.uk

Jane Whichello, head of volunteering and community services at South Western Ambulance Service NHS Foundation Trust, says it is "absolutely essential" that defibrillators are registered and "emergency ready".

The Circuit helps ensure defibrillators are maintained by sending regular email reminders to check them over and let guardians know when the pads expire.

Then not only does South Western Ambulance Service have access to the location of the equipment, but emergency call handlers can be confident the defibrillator they are directing members of the public to is in full working order.

We hope this campaign will encourage more traders and community groups to consider applying for funding or fundraising for defibrillators that can be accessed round the clock.

Mandy Shelton says that considering the amount of footfall the area generates, especially with the new units being built in the Aldermoor Way area, more defibrillators should be available: "It may be costly but if it can save one life out of the thousands that shop there, surely it is worth it."

Defibrillators are easy to use with clear instructions, and training is not required. You can familiarise yourself now with your nearest one at <https://www.defibfinder.uk/>

24/7 potential lifesaver

Siston Parish Council has recently bought a new defibrillator with a donation from Kingswood Rotary Club.

With the permission of The Horseshoe pub at Siston Common, it has been installed on the outside wall, near the doorway and can be accessed 24 hours a day.

The parish council is grateful to WD Electrical 247 which installed it for a reduced price.





IN NEED OF MORE STORAGE SPACE?

Make use of your loft and create more space in your home.

- ✓ Loft Ladders
- ✓ Raised Loft Storage
- ✓ Loft Lighting
- ✓ Insulation

Loft storage solutions for period and new build homes that don't void your warranty.

01373 813 438

www.loftboardingsouthwest.co.uk



Steve Bellamy Carpets

- Home selection carpet and vinyl's
- Huge selection of carpets and vinyl chosen in the comfort of your own home
- Free quotations without obligation to purchase
- No pressure selling
- Professional service established for over 30 years
- All inclusive prices, no hidden extras, the price quoted is the price you pay

Tel: 07860 441776

LOW OVERHEADS = LOWER PRICES



We will better any like for like all inclusive quote

NEWS

Football club's future depends on homes plan

PROPOSALS to build 40 new homes at Bitton and secure the future of the village football club by installing an artificial pitch have been submitted to South Gloucestershire Council.

Woodstock Homes' scheme covers 2.4 hectares of land next to the A431 Bath Road. The site is currently an open field, grazing land and a football pitch.

Bitton AFC was founded in 1892 and has played at Bitton Recreation Ground since 1922. Bitton Sports and Social Club, the trading name for Bitton AFC, was founded in the 1950s.

There are 17 football teams across different age groups as well as cricket and archery clubs.

Bitton AFC has been experiencing an unsustainable financial decline and without investment, the club and its facilities will cease to operate in 2028.

Bitton AFC has estimated that the conversion of the existing first team pitch to a 3G surface will cost £960,000 and the sale of some of its land for housing will provide a capital receipt of £1.4m. This would be spent directly on improvements to property owned by the Bitton Recreation Ground charity and leased by Bitton AFC, and into the long-term financial sustainability of the club.

An artificial surface will result in significantly more playable hours in all weathers by multiple clubs, bringing in future financial investment.

The site is within but at the edge of the Green Belt and the part not in Bitton AFC's control is earmarked for housing in South Gloucestershire Council's emerging Local Plan.

There would be both market and affordable housing. The

plans include 82 parking places and 40 cycle spaces and the site is said to be in a highly sustainable and accessible location.

Woodstock Homes is a privately-owned developer based in Westbury-on-Trym in north Bristol. During a pre-application engagement in the summer 137 feedback responses were received with 54% (74) expressing support for the proposals while 37% (51) objected.

Many respondents supported family-sized and affordable homes. A majority also supported the link to Bitton AFC.

Concerns were voiced about congestion on Bath Road and match-day parking. There were some objections about building



on Green Belt land and the pressure on local schools, GPs, and public transport.

The developer says the pre-application consultation has led to "tangible refinements" to the scheme.

The planning reference is P25/02501/F and any comments must be submitted to the council by December 11.

Need legal advice?

WARDS
SOLICITORS

We offer expert services for you,
your family and your business

Get in touch: 0117 986 3504

16 High Street, Keynsham, Bristol BS31 1DJ

wards.uk.com

Offices in: Bradley Stoke | Central Bristol | Clevedon | Henleaze | Keynsham | Nailsea
Portishead | Staple Hill | Thornbury | Weston-super-Mare | Worle | Yate

Solving your legal problems ...locally

NEWS

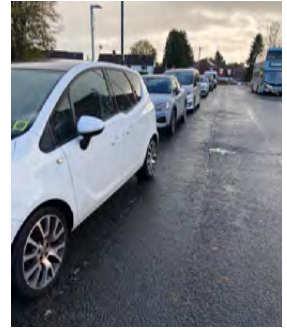
Banjo Island parking problems rise

RESIDENTS have complained about parking chaos around Banjo Island since parking charges were brought in at Cadbury Heath Hall.

People say drivers are parking on the street to avoid risking a fine for breaching the parking rules, which are enforced by a private company. The situation is especially bad at school pick-up and drop-off times.

One resident said: "It is madness. I had to do a library pick-up in the rain and ended up parking the other side of Banjo Island. The hall car park was completely empty and people were parked on both sides of the road. It must be very difficult for people who can't walk that far. Last time I wanted to pick some things up from the Co-op I was up past the school before I could park and walk back. This could kill the high street."

A few months ago the hall's management committee brought in Horizon Parking, which



Restricted parking at Cadbury Heath Hall has led to an empty car park and more cars on the streets

uses number plate recognition technology, to control use of the car park.

The hall in School Road is used by various groups and for activities and events but there was an increasing issue with vehicles parking there for extended periods. Some were using it as an unofficial park and ride for buses from Banjo Island. This was preventing users who had paid to hire the hall from

finding spaces to park.

Now visitors to the hall must log their vehicle registration number at reception. There are 14 signs around the car park and a large sign inside the hall telling people to key in their registration details to avoid getting fined.

It is acknowledged that the car park is a valuable resource for people visiting local shops, the library, and for the school run, and the new system allows a

30-minute grace period.

A £100 fine is issued for unauthorised or obstructive parking, for having no permit, parking outside of a marked bay or in a disabled bay without displaying a valid badge. Failure to validate for the full duration of the stay can also lead to a fine.

Problems with fly-tipping at the car park have reportedly lessened since the 24-hour CCTV system was introduced.

Join us for Christmas at Hanham Baptist Church



OUR CHRISTMAS SERVICES:

Saturday, 20th December at 3.00pm

At this service we remember those who aren't with us this Christmas. Light a candle, put a card on our tree, or just remember those you love.

Sunday, 21st December at 10.30am

Christmas Worship. We invite you to come along as we celebrate Christmas with thanks and fun.

Sunday, 21st December at 4.00pm

Christmas Tea and a local prayer walk, plus carol-singing for those who are able.

Wednesday, 24th December at 11.30pm

Our Christmas Eve Carols by Candlelight - traditional carols, readings and a thought to welcome Christmas together.

Thursday, 25th December at 10.30am - Christmas Day Family Service

A child-friendly service celebrating Christmas. Why not bring your presents along for us to look at too.

Sunday, 28th December at 10.30am

We wish you all a very Happy and Blessed Christmas



NEWS

Commissioner role to be axed

AVON & Somerset's Police and Crime Commissioner will be scrapped, the government has announced.

Home Secretary Shabana Mahmood said in November that all PCCs across the country will be abolished in 2028.

She said the move will save the taxpayer "at least £100 million" and help to fund frontline officers.

Ms Mahmood said: "The introduction of police and crime commissioners by the last government was a failed experiment.

"I will introduce new reforms so police are accountable to their local mayoralities or local councils. I would like to recognise the efforts of all current and former police and crime commissioners, and thank them. These individuals served their communities and will continue to do so until they have completed their current terms."

The Home Office says public understanding of PCCs remains low, despite efforts to raise their profile, and two in every five people are unaware PCCs exist.

Avon & Somerset's Labour PCC, Clare Moody, was elected in 2024, narrowly defeating Conservative Mark Shelford in an election that had a turnout of just over 23%.

Ms Moody said: "It is important to stress that this is not an immediate change. The current system remains in place until 2028, and all the important work under way, including commissioning vital support services, scrutinising police performance and building safer communities, continues as normal.

"The relationships and partnerships built remain central. This will not be a rushed process. It will be carefully planned, and more details will be shared as they become available. My focus is the same – working with police to keep people safe, supporting victims and working with partners and communities to prevent crime and harm."

A spokesperson for Metro Mayor Helen Godwin, who would take over the PCC's responsibilities, declined to comment.

Shop robber jailed

A 36-YEAR-OLD man has been jailed after stealing thousands of pounds worth of tobacco from businesses in east Bristol.

Jamie Doyle, of no fixed address, was sentenced at Bristol Crown Court on November 17 after pleading guilty to one count of robbery, four counts of commercial burglary and two counts of shoplifting.

He was jailed for three years and nine months for the crimes he committed in October.

The court heard how at around 8.10am, Doyle entered the Co-Op on Two Mile Hill Road where he violently pushed a staff member and stole thousands of pounds worth of tobacco.

His offending continued between the 9-13 October, stealing from the same Co-Op in Two Mile Hill Road, a Tesco in Bell Hill Road and another Co-Op in Church Road.

In total, Doyle had stolen nearly £5,000 tobacco, as well as

more than £60 in groceries and a £30 bottle of alcohol.

He was arrested on 13 October after stealing more than £1,300 in tobacco from the Co-Op in Church Road, St Georges.

Neighbourhood Sergeant Chris Wright said: "Shoplifting and theft is a crime that impacts everyone. For businesses, it is a significant financial loss. For staff members, it can be shocking and scary. For communities, it can have financial and personal implications. In this case, a member of staff was harmed in Doyle's efforts to get his tobacco fix, the alarm and disruption causing unnecessary stress to someone just trying to go about their daily job.

"New systems make it easier for retailers to share CCTV and other evidence with police. The new process supports effective reporting of shoplifting, allowing our officers to crack down on the crime and seek justice swiftly."

MESSAGE FROM POLICE AND CRIME COMMISSIONER

To all on duty, as we celebrate

AS we approach the festive season, I find myself reflecting on what binds us together as a community.

Christmas is a time when our streets and towns are lit up, not only by decorations but by gestures of kindness, moments of understanding, and traditions shared with families and friends.

It is also a moment to pause and appreciate the often unseen work that holds our communities together throughout the year.

I want to express my deepest thanks to the volunteers, community groups, support workers and charities across Avon and Somerset who give their time and their compassion to others.

They support families in need, offer warmth to those

who feel alone, guide young people through difficult moments, and provide care when crisis strikes.

Their dedication is not seasonal – it continues long after the decorations are taken down – but at Christmas, it feels especially important to acknowledge it.

I also want to thank the police officers, staff, and volunteers who will spend the festive period working to keep us all safe.

While many of us will be celebrating around the table with our families, they will be on duty – answering calls, protecting the vulnerable, responding to emergencies, and offering reassurance when people need it most.

Their work places significant demands on them and their families, and I am

deeply appreciative of the role they play in maintaining the safety and stability of our communities.

This time of year reminds us of the strength that comes from looking out for one another.

It is easy to feel divided in the age of online conflict and instant commentary, but the real character of our communities is found in how we treat each other face-to-face: in the conversations we have, the support we offer, the neighbour we check in on.

Small acts of kindness have the power to bring people together and remind us that we share more than we disagree on.

As we celebrate, I encourage everyone to take a moment to think of those who may be struggling, those

who are grieving, and those who feel isolated. If you are able, reach out, listen, and make space for someone who might need it. That is how community cohesion is built – person by person, gesture by gesture.

I wish you and your loved ones a safe, peaceful and enjoyable festive season.

May it be a time of warmth, connection, and hope for the year ahead.



With Police and Crime Commissioner Clare Moody

NEWS

£680,000 boost for St George Park

ST George Park is to benefit from a £680,000 upgrade.

Bristol City Council has decided plough cash from developers into upgrading play equipment and a skate park.

The investment forms part of a wider £1.1 million in parks across Bristol, funded from money raised via the community infrastructure levy. The spending was approved by councillors on the public health and communities policy committee on November 21.

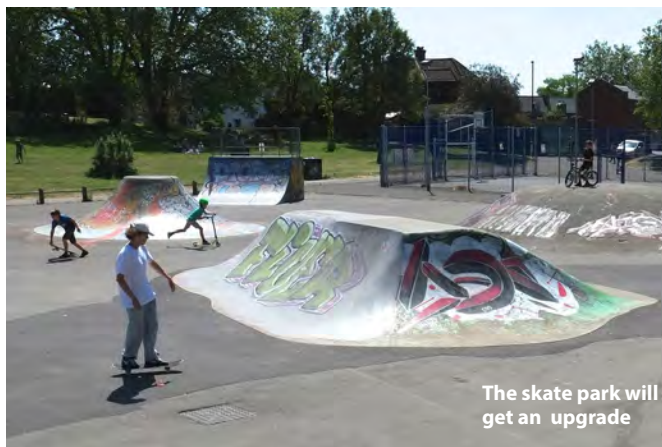
Speaking to the committee, local skater Jack Lilley said: "St George Park has become a wonderful hub for families in east Bristol and the skate park is a big part of what makes that special. Skate parks give children, teens and adults a fun, healthy way to be active, make friends and enjoy time away from

screens. But the St George skate park is showing its age.

"What used to be a bit of a challenge has now become unsafe, and without some love and attention, it risks becoming lost altogether. With the right investment, this could be an amazing opportunity to turn the space into a destination skate park which people from all over the country would be excited to visit."

Kat Macaulay-Thomas, from Play in St George Park, added: "The playground is a vital one for one of Bristol's most densely populated communities. Many of the families in our area have limited garden space and money for paid activities. So they rely on the park for play, to socialise, and to improve their wellbeing.

"We've worked for six years raising enough to deliver phase



The skate park will get an upgrade

one. This gave preschoolers safer and better facilities. But sadly it remains inadequate for the older kids, for girls and for those with access needs. If funded, the next would be transformational giving them much more exciting equipment. We're desperate to get this finished because it's been a slog for six years."

The rest of the cash will be spent on upgrading other parks in the city. £200,000 will be spent on new play equipment

in Bannerman Road Park in Easton; £50,000 will go towards a new play area in Purdown; another £50,000 will be spent on upgrading play equipment in Barton Fields in Speedwell; and £120,000 will go towards water and power supplies for coffee and food vans in parks.

All projects will be delivered between next year and 2028.

By Alex Seabrook, Local Democracy Reporting Service



SOUTHGATE
WEALTH MANAGEMENT

Associate Partner Practice

St James's Place

FINANCIAL ADVICE WITH PURPOSE | HELPING YOU GROW THE LIFE YOU WANT

- Planning for retirement
- Investment planning
- Business advice
- Protection
- Inheritance tax



JONATHAN SOUTHGATE
FINANCIAL PLANNER

FIND OUT MORE

0117 4270359

SOUTHGATEWM.CO.UK

Southgate Wealth Management Ltd is an Appointed Representative of and represents only St James's Place Wealth Management plc (which is authorised and regulated by the Financial Conduct Authority) for the purpose of advising solely on the group's wealth management products and services, more details of which are set out on the group's website www.sjp.co.uk/products. The 'St James's Place Partnership' and the titles 'Partner' and 'Partner Practice' are marketing terms used to describe St James's Place representatives.
SJP approved 20/11/2025

Live-in Care
Trust us to help you

Stay independent at home with a live-in carer



More affordable than a Care Home
We believe in only the very best care at an affordable cost

Providing live-in care since 1986

Call for a brochure today or a free assessment

01179 860710 / 0800 111 4885

Email: featherbed@featherbedhomecare.co.uk



www.featherbedhomecare.co.uk

NEWS

Grants for High St cultural activities

PEOPLE wanting to organise events in Hanham or Kingswood High Streets could be in line for a grant of up to £5,000.

South Gloucestershire Council has launched the Creative High Streets Fund, an initiative designed to bring vibrant cultural and creative activities to nine high street areas across the district.

Funded by the West of England Mayoral Combined Authority's Regional Recovery Fund, the grant programme supports voluntary, community, and social enterprise organisations, as well as town and parish councils, to deliver engaging events and activities that celebrate local creativity and culture.

Grants of £1,000 to £5,000 are available to cover the

revenue costs of activities.

Applications are now open and must be submitted by Sunday 25 January 2026.

Councillor Sean Rhodes, cabinet member for communities and local place at South Gloucestershire Council, said: "The Cultural Grants funded by the West of England Mayoral Combined Authority aim to make creativity and culture accessible to South Gloucestershire residents and help make our high streets vibrant places to spend time.

"Whether you're voluntary, community or social enterprise, or a town or parish council, we are encouraging organisations to apply for the grant so we can develop and nurture ideas that benefit the local community."

Helen Godwin, Mayor of the West of England, said:

"Bringing a broader mix of cultural activities and events can encourage people to spend more time in our town centres, ultimately helping local businesses to thrive. This regional funding, backed by the council, is a real opportunity for local communities in South Gloucestershire to come up with new ways to add even more character to some of the West's high streets. We're looking forward to seeing some inspiring ideas to help celebrate these areas."

Interested organisations are encouraged to visit the website for full details and application guidance www.southglos.gov.uk/creative-high-streets

For application enquiries, please contact highstreets@southglos.gov.uk

Community heroes: the search is on

DO you know someone who gives their time freely to help others? Someone who is making a real difference in South Gloucestershire?

The council wants you to nominate unsung heroes for the Chair's Community Awards.

They are looking for individuals or groups of unpaid volunteers

Categories are: Climate and Nature Champions; Reducing Inequalities; Supporting Children and Young People; Well-being and Independence; Building Better Communities.

Information on how to nominate: tinyurl.com/3e2n7jep

DON'T IGNORE THAT BLOCKED GUTTER!

Gutters are often neglected as part of your home's maintenance, but the consequences can result in extensive damage to both the exterior and interior of your home. **Avon Gutter Clean** can clean your gutters professionally with set, vat inclusive, prices.

Avon Gutter Clean* can clean your gutters professionally and efficiently with set prices for different property sizes

Up to 3 Bed Properties	£79
Up to 4 Bed Properties	£99
Up to 5 Bed Properties	£110
Three Storey Properties	£139



ACT NOW AND SAVE COSTLY BILLS!



BOOK IN YOUR CLEAN BEFORE XMAS AND SAVE 10%

Tel: 0117 382 2539 Mob: 07791 904568

E-mail: bob@avongutterclean.co.uk Visit: www.avongutterclean.co.uk

*Avon Gutter Clean is a trading arm of Lawnsience Ltd, 68 The Crescent, Bristol. BS9 4RR

NEWS



Zoey Ryland's spook-tacular designs in Cadbury Heath now draw crowds from far and wide

Zoey's frightfully good at garden displays

CADBURY Heath resident Zoey Ryland turned her garden into a spectacular Halloween display for the fifth year running to raise money for Crohn's & Colitis UK.

The garden was a true labour of love, built mainly from recycled materials and broken mannequins, and featured eerie props crafted with the help of her uncle, Robin Golding. Zoey also had support from eight local volunteers to bring the spooky vision to life.

She said: "It started as a lockdown project in 2020, when I was unable to work as a hairdresser at my salon Zed Hair. I had a wacky idea that if I didn't have a salon to decorate then I was going to build an American style Halloween garden."

For Zoey, the cause is deeply

personal. Her Mum, Vivien Gidman, died in 1999 at just 48 years old after a long battle with Crohn's disease, and another family member was diagnosed 12 years ago.

Zoey recalled: "I have very fond memories of my Mum making my amazing costumes out of things she found around the house or in the .She would not only do the traditional Halloween games but even make up her own like 'pin the wart on the witches nose' instead of pin the tail on the donkey. Despite her illness, she never let us kids feel like we were missing out. As an adult with IBS (not Crohn's), I don't know how she found the strength!"

What started as a local attraction now draws 1200

visitors, including 100 bikers from the Ride 2 Raise Zombie Ride Out, who make an annual stop at Zoey's spooky display.

Zoey said: "I've had visitors from Wales and even Ireland—it's incredible. "The garden costs me between £2,000 and £5,000 each year, but seeing the joy it brings and raising money for such an important cause makes it worth every penny."

The charity supports people living with Crohn's disease, ulcerative colitis, and other forms of inflammatory bowel disease. This year, Zoey's already raised £755 and hopes to beat her previous totals.

To find out more about Crohn's and Colitis UK visit: <https://www.crohnsandcolitis.org.uk/>



HATE crime based on race or religion has seen a "significant" rise in the last 12 months, says Avon & Somerset's chief constable.

Community leaders have voiced concerns that many people are starting to change how they live their lives because of fear of being harassed in the street amid a growing sense of "anxiety".

Recent months have seen unrest between mass immigration protesters and anti-

Increase in hate crime

racism counter-demonstrators in Bristol and controversy over the hanging of flags on lampposts in streets across the region.

The issue was the focus of Avon & Somerset police and crime commissioner Clare Moody's October Police Question Time session with Chief Constable Sarah Crew, which also included Stand Against Racism and Inequality (SARI)

chief executive Alex Raikes and Dan Green of Bristol-based group Bridges for Communities.

Ms Crew said: "Hate crime can have a hugely traumatic and corrosive effect not just on the individual but on the community and how society operates.

"We've been seeing lots of protests, fuelled very often by lots of feeling. There are heightened community fears

and they are borne out with hate crimes that we've seen."

Ms Crew said police have a daily monitoring operation looking at every reported hate incident, and information from social media and teams, to ensure a "robust" response.

She said there had been a "steady but consistent rise" in hate crime over the last five years in Avon & Somerset. In the year to September, all types of hate crime were up 3.1% and race- or religion-based hate crime up 4.9%.

NEWS



Storing up riches ...

CHILDREN at Cherry Garden Primary School have embarked on their well-loved Enrichment Programme this term.

The programme, which has run for eight years, allows the children to experience activities and explore talents and interests. In the past, children have had the opportunity to take part in everything from line dancing, cup stacking and archery to sewing, drama and clay. Children work with children from other classes and teachers, which adds to the school's 'family feel'. The school is proud of the programme, which staff enjoy as much as the children.

Developer boosts AEK-Boco footballers

AEK-Boco's under 11 girls team has been given a kickstart thanks to a housing developer.

Persimmon Homes Severn Valley has donated £930 towards new kit for the team.

AEK-Boco FC, formed in 2003 following the merger of AEK Rangers and Boco Juniors, boasts a strong youth section with teams ranging from U5/6s to U18s. Almost 500 children are signed on to the club, competing in the Hanham Minor, Avon Youth and Bristol Girls League.

The donation has helped support the club's commitment to growing participation in football among girls.

The team's manager Ben White said: "We're delighted to receive this support from Persimmon."

"Our youth section is thriving, and interest in girls' football is growing rapidly."

"This funding will help us provide the equipment and facilities needed to give every player the best experience possible."

Persimmon's Community Champions programme donates £700,000 annually to good causes across Britain. Commenting, Persimmon Homes Severn Valley Sales Director Carly Spear said: "Persimmon's Community Champions scheme is all about supporting great initiatives in the areas where we build."

"We're proud to back AEK-Boco FC, especially as they work hard to widen access to football for young girls."

"With women's football continuing to inspire the next generation, this donation will help ensure those opportunities are available locally."

**Are you looking
for a fulfilling role
with purpose?**



Do you live in South Glos & have a spare room?



Looking for a flexible role that works around your life, family & career?



Do you have a sense of humour?
Could you support someone to live a happy life?



ategi

Become a Shared Lives carer!

As a paid Shared Lives carer, you'll open your home to an adult with support needs—helping them live an independent, fulfilling life as part of your family and community. You could support them in the day, over a weekend or they could move in – it's up to you.

Find out more

Website: www.ategi.org.uk
Email: info@ategi.co.uk
Phone: 0117 3321 030



Charity no: 1077595 | Company no: 02894715

NEWS



Dial M for original music

STUDENTS at Digitech Studio School in Warmley were given a unique opportunity to showcase their musical prowess by composing a piece of music to replace the 'on hold' track on the school's phone system.

The winner was Leyton of Year 12

Music teacher Sam Eason said: "Leyton is a deserving winner. This project was a fantastic way to showcase our students' creativity in a real-world context."

Pupils earn Green Flag award

THERE is a buzz of excitement at Redfield Edge Primary School as the school proudly celebrates earning the Eco-Schools Green Flag Award. This is recognition of the incredible work done by their enthusiastic team of ECO Warriors, led and supported by Mrs Stiby.

Throughout the year, the ECO Warriors have shown amazing commitment to helping the planet. They've given up their own time in school to meet, plan, and take action - proving that even small changes can make a big difference. From improving recycling and reducing waste to creating greener spaces and encouraging everyone to think carefully about how we use energy, their efforts have touched every part of school life.

Mrs Stiby said: "I'm so proud of every one of them. They've worked together brilliantly, shown kindness to our planet, and learned that small actions really do add up to something wonderful."



The Eco-Schools Green Flag is an international award that recognises schools making a genuine difference in protecting the environment.

Now, with their new Green

Flag flying proudly outside the school, Redfield Edge's new cohort of ECO Warriors are already full of ideas for the school's next eco-friendly adventure.



Catholic Primary School



Hanham Road, Kingswood, Bristol BS15



As a South Gloucestershire Local Authority and Clifton Diocesan school, we offer a Catholic education which warmly welcomes families from Christian, other world religions or no faith backgrounds at all.

Parents choose Our Lady of Lourdes because they identify with something distinctive that they want for their child. It may be good behaviour... high expectations... a small, family feel... traditional values... ethos or Mission Statement. Whatever the attraction, our families are united in their commitment to our school community, and our endeavour to enable... every... single... child to flourish.

"This school makes me happy." YEAR 5 PUPIL

To see what our welcoming and nurturing school has to offer, please come along to one of our Open Days below. If you are unable to make any of the dates, please contact us to book a tour of the school.

Monday 1st December 2025 at 3.45pm
Tuesday 9th December 2025 at 9.45am

We also have some spaces available in other year groups across the school (please call the school office on **01454 867160** for more information)

CADBURY HEATH PRIMARY SCHOOL

SMALL SCHOOL.
BIG HEART.
BOLD DREAMS.



SCHOOL ADMISSION RECEPTION 2026

SATURDAY 4TH OCTOBER 2025 - 10AM
TUESDAY 21ST OCTOBER 2025 - 5PM
TUESDAY 18TH NOVEMBER 2025 - 5PM

WE ALSO OFFER 1-1 VISITS THROUGHOUT SEPTEMBER-JANUARY.
TO BOOK PLEASE EMAIL OR CALL THE SCHOOL.



CADBURY HEATH PRIMARY SCHOOL
LINTERN CRESENT, BRISTOL
BS30 8GB
01454 867215
SCHOOL@CADBURYHEATHPRIMARY.ORG.UK

BOOK A
TOUR
TODAY!



NEWS

Charity offers a Christmas lifeline

WHEN two-and-a-half-year-old Oscar was diagnosed with leukemia just weeks after moving from the US to Bristol this summer, his family found themselves navigating a frightening new reality.

"It was terrifying, especially being in a new country with no family or friends around us," recalled his mum, Karla. But support from the Kingswood-based charity Jessie May has been life-changing.

"They don't just care for his medical needs, they see him. They see past the tubes and IVs and see a little boy who wants to be loved and played with," Karla said.

Jessie May nurses first visited Oscar in hospital, then continued their care at home. These visits have brought huge relief for the family during an incredibly overwhelming time. "We'd only been in the UK for a month and had no one. I said yes to every bit of help we could get, and Jessie May was one of the charities we were referred to. I didn't even realise how much of a help it would be," Karla said.

"Oscar's on continuous IV chemo and feeds, so I have to follow him

everywhere with two backpacks. But when Jessie May nurses come in, it's like, they've just got it. I can breathe. I trust them completely, and that trust is such a gift."

"It's been unimaginable," Karla concludes, "but Jessie May has brought light into our home - and joy back to Oscar."

As Christmas approaches, the support of the charity for Karla, her husband, their six-year-old daughter and Oscar has been invaluable.

Karla said: "I'm really hoping my husband and I can go Christmas shopping one day while the Jessie May nurses are here. That might sound small, but when your child is sick and you have no family nearby, it's really hard to find those moments. Being able to step away, even for an hour, is incredibly valuable."

She's also looking forward to attending the Jessie May Christmas Party with other families.

To support the Jessie May charity seasonal fundraiser, go to <https://jessiemay.org.uk/christmas-appeal-2025/>



Leukemia patient Oscar with his Jessie May nurses

CHRISTMAS & NEW YEAR BIN COLLECTIONS

Your recycling and waste collections will change over the festive period. There will be no collections on **25 or 26 December, or 1 January**. Our Sort It recycling centres will also be closed on these dates, and will shut at **2pm on Christmas Eve**.

My collection day should be...	My collection will take place on...
Thu 25 December	Sat 27 December
Fri 26 December	Mon 29 December
Mon 29 December	Tue 30 December
Tue 30 December	Wed 31 December
Wed 31 December	Fri 2 January
Thu 1 January	Sat 3 January
Fri 2 January	Mon 5 January
Mon 5 January	Tue 6 January
Tue 6 January	Wed 7 January
Wed 7 January	Thu 8 January
Thu 8 January	Fri 9 January
Fri 9 January	Sat 10 January
Collections return to normal from Mon 12 January .	

CHECK YOUR COLLECTION DATES

Online at: southglos.gov.uk/collectiondates On the app: southglos.gov.uk/app

South Gloucestershire
Council

Delivering with you

Sort It
South Gloucestershire

NEWS

Trading Post Way welcomes Jason

JASON Browne officially moved into his new two-bedroom home at the Trading Post Way development in Bitton— a milestone moment for him and his 13-year-old son, Bobby.

Trading Post Way is a development of 48 one to four-bedroom homes that are available through social rent, affordable rent, and shared ownership.

Representatives from Alliance Homes and South Gloucestershire Council were Jason said:

"I can't believe it - I feel so lucky and thankful that we now live in this amazing home.

"Before, I was living in Kingswood in a one-bedroom flat in a large, noisy block. My son has ADHD, so he struggles with his emotions and now he's 13 he really needed more space.

"I'd been bidding on Home

Choice regularly but got nothing, then finally I got the offer from Alliance asking me if I'd like to move in here and I was gobsmacked.

"This place is fantastic. For my boy it's quiet, there's a garden and best of all he's got his own bedroom - it couldn't be better. We're both so happy and grateful for our new home, I feel the future is bright."

Sarah McQuatt, from Alliance Homes, said: "Handing over the keys to Jason is a great moment for us. It's heart-warming to see the positive impact that a good

The project to revamp the brownfield site of the former Chief Trading Post was made possible through close collaboration with South Gloucestershire Council and funding support from Homes England.

South Gloucestershire



Dawn May, of South Glos Council, Sarah McQuatt from Alliance Homes, customer Jason Browne, Councillor John O'Neill, and SGC's Kerry Cox

Council cabinet member for housing, Councillor John O'Neill, said: "It is fantastic to see Jason and Bobby so happy in their new home.

"This development has transformed the site and brought much needed affordable homes to this community, offering a range of house types that will meet the needs of families, single people and couples.

"It also it supports the

objectives of the council's Housing Strategy, and commitment to delivering new affordable homes.

"Importantly, these homes will meet the needs of those on the council's Housing Register and in need of affordable housing in South Gloucestershire.

"The progress has been swift, and I'm looking forward to seeing the remaining homes occupied soon."



"Longwell Green Primary is a wonderful school" Ofsted 2025

Looking for the perfect start to school for your child in September 2026?

Come and see why everyone has a chance to **shine** at our **thriving, caring**, two form entry school.

Our recent **Ofsted** report (Feb 2025) placed Longwell Green among the very best, recognising our focus on every child's success and happiness where:

"Everyone has a chance to shine"

"The school's vision of 'inspiring learning' is lived and breathed each day"

"Everyone is valued, included and cared for at this friendly school"

Our pupils are "kind, polite and courteous" and "extremely proud to belong to Longwell Green Primary" Ofsted February 2025

**Come and see the magic for yourself on one of our tours.
— Book now they are very popular and places go fast!**

Oct 2nd 2.00pm • Oct 14th 5.00pm • Nov 5th 5.00pm • Nov 20th 4.30pm • Dec 3rd 9.30am

Call 01454 866460 to book your place

Longwell Green Primary, where every child is inspired to shine



NEWS

Health provider Sirona's leaders criticised

THE health and care regulator has called on an organisation providing care for thousands of people across the region to improve.

The Care Quality Commission says there are "significant leadership challenges" at Sirona Care & Health CIC, with a "disconnect between leadership and frontline services".

The not-for-profit social enterprise provides NHS and council-funded community healthcare across Bristol, North Somerset and South Gloucestershire, serving a population of around 940,000 people.

The CQC announced the downgrading of Sirona's leadership rating from 'good' to 'requires improvement' in November, but said it was based on an inspection held in February.

It said the inspection was carried out "due to concerns about the quality of care across

various services and the stability of leadership following recent, unexpected changes at board level".

The CQC said: "Inspectors found the organisation was in breach of legal regulations relating to the good management of the service."

The inspectors said staff felt leaders "lacked transparency and stability" and had a culture which "discouraged speaking up and created fear of retribution".

However they also found that staff were "hard-working, dedicated and knowledgeable", and leaders worked together well in areas around the quality and improvement of care.

CQC deputy director for the South West Catherine Campbell said: "When we inspected Sirona, we found staff trying their best, but we found an organisation facing significant leadership challenges that were affecting its ability to deliver consistently good care to the communities it

serves.

"The board had been through a period of instability, with several interim appointments and departures, which meant leaders weren't working together effectively to address the serious issues the organisation faced.

"This lack of grip from the board meant staff on the ground didn't feel heard or supported.

"Many told us there was a disconnect between leadership and frontline services, and that their concerns about things like demand and capacity weren't being taken seriously or acted on quickly enough.

"When staff don't feel supported or listened to, it makes it harder for them to provide the quality of care people deserve."

Sirona has been without a permanent chief executive and chair for 18 months and had also been missing some non-executive directors and other senior leaders.

The organisation says it has

continued to have good patient satisfaction ratings despite the uncertainty at the top.

A spokesperson for Sirona said: "While it is disappointing that our well-led rating has gone down a band, this is not a reflection on the care Sirona delivers or on our dedicated and hard-working staff, but on our internal arrangements and processes as they were in February 2025.

"Since then, we have made substantial progress in our leadership, governance and culture. We have addressed and continue to address issues with recruitment.

"We are confident that, under the leadership of our new chief executive and senior team, Sirona will continue to improve significantly, becoming a stronger organisation that can better support our frontline staff as they provide vital community care to patients and their families."

DREAM DOORS®
NEW LIFE FOR OLD KITCHENS

QUALITY KITCHEN MAKEOVERS

by simply replacing the doors and worktops

MODERN

CLASSIC

TRADITIONAL

CONTEMPORARY

- > Up to 50% less than a new fully fitted kitchen
- > Replacement kitchen doors
- > Cost effective made to measure solution
- > Worktops and appliances
- > Quick installation in 2-3 days by local professionals

Checkatrade.com 9.8/10
Where reputation matters

11-12 The Promenade,
Gloucester Road,
Bristol, BS7 8AL

Call us now for a free estimate:
01179 443 223



dreamdoors.co.uk



UK MANUFACTURED

THE UK'S #1 KITCHEN MAKEOVER COMPANY

NEWS

Tributes paid to former councillor Rudi Springer

RUDI Springer, who was the first black chair of South Gloucestershire Council, has died, aged 87.

Rudi was born in Barbados on February 25, 1938, and arrived in the UK at the age of 18 on a ten-day voyage to Tilbury Dock.

He came to live in Wick, where he met and married his wife Jill and sang in the church choir.

After working at the ochre works in Wick, he moved to ICI at Avonmouth where he worked for 33 years as a chemical process operator and was a union shop steward.

On retirement, Rudi was elected as a Labour member of South Gloucestershire Council for the former Rodway ward, (Mangotsfield and New Cheltenham), serving for 15 years, including a term as chair from 1998 - 1999. He also served as Deputy Lord Lieutenant of Gloucestershire.

Rudi chaired the (Bristol



Rudi Springer as chair of South Glos in 1998-99 and more recently

Oscar) Sickle Cell & Thalassaemia Centre, and was a former chair of South Gloucestershire Safer & Stronger Community Groups and the South Gloucestershire Police Independent Advisory Group (IAG). He was a member of the National Council of the Barbados Association.

Rudi and Jill, who died 13 years ago, lived in The Reddings



as he possibly could.

"For somebody who came here on his own he did so well. It wasn't always easy but he managed to succeed."

Rudi's great passion was cricket. He played to a high standard and later was a season ticket holder at Gloucestershire's County Ground.

Staple Hill and Rodway councillor Michael Bell said: "It was typical of him that whilst working with ICI, eventually becoming the full-time TGWU convenor for a workforce of thousands, he also managed to have management agree for him to have Friday afternoons off to prepare the cricket field for the weekend games!

He added: "I have known Rudi since the late 1980s, both as a political colleague and as a friend, and he will be sorely missed in both capacities. On behalf of so many residents, groups and members of the public - thank you Rudi."

area of Kingswood and had two children, Jonathan and Sally, four grandchildren – Callie, Jade, Mitchell and Josh – and nine great-grandchildren. Rudi served as a governor at Deerswood and St Stephen's schools.

Sally said: "My dad was amazing – both my parents were. He worked really hard to give us what we wanted. He was kind and tried to help people as much

Did you know?

61% of fires start in the kitchen

For fire safety advice specific to you and your home, take **15 minutes** to complete our online **Home Fire Safety Check**.

Check now

What type of property do they live in?

Difficult types of property have different fire risks. All of your area affect the recommendations and advice given at the end of this H Fire Safety Check. Please answer the questions as accurately as possible.

<p>Detached</p> <p>A detached house or bungalow stands on its own and is not attached to another property.</p>	<p>Semi-Detached</p> <p>A semi-detached house or bungalow is joined to the house next door by one (usually) wall.</p>
<p>Terraced</p> <p>A terraced house or bungalow is part of a row of houses joined together by one or more (usually) walls.</p>	<p>Flat / Maisonette</p> <p>A flat or maisonette is a self-contained home that occupies only part of a building.</p>

BEL FIORE CAKES

Specialising in Luxury Floral Cupcakes & Cupcake Bouquets.

- Cupcake Bouquets
- Boxed Cupcakes
- Mini Cupcakes
- Celebration Cakes

- Floral Traybakes
- Weddings
- Vegan
- Gluten & Dairy Free

FOOD HYGIENE RATING: 5 VERY GOOD

www.belfiorecakes.co.uk

NEWS

'Two-tier' bin subscriptions

A "TWO-tier system" has left some South Gloucestershire residents paying for garden waste collections, while others get their bins collected for free.

Since July, South Gloucestershire Council has not taken payments from people renewing annual garden waste subscriptions after it changed the collection system.

This means some residents are paying £63 a year to have their green bins collected, while others who are unable to renew their subscriptions don't have to pay.

The council's cabinet was urged to simply accept payments at the current rate at a meeting in November.

Andrew Shaw, a parish councillor in Bradley Stoke, said: "What I don't understand is why the transition from an old system to a new system wasn't a changeover that maintained continuity of service, by putting the new system in place and testing it before the old system was discontinued.

"This doesn't look like competent operations or financial management.

"It's created a two-tier set up with some garden waste subscribers, like myself, paying for the service, while other subscribers have enjoyed the same level of service for nil



payment. So will I get a refund or will the other people be receiving a back-dated invoice?"

Mr Shaw said he estimated that the council had lost out on more than £500,000 due to not taking payments since July - more than the £400,000 it proposed to raise by increasing charges by 19% next year.

He said: "Surely the reason why the cost of the green bin collections isn't being covered is because you've been providing it free of charge for certain residents for a third of the year?"

Cabinet councillor for communities Sean Rhodes said the council was "very, very concerned" about the fee collection problem.

He said: "We're working as hard as we can to get a resolution, because with the reduction in revenue, it's not something that can carry on unresolved."

Council leader Maggie Tyrrell said councillors had expressed their displeasure over the issue and would continue to work with officers to rectify it as soon as possible.

By Alex Seabrook, Local Democracy Reporting Service

Fly-tip hotspot

STAPLE Hill & Mangotsfield is one of the five areas in South Gloucestershire worst affected by fly-tipping.

A report to the council's scrutiny commission said dumping of waste poses a "serious and escalating challenge", with 2,171 incidents recorded in the 2023-24 financial year - up 72% on a decade ago.

In the same year there were only 18 prosecutions and 15 fixed penalty notices.

The report said there were "notable hotspots in both urban fringes and rural lanes".

Among the problems was restricted access to recycling centres, which are only open from 8.30am to 4.30pm and are difficult for people without cars to access, as they cannot book a visit online and instead have to phone or email the council.

Another was a lack of awareness that unlicensed 'man in a van' operators could fly-tip waste and that leaving unwanted items on the pavement or roadside for others to take was also fly-tipping, with some being left out for weeks.

NEWS FROM THE METRO MAYOR

We need to lift children out of poverty

SIX months have now passed since my election as Mayor of the West of England.

I'm proud to be doing things differently, and have taken the time to reflect on what we have already achieved together in this new chapter for our region.

Kids Go Free this summer saw more than 910,000 free journeys for children and young people across our region, putting almost £1 million back into the pockets of parents or carers.

We've already secured the best part of £1 billion for our region - including £752 million for better buses, more trains, and mass transit plans.

On top of that, the government is investing £40 million into Twerton and Hartcliffe, devolving £25 million for us to grow our creative industries, and funding solar panels for two dozen schools.

Working with council leaders and partners, we're investing in new and existing train stations, rolling out green electric buses, and launching new routes.

Regional funding is supporting better walking and cycling options across the West, and investing in parks and high streets.

Together, we've launched an ambitious new Growth Strategy, with a plan for 72,000 new jobs over the coming decade.

Our new business board will help secure investment, while the Youth Guarantee gets more

young people into work and training.

We've made a strong start but there's more to do, and the best is yet to come.

One of the issues that we can - and must - tackle together is child poverty.

The West is seen as an affluent, progressive region but that reputation belies a painful reality.

In Bristol, 35% of children are growing up in poverty. In some parts of our towns and cities, every other child faces that daily uphill battle.

Our rural areas face similar challenges, with between one in four and one in five children in poverty, compounded by isolation and a lack of opportunity.

This means hungry children unable to learn or play, families bouncing between temporary accommodation, parents blocked from work by constrained childcare, and people cut off from family, services, and social life by unaffordable travel.

This month, building on the commitment in our Growth Strategy, I will be publishing a regional child poverty action plan to complement the work of government and use local levers to help lift as many children as possible out of poverty.

Working with amazing local organisations, we can make a generational impact on the life chances of our most precious asset: our children



Metro Mayor Helen Godwin
writes for the Voice

and young people.

National reforms including the extension of free childcare, school meals and breakfast clubs, funding for new nursery places and 1,000 family hubs, are already making a difference that families can see and feel here, even before a national child poverty strategy is published.

From next April, 2,000 more schools will join the breakfast club scheme and, from September, another 500,000 more children will get free school meals.

I'm determined as your mayor to use every possible lever to try to break the cycle of poverty and give people hope.

NEWS

Council tax and charges set to rise

COUNCIL tax for South Gloucestershire residents is set to rise by 4.99% next year - the maximum allowed without a local referendum.

Green bin charges are also set to rise again, while cuts to services are also planned.

The changes are included in the council's draft annual budget, which is out for public consultation until December 21.

The council says every 1% increase in tax brings in about £1.9 million of extra funding for local services, and a smaller increase would mean having to make even more cuts than proposed.

It says it is facing "rapid increases" in costs in areas such as transporting youngsters with special education needs and disabilities (SEND) to school.

Garden waste collection charges rise by 19%, from £63 to £75, "to continue to cover the costs of providing the service".

When fees doubled from £30 to £60 in 2024, leaders pledged that future increases would be only by the rate of inflation, which is currently under 4%.

Meals on wheels, pest control and the HandyVan household repairs service face cuts or increased charges.

The council says that although they are highly valued by residents, council taxpayers are subsidising all three, and it is not legally required to provide any of them.

The community meals service, better known as meals on wheels, is currently losing more than £125,000 per year – about £2.20 for every meal delivered: the price people pay for meals has been frozen at a heavily discounted rate, while costs have risen sharply.

The council said an increase in meal charges will help offset some of the losses.

It is also considering an end

to subsidises for the HandyVan service, which provides services from plumbing and kitchen adaptations to decorating and even flat-pack furniture building, and offers discounted rates to over-60s and people with disabilities and consistently doesn't cover its costs.

The consultation said the pest control service also does not make any money, adding: "This is not a service which the council must provide, and there are companies in the private sector who offer a good value alternative."

Other cost-cutting measures include cutting funding to town and parish councils for public toilets and parks, as well as flood prevention work.

The document said: "Some areas are more susceptible to flooding than others."

"We plan to increase how often we clear drains and

gulleys in the areas which are most prone to flooding, but to create capacity to do this, we need to reduce how regularly we do this in other places."

The Liberal Democrat/Labour-run council's leader, Maggie Tyrrell, says she wants to encourage everyone to take part in the budget consultation.

She said: "We have set out how the current difficulty and uncertainty about the funding we receive, and the surging demand for some of the most expensive services that people rely on, is affecting the council."

"Wherever we can, we want to work together, with individuals, communities and partners to find ways to reduce the impact of needing to make cuts to spending."

The consultation can be found online at www.southglos.gov.uk/budget

By Adam Postans, Local Democracy Reporting Service

DOUBLE NFA25 AWARD WINNERS!



We're incredibly proud of our very own...

Adam Smith: Office Manager of the Year
Bradley Barber: Young Person of the Year

Both received national recognition in competitive categories at the 2025 National Fenestration Awards, with tough competition from nominees across the UK.

Their hard work, passion & dedication reflect everything The Window Hub stands for and we couldn't be happier to see their efforts recognised.



G25 AWARDS FINALIST

The excitement doesn't stop there as we're also one of the TOP 4 Installers in the UK & the only company short-listed in Bristol, Gloucestershire, Somerset & Gwent for the G25 Awards this November.

Wish us luck!



Come visit our showroom

72-74 High Street, Staple Hill, Bristol BS16 5HN

info@thewindowhub.co.uk

www.thewindowhub.co.uk

Get in-touch today for a FREE no obligation quotation

0117 3134 862



NEWS

Cocaine charge

A SOUTH Gloucestershire councillor has been suspended from the Labour Party after he admitted being in charge of a vehicle after taking cocaine.

Matt Palmer said he could not remember taking the drug but was suffering mental health problems and taking strong prescription medication at the time of the early-hours incident in July.

Cllr Palmer represents the New Cheltenham ward, which includes the Siston Hill estate.

He pleaded guilty to being in charge of a vehicle while above the limit for a specified controlled drug at Bristol Magistrates Court on November 10, and is due to be sentenced in December.

Cllr Palmer said he would continue to sit as an independent councillor. He has chaired the health overview scrutiny committee this year and used to be a lead councillor for planning.

Bitton and Oldland remember



Poppy wreaths in tribute to the fallen

BITTON AND OLDLAND ROYAL BRITISH LEGION

THE Garden of Remembrance at Panes Green was dedicated by Branch Chaplain the Rev Steve Britton on October 24 and the exhortation was spoken by Colonel Jon Beake, Commandant of the Bristol Army Cadet Force.

The first wreath was laid by the Chair of Oldland Parish Council,

Councillor Martin Farmer, the Last Post was sounded by Rob Tyley and Andy Down was the Standard Bearer.

During the following fortnight poppies were sold at many locations including Asda, Aldi and B&Q. The total raised by the Bitton and Oldland Branch to date is over £30,000 a record for this stage in the year. Dawn Harrill, the Poppy Appeal Organiser, sends a thank

you to all who gave and to the many volunteers who collected.

Remembrance Sunday saw well attended services across the area and finally on Armistice Day itself at 11 on 11 November children of the Meadows School in Bitton held a service at the Bitton War Memorial when they recited 'In Flanders Fields' and laid Poppy crosses each inscribed with one of the 48 names on the memorial.



Children from The Meadows on Armistice Day

THOUGHT FOR THE MONTH WITH COLIN HYLTON-JONES, STAPLE HILL SALVATION ARMY

Don't forget the reason for the season

AFTER last year's success of walking up Ben Nevis (the highest mountain in Scotland), this summer we found ourselves camping in the shadow of Scafell Pike, the highest mountain in England. Why not, we thought, let's walk this one! Unfortunately, our campsite was on the opposite side of the mountain and necessitated a 2-hour drive round the base to get to our start point. After an early start, followed by a long walk, the thought of a 2-hour return drive didn't appeal. A quick look at the map and then reprogramming the Satnav, found a quicker, shorter alternative route using B roads and farm tracks. What my map and Satnav didn't tell me was that this route took us over

'Hardknott Pass', which has the following description:

The Hardknott Pass in the Lake District is widely considered England's hardest road due to its extremely steep gradients, hairpin bends, and single-track design. It has a maximum gradient of 33% (1 in 3) and is known for being particularly challenging and treacherous for drivers.

I can testify to the accuracy of this description, as it was an extremely hard route to navigate, especially in a car designed for family holidays rather than off-roading. However, we carefully managed to navigate the route until just reaching the

summit of Hardknott Pass, when we had to stop to give way to an oncoming car. Unfortunately, in addition to the gradient, the gravel on the road meant we couldn't achieve any traction even with the family out of the car and pushing. We were stuck. The only solution was to reverse back where the gradient was less steep and the road surface more stable. The family jumped back in the car and with some acceleration we were able to conquer the summit and slowly make our way down. It was at times a challenging drive, more challenging than walking Scafell Pike!

Christmas is a busy time with many demands on our time and resources, and we



can lose focus on the reason for the season and forget the simplicity of the Christmas message. In John's gospel (John 1:14) we are told that Jesus ... 'made his dwelling among us'. This Christmas take time, reverse and spend some moments reflecting on God's gift for us all, the birth of His Son and make space for Him to 'dwell' with you.

WHAT'S ON

DECEMBER EVENTS

DECEMBER 2ND

KINGSWOOD HISTORY SOCIETY, Next meeting is the AGM which will include an American Supper and Quiz (please refer to website www.kingswoodhistorysociety.org for any late change). Park Centre, Kingswood, Tuesday 2nd December, 7pm for 7.30pm start. Visitors £4 incl tea/coffee and biscuits.

REGULAR EVENTS

MONDAY

LONGWELL GREEN ART CLUB, no tutors. Would you like to do your own thing in the company of a small, friendly group that meet Mondays 9.30 to 12.30, arrive and leave as you please. URC Wesley room. Contact Jackie on 01179600273 or email colown@blueyonder.co.uk

YOGA CLASSES AT HANHAM COMMUNITY CENTRE

- Monday evenings 7-8 pm. To book your place or for further information please email yogashula@hotmail.com or Text/ Tel 07949333548.

TUESDAY

LIP READING CLASS, 1.30-3pm at North Common Village Hall, Millers Drive, BS30 8YH. Contact Mary Hall 07790 283939, lipreadingmary@yahoo.com

TUESDAY CLUB a social group meet every Tuesday 1.45-3.45pm at Longwell Green Community Centre

EXERCISE AND FRIENDSHIP GROUP at The Community Project in Cadbury Heath (BS30 8EL) every Tuesday, 11:00 – 12:30. Join our over 65s. Improve strength, balance, and more in a fun, inclusive environment. Just £5/session includes tea/coffee and chat. Don't miss out on boosting your well-being! For more information contact Adam - 07875503586

LONGWELL GREEN LADIES GROUP meet at 2pm on the first and third Tuesday of each month at the United Church, Bath Road, Longwell Green BS30 9DU (opp. Aldi). Please phone Maureen on 0117 9322341

LONGWELL GREEN SHORT MAT BOWLS CLUB, We meet Wednesday and Fridays 1.30 to 3.30 at the Longwell Green community centre, Shellards road, in the California suite. All equipment provided. Beginners very welcome. We are a

friendly group who need additional members. Email. Michael8bence@gmail.com. Tel 07800869837

WELSH CONVERSATION GROUP

The Old Manor House, Keynsham 7pm-830pm 3rd Tuesday of the month 15th July (Aug holidays) Free. Organiser Catherine Dhanjal Call Catherine on 07941669925 or follow <https://www.facebook.com/CymraegBrysteCaerfaddon>

HANHAM TENNIS CLUB

Adult Play - Tuesday & Thursday evenings and Sunday afternoons. Monday, Wednesday & Friday mornings, 9.30am - 11 am. . Beginners' session coaching - Wednesday 7-8pm. Junior coaching - most early evenings. New players welcome. Fully qualified LTA coaching. See website for details www.hanhamtennisclub.co.uk

WEDNESDAY

BARRS COURT PROBUS CLUB

Retired and semi-retired Professional and Businessmen: Meet 2nd and 4th Wednesdays 10-12 at Longwell Green Community Centre. Please contact our Membership Secretary, Mick Funnell: 0117 932 4104 or email bcprobusclub@gmail.com to arrange a visit. Website: <https://barrscourtprobus.org/>

BARRS COURT LADIES CLUB:

Wives and partners of the Probus club members meet 10-12 on the second Wednesday of each month at the United Church, Bath Road, Longwell Green. Website: <https://barrscourtprobus.org/>

FILTON COMMUNITY BRASS BAND:

We are a community brass band with a huge emphasis on being friendly and playing at community fetes and a few concerts. We practise on Wednesday evenings in Kingswood and would love to encourage developing players and those who may not have played for a few years to join us. To find out more, find us on Facebook or email filtoncommunitybrass@gmail.com

ZEST CHOIR is an inclusive happy singing group for all adults who love to sing - even if you think you can't or might be Tone Deaf! We meet Term Time Wednesdays at Longwell Green Community Centre from 10.15am-11.45am and from 7-8.30pm. Contact Mary on 07954 170532 www.zestchoirs.com.

LONGWELL GREEN PROBUS CLUB meets at Warmley Community

Centre on the first and third Wednesday of each month.. New members welcome- for details contact Mike on 07817094147

HANHAM BRIDGE CLUB

Every Weds 7-10pm at Hanham Community Centre, new members welcome. See www.hanhambridgeclub.co.uk or call Graham 07790 491564.

HANHAM AND KINGSWOOD PHOTO CLUB.

A friendly club welcoming photographers of all abilities to share our hobby. Meeting 7.15pm for a 7.30pm start on most Wednesdays, St Barnabas Church Hall, Warmley, BS30 5JJ. See the website for where meetings will be held (some on Zoom & some evenings out). For details visit <https://www.handkphoto.club> or contact Geoff Mallin at email address, geoffmemsechps@gmail.com

RWP BADMINTON CLUB play at Hanham Woods Academy 6.30-7.30 social club, 7.30-9.30 league club. Visitors welcome, please look at the website for more details

LIP READING CLASS, 10am-noon, Warmley Community Centre. Termtime only. Contact Mary Hall 07790 283939, lipreadingmary@yahoo.com

FRENCH CONVERSATION GROUP

The Old Manor House Hotel, Keynsham 7pm-830pm 4th Wednesday of the month 23 July (Aug hols) Free. Organisers Steve James & Catherine Dhanjal Call Catherine on 0794 1669925 or join L'Amicale Francaise de Keynsham <https://www.facebook.com/groups/429989176573347/>

OLDLAND VILLAGE CLUB

Wednesday Weekly Bingo. Books on sale 7:15pm with Eyes Down 8pm. Open to Members and Non-Members. Over 18s only.

OLDLAND VILLAGE CLUB

Monthly Coffee Morning take place every 3rd Wednesday of the month, 10:30am start; open to all, cake donations for the table greatly appreciated.

THURSDAY

AVON SCALE MODEL SOCIETY

We are a small friendly club, all subjects are included, aircraft, cars, armoured vehicles, fantasy, etc we meet on the 3rd Thursday of the month, at St. Anne's Hall, Barry Road, Oldland Common. at 8pm. Please contact Ian on 0117 9603435

Join our SEATED FITNESS CLASS

at Longwell Green Community Centre, perfect for beginners, older adults and anyone needing gentle, low-impact exercise. Thursday 9:15-9:45am, first class free. Contact Sarah today to book your free trial class. on 07975 943589 or sarah@realfitnesswithsarah.com

BLACK SHEEP HARMONY

We welcome new singers to any of our weekly rehearsals, to join in or just to listen. 7:30pm on Thursdays in Hanham Community Centre. Contact Noey: 07899 088180 or check out our website www.blacksheepharmony.com

WALKING NETBALL

Broadlands School, Keynsham, 7pm -8pm £5 per session, ex players or new to netball welcome, for more info email линдab2023@gmail.com

'STAND UP REACH OUT'

A social group meet every Thursday 2-4pm at Longwell Green Community Centre for different activities.

FRIDAY

LONGWELL GREEN WI meet on the third Friday of the month at 7.30pm at Longwell Green Community Centre. New members are always welcome. Email longwell-wi@gmail.com or tel. 0117 9864782.

TAI CHI FOR PARKINSON'S:

Weekly beginners Tai Chi & Qi Gong class for people with Parkinson's disease, their families and carers. Lincombe Barn, Downend. BS16 2RW. Fridays (term times) 10.15 – 12.15 including tea / coffee break. Contact: Claire - Claire@Taichibodyandmind.co.uk (07769 857672) or Sarah - buqiworks@gmail.com (07815 662844)

LONGWELL GREEN COMMUNITY CENTRE QUIZ NIGHT

meets normally first Friday of each month at 8 pm. Bar available. For details please contact Marian.rsummerill@gmail.com, or ring 07503 989880.

CROFT END SILVER BAND

Hanham Tabernacle, Tabernacle Road, practice 7.15pm - 8.45pm. Players needed on all sections, all ages welcome and training given. We are a happy Band with a good atmosphere. More details contact Rob (Chairman) on 07788 473404

■ PHARMACY COLUMN

Colleagues and customers help us turn challenges into success stories

As we approach the end of 2025, December often feels like a whirlwind of deadlines and tasks to tackle. I hope that as you read this blog, you find a moment of calm amidst the chaos.

First and foremost, We want to extend a heartfelt thank you to our wonderful community for your unwavering support of Ellacombe Pharmacy and the NHS over the past year.

It remains an incredible privilege to be part of your healthcare journey, and we take that responsibility to heart. As we reflect on this time of year, we also remember those we have lost. Their memory remains in our hearts.

This year has presented its challenges—medicine shortages, and seasonal

pressures (which felt like a year-long season!) and another every well attended vaccination programme.

As we reflect on the year, for our very diverse Ellacombe Pharmacy team has also been impacted this year by local and national campaigns, sparking broader conversations about identity and belonging.

Each hurdle brought its own set of complexities, but what truly made the difference as we navigated these challenges was you. Your patience during our busiest moments, your kindness when things didn't go as planned, and your humour and trust in us to provide care and support mean the world to us.

We also acknowledge a failure. While colleagues have

celebrated milestone achievement's like Ade's Honorary Doctorate from the University of Portsmouth. We have not been able to improve our pharmacy team's work-life balance as much as hoped. While we faced longer hours and shorter breaks, the fulfilment we find in our work has been immense.

Our affordable weight-loss treatment offer, travel health vaccinations, the ever popular NHS Pharmacy First treatment service all continues to provide accessible and convenient care.

Looking ahead, our mission remains steadfast: to do our best for our community while enhancing the NHS offerings with equity and excellence.



0117 932 2293
24 Ellacombe Road,
Longwell Green, BS30 9BA

If there's anything we can improve, please don't hesitate to let us know. If we've fallen short in any way, we want to apologise, make it right for you and improve.

Thank you for allowing us to be an integral part of your journey. Here's to a bright and healthy new year ahead,

LOOKING TO LOSE WEIGHT?

**WE OFFER SUPER AFFORDABLE
WEIGHT LOSS CARE**

**WE ALSO NOW PRESCRIBE
NHS-APPROVED WEIGHT LOSS
TREATMENT**

**Pop in to Ellacombe Pharmacy and talk
support, plans, costs and expectation**

Ellacombe Pharmacy

24 Ellacombe Road, Bristol BS30 9BA

Tel no: 0117 932 2293

Find out more on:

www.bristolweightlossclinic.co.uk

**Provided by NHS professionals
in your local pharmacy**

SCAN ME



■ NEWS

Recycle your tree

ST Peter's Hospice has announced that its popular Christmas tree collection service will return for another year this festive season, with even more households now able to benefit.

The hassle-free service offers residents across Bristol and North Somerset a convenient and eco-friendly way to dispose of their real trees, while helping to raise necessary funds for the city's only adult hospice.

From 9-11 January, volunteers will be collecting trees directly from doorsteps across Bristol, South Gloucestershire, Pill, Clevedon, Portishead, Long Ashton, Nailsea, and Backwell. BS6, BS8 and BS11 postcodes have been added this year, while BS3 was a new postcode last year.

In return, residents are asked to make a suggested donation of £20-£25 per tree, with every penny helping St Peter's Hospice continue supporting patients and their families as they deal with serious illness and bereavement.

Caitlin Logan, events fundraising manager at St Peter's Hospice, said: "Last year, our amazing supporters helped us raise £20,000 through the Christmas tree collection and we collected over 1000 trees from doorsteps across the area. This year, we hope to raise even more."

The trees collected will be recycled sustainably, turned into wood chippings to be used as mulch at local allotments, used as enrichment for animals at Noah's Ark Zoo Farm, or converted into energy via a biomass boiler at Blaise Plant Nursery.

Taking part is simple: sign up online using your postcode, leave your tree outside your home on 9 January, and St Peter's Hospice will handle the rest. All trees will be collected by the end of the day on 11 January.

For more information visit St Peter's Hospice - Christmas Tree Collection

■ ANTIQUES

Consider auction gifts

As we count down to the big day, I know the familiar dread of the high street, or, in my case, the endless, glassy-eyed scrolling through online marketplaces, is setting in for many of you. But I'm going to let you in on a secret; the best gifts aren't always found in a warehouse; they can be won on the rostrum!

Buying from auction is the ultimate antidote to the 'Amazon experience.' When you buy from a saleroom, you aren't just purchasing an object; you are acquiring a story, a piece of history, or something special. Whether it's a piece of Georgian silver, a vintage toy that sparks some childhood nostalgia, or a quirky mid-century lamp, you are giving something entirely unique. It shows a level of thoughtfulness that "click-to-buy" simply cannot replicate. You've hunted for this item, you've fought for it, and you've won it.

Beyond the romance of the antique, there is the vital practical benefit: it is green. Buying at auction is the purest form of recycling. There is no new carbon footprint attached to a Victorian chair or a pre-loved designer handbag. By choosing vintage, you are extending an item's life and stepping away from the throwaway culture. No packaging, no plastic wrap, no additional work for your binman!

Finally, there is the experience itself. We welcome everyone at our saleroom on auction day, from seasoned dealers to complete novices. The atmosphere of a live auction is electric, the finds are eclectic, and there are items for every budget.

So this year, put down the mouse and pick up a paddle. Come and find a gift that actually means something.

Wishing you a very Merry Christmas,

Andy Stowe, Auctioneum




AUCTIONEUM
 BRISTOL & BATH AUCTIONEERS
 FORMERLY EAST BRISTOL AUCTIONS LTD

T: 0117 967 1000
E: info@auctioneum.co.uk
www.auctioneum.co.uk

Auctioneum, 1 Hanham Business Park,
 Memorial Road, Hanham, Bristol BS15 3JE

■ KINGSWOOD HISTORY SOCIETY

Vice and Virtue – Old Market through the Ages by Michael Manson – 4th November 2025

Mike gave an enlightening chronological step through the history of the market from 1568, highlighted with many maps. Initially showing how the market was the main thoroughfare into Bristol Castle from Kingswood and further afield London.

A map of 1673 shows Lawfords gate close to the junction with Midland Road, this was used to close the city each evening. By 1828 it had gone.

Streets coming off Old Market had such names as Whipping Cat Hill (now Midland Road) and Dead Horse Lane (now Waterloo Road) relating to an abattoir.

In the 1880s horse drawn trams could be found in the market and a railway station in Midland Road. The Palace Hotel (Gin Palace) partially built came about due to the station.

1895 saw the introduction of electric trams. By 1901 the Market had 8 pubs, 1 Temperance Hall and the Jacob Street brewery. The Drill Hall was built for the 4th Battalion Gloucesters.

Cinemas; Empire 1892 (originally a music hall), The Kings 1911 with The Tatler down a side street.

The 1930s saw many disturbances and in WW2 American GIs would be involved, mainly due to segregation. Old Market escaped much of the Bristol bombing during the war. The bombing ultimately led to the rebuilding of central Bristol and Broadmead took over commercially from Old Market. 1967 saw approximately a third of the market removed due to the new dual carriageway.

To finish, the audience were keen to add their memories, particularly The Ancient Court of the Pie Poudre (dusty foot) held in the Stag and Hounds.

Next meeting at the Park Centre, Kingswood is Tuesday 2nd December, 7pm for 7.30pm start. Visitors £4 incl tea/coffee and biscuits.

Full schedule of presentations can be found at www.kingswoodhistorysociety.org



Longwell Green Community
 Centre, Shellards Road
 Longwell Green BS30 9DU
 Monday: 6.00pm & 7.30pm
 Tuesday: 9.30am
 Tel: Karen 07889 408969

AEK Boco FC,
 Greenbank Road,
 Hanham BS15 3RZ
 Thursday: 9.15am, 11.00am
 3.45, 5.15 & 7.00pm
 Friday: 9.00am
 Tel: Kate 07979 494964

Hanham Community Centre.
 118-124 High Street.
 Hanham BS15 3EJ.
 Saturday: 9.00am
 Tel: Izzy 07581 715665

North Common Village Hall,
 16 Millers Dr, North Common
 BS30 8XX
 Tuesday: 6pm & 7.30pm
 Tel: Emma 07773 689229


 touching hearts, changing lives

■ COMMUNITY NEWS

LONGWELL GREEN WI

THE WI would like to report that our President has tracked down the disappearance of the post-box topper (below) outside the local Tesco Express, which marked the 50th anniversary of the Avon Federation of Women's Institutes.

In future, these creative and colourful toppers will not be seen, and will be missed, as the post boxes are being revamped to have a solar panel on the top. The new location of the topper will be on the post-box inside Asda Longwell Green.



Our WI members had a creative activity hosted by two of our committee members, Jess and Jenna. Members were asked to split into groups and had ten minutes to design an outfit and twenty minutes to create it out of newspaper – akin to the transformation activity in the Sewing Bee. A model from each group had to wear it along with a narrator to talk about the outfit. Seven outfits were created which included a Dutch and a Hawaiian outfit, whilst some had unknown origins – a case of make it up as you go along! The winner was the Scottish garment, which received the loudest applause.

A Craft Fair was held at the local Community Centre where members chose to create one or two crafts from those on offer, these included a painted tote bag, cards, a clock and decorating a chocolate log.

Members generously brought in a variety of donations including toys and toiletries for the annual Christmas Tree Appeal which are to be distributed to various women's refuges in the Southwest, including for mothers and children of domestic abuse.

Knitted donations of scarfs, hats and hand warmers were also given

to the Juice Community project for the elderly.

It is with sadness that Sandra, who has been our President of the local WI, is stepping down after three years. Gifts and cheers were given to thank her for her hard work.

We have lots of groups that our members can participate in. There are book clubs, walking groups, knitting group, skittles and social suppers. On the first Thursday of the month, we meet at The Chapel Coffee Shop in Longwell Green for Tea and Chat.

The Longwell Green WI's monthly meetings are held on the third Friday of the month at 7.30 pm at the Longwell Green Community Centre and new members are always welcome. If you are interested in visiting, please get in touch by email at longwellwi@gmail.com, telephone 0117 9864782 or come along on the meeting evening. We shall look forward to meeting you.

Kamann Huang

BITTON WI

NOVEMBER, as always is our Annual General Meeting month, though we do still have a catch up on our WI news for members.

It seems our Postbox topper was a huge success and we are still receiving lovely comments from villagers and the Parish Council. It is still sitting proudly on our postbox in Bitton Village despite the bad weather we've had since putting it up. Our Crafting Group are already working on a Christmas themed topper so please keep an eye out for that this month.

WI Events and outings are few at this time of year though we are looking forward to our Christmas Lunch and the Christmas Carol Services this month. At our December meeting we will also be enjoying having another go at make a festive table decoration and of course, I'll be leading a festive singalong if we have time.

I am really honoured to have been re-elected President for another year, ably supported by our amazing Committee. A well deserved huge thank you goes to our Committee for the hard work they each put in every month to make our meetings interesting and enjoyable. Without them,

these meetings just wouldn't happen. I am truly grateful for the support and guidance they have given me in my role. In fact, a big thank you to all our members for their company, support and patience over the past year. Our bakers and crafters have done us proud meaning we were also able to support the community at events, as well as put a smile on someone's face. I'm looking forward to another great year of meetings, speakers, crafting and baking!

Our eagerly anticipated "Surprise" session followed the AGM business. Our Secretary, Ros, had been tasked with purchasing Christmas Cake, Stollen and Mince pies from three well known retailers. Who these were had been a closely guarded secret until after the voting had taken place. Members were asked to sample a small taster of each of the items from retailer A, B or C – In all nine samples of cake and stollen to get through. Once all the samples had been eaten and the scores given, Ros revealed who the retailers were. Each of the retailers won a round, so no

clear winner on all three. I think we were all surprised that prices from the perceived "premium" supermarket and the mid-range supermarket were quite similar. An enjoyable though filling session to put us all in the mood for Christmas I'm sure!

Our next meeting will take place on Monday 8 December, Church Hall, Bitton at 2 pm. Do come along and join us if you would like to see what we do and who we are or if you are thinking of joining. Guests are welcome at £4 per meeting. Please let us know if you intend to come to this meeting to ensure we have enough crafting materials for all. Email me at bittonwi@gmail.com.

Karen Davidson, President

theWI
INSPIRING WOMEN

LOOKING FOR LEGAL ADVICE?

We offer you friendly, professional expert advice

Your **LOCAL** Solicitors offer you friendly professional expert advice

FLEXIBLE TIMES FOR APPOINTMENTS

- Family Law - Divorce & Separation
- Child matters
- Employment Law
- Litigation & Legal Disputes

FREE 30 MINUTE INITIAL MEETING

CONTACT US TODAY

0333 320 8600

www.bevanevemy.co.uk



Bevan Evemy
Solicitors

Meet the team

Tina
Bennett

Lynn
Bevan

SEND US YOUR GROUP'S REPORT
news@hanhamandlongwellgreenvoice.co.uk

NEWS

SERVICES for children with special educational needs and disabilities in South Gloucestershire must be improved, inspectors say.

A joint team from education regulator Ofsted and the Care Quality Commission inspected the South Gloucestershire Local Area Partnership, made up of the council and the region's NHS integrated care board, in July.

In their report, published in November, the inspectors said the partnership needs to make improvements and update its strategic plan.

They said children and young people had "inconsistent experiences and outcomes".

The report said: "Younger children with SEND and their families have typically positive experiences in the early years. Strong and established relationships between early years practitioners, education inclusion officers and health visitors help to ensure that children's needs are identified and met early.

"However, despite improvements in several

Special educational needs services need improvement

areas, including a reduction in suspensions and exclusions, variability in the system is more frequent once children reach school age. Experiences and outcomes are particularly mixed for children and young people receiving SEN support and for those identified as having social, emotional or mental health needs."

The inspectors said there were "unacceptably long waiting times" for children with neurodevelopmental conditions such as autism and ADHD.

Less effective joint working meant that in some areas children had unidentified needs, which meant they could not be properly helped.

They said there were some improvements in experiences and outcomes for children, thanks to new organisational

strategies, better partnership working and the support of the area's parent carer forum.

The inspectors made a series of recommendations across five areas, including improving engagement with children and young people with SEND and their families.

Responding on behalf of the partnership, a council spokesperson said: "The report recognises that a lot of the work we do with families and young people is effective and valued."

The spokesperson said: "Waiting times for key therapies and mental health services have been significantly reduced, and most children with SEND are now educated close to home.

"These improvements, driven by strong partnership working, are accelerating early identification and delivering

positive experiences and outcomes, particularly for families new to the system.

"That said, we know we need to do significantly better to improve consistency in the way that support is provided, especially for those who are waiting on the neurodevelopmental pathway and for those young people with Social, Emotional, and Mental Health (SEMH) needs.

"We fully accept the report findings. The areas identified by inspectors for improvement were in our existing plans and we will redouble our efforts to drive the improvement work already under way. We are putting in place additional detail to our plans, and making sure that these are overseen at the highest level, to ensure we have the right support to make rapid progress."

Loft Boarding & Insulation



www.useyourloftspace.co.uk

USE YOUR LOFT SPACE

is the reliable, affordable and trusted local company for all your loft boarding, and loft insulation requirements



0117 2980810

USE YOUR
LOFT SPACE

INFO@USEYOURLOFTSPACE.CO.UK

24 HOUR LOCKSMITH & DOUBLE GLAZING REPAIRS

Dale Clements

24 hour Locksmith Service (all types of doors)

Locks, Handles and Hinges Repaired

Misted and Broken Glass Replaced

Realign Dropped Doors and Windows

0117 3690046

Mobile: 07970 019830



www.daleclements.co.uk

44 ABBOTS ROAD, HANHAM, BS15 3NG

TRADING
FOR OVER
10 YEARS

KINGSWOOD MEMORIES & HERITAGE MUSEUM



CHRISTMAS IN WARMLEY AND SISTON

Christmas is fast approaching, and as usual at this time of year we feature photographs illustrating scenes from Christmases past.

The two photographs this year show scenes from both Warmley and Siston. The first (above), from 1959, shows children of Warmley Church of England school in fancy dress, and includes one of our own curators, Alan Bryant!

The second photograph (below), courtesy of the Brian Haynes collection and of unknown date, features children at St Annes Church, Siston, dressed for the Nativity.

If you would like to share your memories of these events, please let Kingswood Heritage Museum know by email at kingswoodmuseum@gmail.com, or by phone on 0117 9605664.

Kingswood Heritage Museum wishes a "Merry Christmas" to all its visitors and supporters, and to all readers of the Voice.



End of the season

Kingswood Heritage Museum closed for its annual winter break on Sunday 30th November, and will reopen for the new season in April next year.

Whilst the Museum is closed volunteers will be working hard to prepare next year's exhibitions, which will include a photographic display illustrating the changes that have taken place at the Museum over its first thirty years.

Three further new exhibitions will include:

- A presentation of the Regalia and many other items owned by the late David Fry, Kingswood's very own Town Crier
- A feature on schools from Kingswood and across the broader area and
- A spotlight on the history of Soundwell and Staple Hill

A special exhibition later in the year will feature the Quazar Motor Cycle, which was built in Morley Road, Staple Hill.

Museum Talk: Christmas Toy Memories

This month's talk takes place at Kingswood Heritage Museum on Monday December 1st, when Dave Cheesley will explore "Christmas Toy Memories".

Admission costs £4.50, including tea or coffee; doors open at 7pm and the talk commences at 7.30 pm; Seats must be booked in advance via 0117 9605664, or by email: kingswoodmuseum@gmail.com.

Candle Making Workshop

On Sunday 7th December (10.30 am to 12.30 pm), join The Bee Lady, Alyson Hurst, for a festive Candle Making Workshop. Alyson will share her knowledge of bees and their vital role in the environment before guiding participants through rolling and shaping beeswax sheets into beautiful candles. Enjoy unlimited tea and coffee with mince pie treats as you craft your own Christmas gifts. Tickets are £25 and available on Eventbrite.

Volunteer with us

Kingswood Heritage Museum is run entirely by volunteers. Would you like to help us to conserve and display the history of our area, and to pass our knowledge on to future generations?

Whatever skills you can offer, Kingswood Heritage Museum would like to hear from you. If you would like to join our enthusiastic and friendly group of volunteers do get in touch by emailing us at kingswoodmuseum@gmail.com, or simply call us on 0117 9605664. We would love to hear from you!

■ BITTON PARISH HISTORY GROUP

Local historian David Noble publishes landmark two-volume history of Bitton parish industries

DAVID Noble, a well-known local historian, has released a remarkable two-volume book exploring the rich industrial heritage covering the parish of Bitton. Packed with photographs and first-hand recollections, the collection captures the stories of the people who worked in the varied industries of Bitton, North Common, Oldland Common, Swineford, Willsbridge and Upton Cheyney.

Well known throughout the locality, David



was born in Oldland Common in 1943 and has spent decades gathering a vast archive of images and memories. Much of this material comes from friends, family, schoolmates from his years at three local schools, colleagues from his 41-year career at Fry's/ Cadbury's, and teammates from local football and cricket clubs. His deep roots in the community have allowed him to preserve "within living memory" a wealth of stories that may otherwise have been lost.

About the book

The new publication is presented in two volumes.

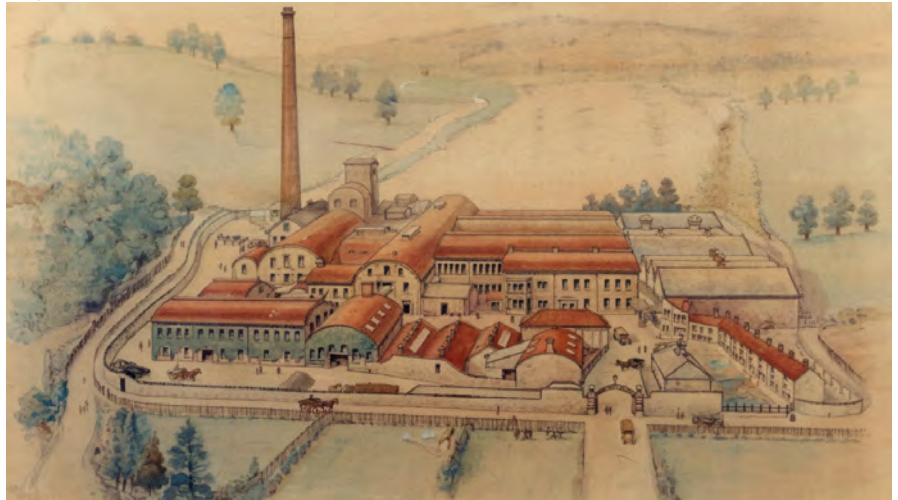
- **Volume One:** Industries of Bitton, Swineford and Upton Cheyney/Beach
- **Volume Two:** Industries of Oldland Common, North Common and Willsbridge

Launch Events

The books will be available at two local launch events at £14 per volume:

- **8 December, 2:00 – 4:30pm** – Kingswood Heritage Museum, Tower Lane, Warmley, BS30 8XT
- **16 December, 7:00–7:30pm** – Bitton Parish History Group meeting, High Street, Oldland Common, Bristol, BS30 9QN

After these events, copies can be purchased directly from David Noble at:



Golden Valley Paper Mills Bitton; circa 1906 painting by Muriel King-Smith



Employees of Chas. Bayer Corset Factory - 1920s, High Street, Oldland Common

1 Salthouse Farm Park, Shaft Rd., Severn Beach, BS35 4NH
To arrange collection, please call **01454 633888**.

A lifelong commitment to local history

David is the author of four previous books as well as a DVD and stage productions. He is known for his generosity in sharing the materials from his extensive archive, and this latest project highlights his dedication to preserving the everyday histories of local people and places.

The book traces the evolution of the local industries - from brass making, hat making, boot making and coal mining to later factories producing paper and automotive components. Many of these once-thriving workplaces have disappeared, but the memories of the camaraderie and community they fostered

remain vivid. Thanks to David's work, and the contributions of many who shared their experiences, these stories will now be preserved for future generations.

David, along with all who contributed their memories, has created an invaluable record of the area's industrial heritage, ensuring that the sense of community, purpose and belonging that defined local working life over the past 70 years will not be forgotten.

Next Meeting

The next Meeting of the History Group: 16th December, Jane Austen and the Engineers: Bath at work during the Regency period a talk by Stuart Burroughs.

Venue: Oldland Common Tabernacle United Reformed Church, High Street, Oldland Common, BS30 9QN

Everyone is welcome: there is no charge for entry.
www.bittonhistory.co.uk

SPORT

Members honoured

NOW that the outdoor bowling season has finished, many members of Keynsham Bowling Club are playing indoors, on rinks at Bristol, Chippenham and Paulton.

On the social side, we have our regular coffee mornings in the Clubhouse on the first Wednesday of the month, and our annual presentation lunch took place at Saltford Golf Club, attended by over 70 members.

The president and vice president, John Nix and Margaret Church, presented over 25 trophies to the winners of competitions that took place throughout the season.

Later in the month we held our annual general meeting in the clubhouse, at which members stood in silence in memory of those who had passed away in the previous 12 months.

For the 2026 season, our president and vice president were re-elected, along with Steve



Bob Edge, left, and Ian Tweedie, right, with the life membership certificates presented by chair Steve Coles, centre

Coles as chair, David Hockney as secretary and Don Weston as treasurer.

Tony Hunter stood down after many years as the men's fixture secretary, to be replaced by Andy Abrahams.

Lynne Pearce was re-elected as ladies' captain, while Bob Edge became the men's captain in a non-playing capacity due to health reasons.

Geoff Yorath was re-elected captain of the men's A team, with Beresford Parker becoming



Keynsham Bowling Club members receiving their trophies at the annual presentation lunch

the B team captain, Dave Jay the Thursday C team captain and Mike Barrow the triples captain.

Chair Steve Coles presented life membership awards to long-serving members Bob Edge and Ian Tweedie.

Bob, a member for about 40 years, has served as club captain a number of times, as well as representing the club at county level. He is a great encourager of new bowlers, particularly by bringing them into the Somerset Mixed County League on a Friday,

which he captains.

Ian's roles over the years have included men's captain, club secretary and club chairman. As a qualified coach who organises the weekly coaching sessions, Ian is also important to new members.

For a number of years, he organised the men's tour at the end of the season, plus trips to Cyprus at the start of the year. He has bought smiles to people's faces at social events with his impersonation of the Cornish comedian Jethro.

WE CARE LIKE FAMILY



Quarry House
FISHPONDS

- ✓ Inhouse physiotherapy team
- ✓ Continuous décor upgrades
- ✓ Automated care plans
- ✓ 24/7 On-site nursing support
- ✓ Adapted wheelchair car
- ✓ Idyllic gardens & grounds
- ✓ Amazing activities plan



Bristol Care Homes
Providing top quality, best value, holistic care

Come And See US : 0117 965 4466

CQC rating

Good

SPORT

Frys Bowls Club celebrates an excellent year

2025 was an excellent year for Frys Bowls Club not only on the green where we won the Bristol and District League Division 3 title and the Triples League Cup, but also in moving the club forward by running a number of events both for the community and our own members.

In April we had an open day to celebrate the renovation of the outside of the club, where we entertained numbers of dignitaries including the Chief Executive of St. Monica Trust and his team as well as Local Councillors, members of Somerset Bowls committee and our local friends "The Unstoppables".

In early May we put on an event for the Tenant farmers of St. Monica Trust, which the farmers really enjoyed.

Throughout the year the club has put on events for members including the annual BBQ, where we had the Oldland Ukulele Club band, which bowls club members Don Goud and Geoff Kershaw are a part of, and also featured our own Stephen Day sitting in on the bass guitar. The band went down very well along with the two race nights which are always popular.

The Club entertained "The Unstoppables" in the summer where all enjoyed themselves.

The Club has also had some excellent singers at the club in Chris and Victoria who both went down well with the members with some enthusiastic sing-alongs. The Christmas coffee morning is planned for the December.

Thanks for all these events go to the Social Committee and other Club members who have worked hard to put on the events.

The Club through the Green team have also had a good year maintaining the Green where we have one of the best greens in the local area and for the first time since 2018, the club entered the Keynsham in Bloom competition. Congratulations to the Garden team who won a Silver Gilt award.

Along with the league match on Thursdays and Fridays, the club played



Oldland Ukulele Club band

a large number of mixed friendly matches on Wednesday afternoons, weekends and the ladies on a Tuesday and Thursday. The weekend friendlies saw Fry's win 12 matches, draw 2 with 5 losses. The Wednesday's saw 10 wins and 10 losses, but a shots difference of +70. The ladies team continued their progression. They won over 50% of matches putting out full teams each game. Thank you to those who organised the matches this year.

Plans are now under way for next year. There will be a delay in events in January and February as the club is being decorated. Our thanks to St. Monica Trust.

We wish all members and friends of the club a happy and peaceful Christmas.

OFFER OF THE MONTH

5 DOORS FITTED IN
YOUR HOME FOR ONLY **£579**

Any 5 white primed 'suffolk' or 'colonial'
doors complete with a choice of 7 different
handles, hinges and latch. Fitted to your home.

DOOR EXPRESS
08000 973333 • 07767 376770

A PHONE CALL WILL SECURE
YOUR ORDER FITTING DATE

Offer applies to door
sizes 78" x 30" & 78" x 27"

Colonial

Suffolk

www.doorexpresssouthwest.co.uk

Swimming Lessons

Spaces available at
**Hengrove Park
Leisure Centre**

0117 937 0200

Hengrove Promenade, BS14 0DE

LeisureCentre.com

Following the
**Swim
England**

Learn to Swim
Programme

Water
Safety
Partner
of RLSS UK
OFFICIAL PARTNERSHIP

BRISTOL
CITY COUNCIL

LEXLEISURE
Lex Leisure
working in partnership
with Bristol City Council

Scan here for more
information



Spectrum
Accountancy Solutions
**Are your company's finances
keeping you up at night?**

- Payroll ● VAT ● Bookkeeping ● Tax

Come and see us at our new, local office
on Staple Hill High Street to see how
we can support your business.

Call or come in to book your initial free consultation
(0117) 990 2218
18 Broad Street, Staple Hill, Bristol BS16 5NX
hello@spectrum-accountancy.co.uk www.spectrum-accountancy.co.uk

LOCAL SERVICES



APPLIANCE REPAIRS

FOR ALL YOUR DOMESTIC APPLIANCE NEEDS:

Reliable Repairs

Tel: 0117 986 2500

0755 395 0744

ALL MAKES & MODELS

BUILDING SERVICES

TRADSTONE
CONSTRUCTION

TRADITIONAL BUILDERS

- Property Maintenance
- General Building & Alterations
- Walling / Patios
- Roofing
- Carpentry

FREE QUOTATIONS

Email: tradstoneconstruction@yahoo.co.uk

Tel: 01225 872243 / 07557 505174

AERIAL INSTALLER

WEBB SYSTEMS



webbsystinfo@virginmedia.com
http://webb-systems.co.uk

TV/FM/DAB & Satellite Systems supplied and installed
CCTV and data points
TV wall mounting
Wi-fi repeater installations
Solar Panel Bird Mesh installation
Domestic & Commercial clients welcome
FREE QUOTATIONS - SAME DAY CALLOUT

Telephone: 0117 427 1216
07867554777

BATHROOMS

PDay Plumbing Services

Bathroom Refurb Specialists

www.pdayplumbingservices.co.uk

info@pdayplumbingservices.co.uk



Call Peter

- Friendly
- Reliable
- Affordable
- Est 2008



07793 746958

CLEANING SERVICES

ABLE

CLEANING LIMITED

7 Days - Call for a free quotation

- For the best in carpet cleaning
 - Fully Prochem trained
 - All work insured • Based in Keynsham
- Always here when you need us

Checkatrade

Tel: 07760 320942

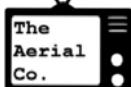
www.ablecleaningltd.com

AERIAL SPECIALIST

The Aerial Co.

Est. 2004

- TV Aerials & Satellites
- Extra Points • Repairs
- Sky Work Undertaken
- Telephone Extensions • TV Wall Mounting
- CCTV • Data Points & Wi-Fi Extensions
- TV/DAB/FM Multi Point Systems
- Solar Panel Bird Meshing Supplied & Installed



Call Nick on 07970 529787
Email: theaerialco@yahoo.com

BATHROOMS

Bespoke Bathrooms & Plumbing

Competitive pricing & free quotations

07790 950351

Bespokebathrooms@hotmail.com

COMPUTER REPAIRS

TECHNIC 07564-745591
COMPUTER & E-BIKE BATTERY REPAIR TECH-NIC.CO.UK

COMPUTER REPAIR

- Virus Removal & Prevention
- PC Speed-Up & Renewal
- Upgrades (RAM, SSD, etc.)
- Physical Repairs (screen, keyboard, etc.)

E-BIKE BATTERY REPAIR

- Save Batteries, Save Money
- Simple Repairs to Complete Rebuilds
- Full Testing & Balancing Suite

AERIAL SPECIALIST

THE AERIAL MAN

TV Aerial and Satellite Specialist

Poor Reception Problems Solved
OAP Discount Digital Aerials Satellites

Two Year Guarantee Free Quote

CCTV & Ring Doorbells



Affordable Prices - Reliable Service

0117 967 9028

www.theaerialman.co.uk | info@theaerialman.co.uk

hanham&longwellgreenvoice

LOCAL SERVICES

To advertise, contact Emma on
0117 9082121 or 07715 770448
or email sales@
hanhamandlongwellgreenvoice.co.uk

DRIVEWAYS

AGL DRIVEWAYS

Tarmac, Resin & Block Paving

- A wide range of colours & patterns
- Local Saltford family run business for 70 years
- All work guaranteed • Free estimates
- Pressure washing Driveways & Patios

**Tel: 01225 873587
or 07831 453821**

www.agldrives.co.uk

ELECTRICAL SERVICES

STEWART REDWOOD

RELIABLE & LOCALLY TRUSTED ELECTRICIAN

- CONSUMER UNIT UPGRADES
- FULL / PARTIAL HOUSE RE-WIRES
- EXTRA SOCKETS & LIGHTING
- COOKER CONNECTIONS
- TESTING & INSPECTION
- OVER 30 YEARS EXPERIENCE

Contact **Stewart** on 07815 141442
e: stewart70redwood@gmail.com



ELECTRICAL SERVICES

Elderwood Electrical

Electrical Installation, Maintenance and Testing

Free Quotes

Inspection and Testing

Landlord Certificates

New builds and Extensions

Extra Sockets and Lights

Fire Alarms, Smoke Detectors

www.ElderwoodElectrical.com

Office - 0117 9322379

Mobile - 07725 058581



ELECTRICAL SERVICES

A.R.J. Electricalwww.arjelectrical.co.uk

Andy Le Huray

07768 654 344

0117 9860 590

mail@arjelectrical.co.uk

- Sockets/Lights
- Full Rewires • Showers
- Heating controls • PAT Testing
- Inspection, Testing & Safety checks



Keep It Local

ELECTRICAL SERVICES

Electricianwww.alliedelectrical.co.uk

Do you find it difficult to get someone to come and do a small job?

- Extra lights • Additional sockets.
- Replacement fuseboards • Rewires
- Landlord & homebuyers inspections.

Call Nick on 0117 2872375

I will assure you of a quick response and a reasonably priced service



hanham&longwellgreenvoice

LOCAL SERVICES

To advertise, contact Emma on
0117 9082121 or 07715 770448
or email sales@hanhamandlongwellgreenvoice.co.uk

GARDEN SERVICES

Hanham Gardening Company
Full garden maintenance
One off garden tidy
Lawn mowing
Bush trimming • Tree works
Weeding • Borders • Fencing
All work fully insured
07889 041 888
www.hanhamgardeningcompany.co.uk

GARDEN SERVICES

Harvey's Waste & Garden Services

We load and clear unwanted waste ...
cheap and fast. House clearances to
single items. Garages & sheds cleared.

PLUS

Tree trimming, fencing, hedge and grass cutting

07956 548756

NO JOB TOO BIG OR SMALL

harveyswgs@outlook.com any time to book

GARDEN SERVICES

PARK VIEW TURF & GARDEN SERVICES

(over 20 years experience)

- Quality Turf Supplies
- Regular Maintenance
- (Commercial & domestic contracts)
- Turfing • Grass & Hedge Cutting
- Garden Clearance

For a FREE estimate, call Roger
07799 373287

roger67west@gmail.com

GARDEN SERVICES

WOODSMAN TREE CARE

Specialist in all aspects of Tree Surgery

Fully NPTC qualified & insured

07706 855 673info@woodsmantreecare.co.ukwww.woodsmantreecare.co.uk

GARDEN SERVICES

All areas covered
Keynsham Tree Removal & Stump Grinding

- Tree felling • Stump grinding • Fencing
- All tree & hedge work undertaken
- Fencing • Waste removal • Garden dig outs
- Mini Digger & Operator • Micro Digger & dumper (tight access no problem)
- Good rates & reliable service

Tel: **0117 9861652**Mobile: **07747 131431**

GARDEN SERVICES

D ATTWELL & SONS LANDSCAPING

Whether you're looking for
new patios, garden fencing,
new decking installations, or turf laying
our landscapers are here to help



Call now for a free quote
07960 681921

www.dattwellandsonslandscaping.co.uk

HOUSE & RUBBISH CLEARANCE



**HOUSE CLEARANCE
GARAGE CLEARANCE
GARDEN CLEARANCE
GENERAL RUBBISH CLEARANCE**

FULLY LICENSED AND INSURED

MINIMUM COLLECTION FROM £59 INC VAT - FREE QUOTATIONS

Visit us: www.junkmonsters.co.ukEmail us: info@junkmonsters.co.uk

Call us: 07592 506 003

KITCHEN SPECIALISTS

M J CRAWFORD
CARPENTRY & KITCHEN
FITTING LTD

Your local carpenter who carries out
all types of carpentry work .

- Kitchens • Bathrooms
- Doors • Skirting • Flooring
- Decking • Pvc cladding

Call Matt on 07909 928413
or 01179 864304 for a free quote

E: mjcrawfordcarpentrykitchen@yahoo.com
W: www.mjcrawfordcarpentry.co.uk

OVEN CLEANING

We Clean Ovens

...so you don't have to

"Dave did a wonderful job today - not only does he leave everything looking like new, but he works quietly and efficiently and leaves things tidy - a real professional. Worth every penny!"



Call Dave on
0117 2872467

ovenu.co.uk/oven_cleaning/bristol-east

PAINTING DECORATING

Steve & Charlotte
Rioch

Painting & Decorating Specialist

- No Job To Small ● No VAT
- Interior & Exterior Decorating
- Free Quotation
- 40 Years Experience

For A Free Quotation

Call Steve On

07943 537798

stevenrioch@gmail.com

KITCHEN SPECIALISTS

**CBCarpentry**

Reliable, Local Carpenter & Kitchen Fitter
30 years experience
City & Guilds approved

- Kitchen & Worktops • Doors
 - Skirting • Handrails & Spindles
 - Wood & Laminate Flooring • Decking
- All types of Carpentry

Call: Colin 07977 997557

Email: colinrb22@gmail.com



CBCarpentry

PAINTING DECORATING



Renovation ■ Painter ■ Tiler ■ Decorator

- Interior & Exterior Masonry ■ Tiling
- Interior & Facade Painting
- No Job Too Small ■ Free Quote
- 17 Years Experience

T: 0117 382 7716 / 07557 335 956

E: dacriscobuilder9@gmail.com



PAINTING DECORATING

STUART DANIELS
Painter & Decorator

Est 1982

City & Guilds Qualified - Local Decorator
Internal & External Decorating
Wallpapering

Fully Insured - No VAT

07738 549581

Email: sharyn.daniels@btinternet.com

PLASTERING SERVICES

Fine Finish
Plastering & Building
JAMES BATRAM City & Guilds
07842 528804
finefinish1983

hanham&longwellgreenvoice

LOCAL
SERVICES

To advertise, contact Emma on
0117 9082121 or 07715 770448
or email sales@

hanhamandlongwellgreenvoice.co.uk

LOCKSMITH

24 HOUR LOCKSMITH
& DOUBLE GLAZING REPAIRS

Dale Clements

24 hour Locksmith Service (all types of doors)
Locks, Handles and Hinges Repaired
Misted and Broken Glass Replaced
Realign Dropped Doors and Windows

www.daleclements.co.uk

0117 3690046

Mobile: 07970 019830



NO CALL OUT FEE
Fixed prices

PAINTING DECORATING

SJM DECORATING

Professional Decorating
Local Qualified tradesmen
Internal & External Decorating
Fast, reliable & friendly service
Fully insured

Free Quotations

Call Scott 07515 523 623

0117 3824411

www.sjmdecorating.freeindex.co.uk

PLUMBING & HEATING

BOILER INSTALLATION,
SERVICING & REPAIRS

OUR FRIENDLY TEAM OF GAS
SAFE ENGINEERS ARE READY
TO HELP WITH INSTALLATIONS,
REPAIRS & MAINTENANCE.



AR HEATING SERVICES

0117 967 6268

info@arheatingservices.co.uk



PLUMBING SERVICES



- Plumbing, Gas & Heating Services
- Boiler installations • Boiler repairs
- Boiler servicing

Contact **Evo Heat** on
Tel: **0117 4504794** or **07506 698 832**
Email: info.evoheat@icloud.com

hanham&longwellgreenvoice

LOCAL SERVICES

To advertise, contact Emma on
0117 9082121 or 07715 770448
or email sales@hanhamandlongwellgreenvoice.co.uk

PLUMBING SERVICES

LOCAL PLUMBER

- * TAPS, WASHERS
- * BALL VALVES
- * LEAKS, WASTES
- * OVERFLOWS, DRIPS
- * LEAD PIPES
- * TOILETS, FLUSHES



CALL
GARY

(0117)

9564912

****O.A.P. DISCOUNTS****

ROOFING SERVICES



CARPENTRY & ROOFING

All aspects of carpentry and roofing work undertaken

* Over 28 years' experience *

- Bespoke • Kitchens
- Bathrooms
- Worktop jointing
- Doors • Flooring
- Handrails and spindles
- Interior and exterior decorating
- Roofing repairs
- Complete reroofs
- Flat roofs
- Chimney repairs
- Fascia boards and gutters
- Storm damage
- Insurance work

*** No job too small ***

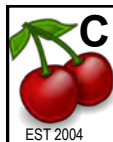
For a friendly free quotation, call Ross on

Tel: 07738 054042
0117 987 0177

rforcarpentry@hotmail.co.uk



PLUMBING SERVICES



Cherry Plumbing & Heating Services

Over 20 yrs experience

Boiler Breakdown
Service & Installation
Engineer

All makes and models worked on

Call **Darren** on
07787 956651



PLUMBING SERVICES

LOW COST PLUMBING



- Taps, Washers ✓
- Toilets, Cisterns ✓
- Leaks, Blockages ✓
- Tanks, Overflows ✓
- Lead Pipes, Stopcocks....etc... ✓

OAP DISCOUNTS and NO VAT

0117 **957 5092**

ROOFING & PROPERTY

Tom's Roofing & Property Maintenance

ALL ASPECTS OF ROOFING

- REFELT & BATTENS • REROOFS
- ROOF REPAIRS • FLAT ROOFING
- CHIMNEY REPAIRS • LEAD WORK
- FASCIA SOFFITS • GUTTERS

24 hours emergency callout

Call now for a free quote

Tel: 0117 9861652

Mob: 07747 131431

tomsroofingandmaintenance@yahoo.com

PLUMBING SERVICES

BESPOKE BATHROOMS & PLUMBING

07790950351

NO PLUMBING JOB TOO SMALL
COMPETITIVE PRICING & FREE QUOTATIONS

- Bathrooms • Sinks • Radiators
- Leaks • Showers • Taps • Basins
- Toilets • Tiling • Ball Valves

BESPOKEBATHROOMS@HOTMAIL.COM

PROPERTY MAINTENANCE

T.L.C HOME & PROPERTY MAINTENANCE

- Bathroom & Kitchen Installation
- Plumbing • Wall & Floor Tiling
- Interior & Exterior Painting & Decorating
- Guttering & Fascias • Plastering
- Patios, Paving & Timber Decking
- Fencing & Walls • Total Refurbishments

NO JOB TOO SMALL - CONTACT US FOR
A FREE NO OBLIGATION ESTIMATE

tel: **07974 222656**

email: williamtlc@hotmail.co.uk

TREE SERVICES



Fully qualified & insured tree surgeon

All aspects of tree surgery

Contact James:

07837629316

jhstreeservices@outlook.com



YOU DESERVE CARE THAT MAKES A DIFFERENCE

**Quality care you can trust, delivered
in the comfort of your own home**

Keeping you and your loved ones safe
without the need for residential care

- Our care is person-centred - we go the extra mile
- All CareGivers are introduced to Clients in advance
- We do not wear uniforms, unless requested to
- Our care calls are never rushed
- One-hour minimum up to 24/7 live-in care

**Call us for a
FREE care
assessment**



Our services include:

- Companionship
- Transportation & errands
- Meal preparation
- Light housekeeping
- Help with washing & dressing
- Personal care
- Medical reminders
- Post-operative support
- Holiday & respite cover
- Specialist dementia care
- Hospital to home
- Live-in care

and much more...

0117 370 1710

bristol@rightathome.co.uk

www.rightathomeuk.co.uk/bristol



**Right
at
Home®**
Quality Care in Your Home