

hanham&longwellgreenvoice

May, 2026 Issue 114

www.hanhamandlongwellgreenvoice.co.uk

FREE EVERY MONTH IN HANHAM & LONGWELL GREEN



Protesters on the former Shortwood Lodge Golf Club course, which could be built on

Protesters on the march

CAMPAIGNERS who want to stop land being taken out of the Green Belt to allow thousands of new homes to be built have held a protest march.

Around 100 protesters marched through areas that could be transformed by new developments if a planning blueprint drawn up by South Gloucestershire Council is approved.

The protest was held weeks before the council's draft Local Plan is due to undergo a public examination in front of a government inspector, to see if it meets the future housing needs of the district.

Members of Save Our Green Spaces-South Gloucestershire (SOGS-SG) held the joint protest and fundraising walk as part of the Community Planning

Alliance's National Day of Action for Nature, Parks and Green Spaces on April 18.

Different groups of campaigners walked with children and dogs, with some riding horses, from areas where new housing could be built if South Gloucestershire Council's draft Local Plan is approved by the government

Turn to Page 3



Walk in tribute to Jayden, 14

Players and supporters of Kingswood Athletic FC scaled Pen y Fan in memory of young football fan Jayden Watts, who has died, aged 14.

PAGE 8

Sam's amazing Everest trek

Sam Pickett, 15, a student at Hanham Woods Academy, is believed to be the youngest Briton to trek to Everest Base Camp.

PAGE 3

NHS pulls plug on hospital

Health chiefs have scrapped plans for NHS hospital provision at Frenchay, to the dismay of campaigners who've been battling for decades.

PAGE 16

Need an Electrician ?



-Free Quotes

-Inspection and Testing

-New builds and Extensions

-Extra Sockets and Lights

-Fire Alarm, Smoke Detectors

-Anything Electrical we can do !!!

Full EICR Electrical Test from £105

Consumer unit change from £305

Elderwood Electrical

Electrical Installation, Maintenance and Testing

www.ElderwoodElectrical.com

Office:- 0117 9322379 Mobile:- 07725 058581

Hanham & Longwell Green Voice contacts

Publisher

Emma Cooper

0117 908 2121 / 07715 770448

sales@hanhamandlongwellgreenvoice.co.uk

Editor

Linda Tanner

0777 0700579

news@hanhamandlongwellgreenvoice.co.uk

Advertising Sales

0117 908 2121

sales@hanhamandlongwellgreenvoice.co.uk



Follow us on Twitter

@twitter.com/Hanham LWGvoice



Find us on Facebook

www.facebook.com/

hanhamandlongwellgreenvoice

June deadline

Our June edition deadline is May 20th. To ensure your news or letter is included, please contact us by then. Advertisers are also asked to contact us by the same date.

Your views

Letters for publication can be sent to the above email addresses or by post to Letters, Hanham & Longwell Green Voice, 16 Ashmead Business Centre, Ashmead Road, Keynsham, BS31 1SX. The editor reserves the right to edit your letter.

Useful numbers

South Gloucestershire Council

www.southglos.gov.uk

01454 868009

Citizens Advice Bureau

0344 499 4718

Police

www.avonandsomersetpolice.uk

General enquiries: 101

Emergency: 999

Fire

www.avonfire.gov.uk

General enquiries: 0117 926 2061

Emergency: 999

NHS Health

Call 111

West of England Mayor -

Mayor Helen Godwin mayor@

westofengland-ca.gov.uk

0117 428 6210 70 Redcliff Street,

Bristol BS1 6AL

Well Aware (health and social care information)

www.wellaware.org.uk

Freephone: 0808 808 5252

We are Bristol helpline

Freephone 0800 694 0184

Mon-Fri 8.30am-5pm

Weekends 10am-2pm

Complaints

Despite our best efforts, we sometimes get things wrong. We always try to resolve issues informally at first but we also have a formal complaints procedure. If you have a complaint about anything in the Hanham & Longwell Green Voice, contact the publisher using the details below. We aspire to follow the Code of Conduct of the NUJ (National Union of Journalists), which holds journalists to a high standard of behaviour.

Further details of the complaints process can be found on the Voice website here, or can be obtained by contacting the Publisher.

PUBLISHER'S NOTE: Hanham and Longwell Green Voice is independent. We cannot take responsibility for content or accuracy of adverts, and it is advertisers' responsibility to conform to all relevant legislation. We cannot vouch for any services offered. Opinions are not necessarily those of the editor. Hanham and Longwell Green Voice is distributed each month to residents. If for some reason you do not get a copy, please collect one from local pick-up points. Feedback is always welcomed, contact Emma Cooper on 0117 908 2121 or sales@hanhamandlongwellgreenvoice.co.uk This month 9,500 copies will be distributed around Hanham and Longwell Green.

A member of the



NEWS

Bin changes arrive

SOUTH Gloucestershire Council is urging residents to be ready for changes to bin collections in May.

Homes in the district will be moved onto three-weekly black bin collections from Monday May 11.

But residents have been advised that some people who were due to have a collection during that week under the old fortnightly system may find themselves waiting "22 or 23 days" before their bin is emptied on the new rounds.

The council says it has written to all residents who will go over 22 days without a black bin collection during the transition period and will offer "extra allowances for black bin waste on their first three-weekly collection".

Other households may get an extra collection before the new collection rotas start.

The council is advising people to check what can be recycled on its app, and start using new blue bags to recycle soft plastics as soon as they arrive.

A spokesperson said: "This material takes up 29% of the space in the average black bin in South Glos. Recycling these items will free up space in the black bin for waste that can't be recycled."

Households needing special services for nappies or incontinence products are being advised to sign up for free, fortnightly collections.

Advice on the new system can be found at tinyurl.com/5f49zpuu.

The council is also advising residents thinking of disposing of fridges and freezers that it may have to stop accepting them at short notice, because of a national shortage in processing capacity.

The council is advising residents to sell or give away fridges or freezers that still work, or use shops' disposal services where retailers take an old fridge or freezer when they deliver a new one.

Alpine LANDSCAPING

Established family firm with 25 years experience

25% OFF WITH THIS ADVERT

- ★ Senior Citizens Special
- ★ Garden Clearance — Regular or one-off
- ★ Patios ★ Fencing ★ Tree Work ★ Turfing
- ★ Hedgecutting ★ Planting (Shrubs etc)
- ★ Organic manure delivered — Also applied
- ★ Professional and guaranteed work
- ★ Brick & Blocklaying

CALL JOE FOR A FREE QUOTE
Tel: 0117 959 2143
Mob: 07891 253 122
www.alpine-landscaping.co.uk

NEWS

Hitting the heights with the ultimate work experience!

Peak success as Sam, 15, treks to Everest Base Camp

MANY teenagers struggle to sort out work experience because of red tape and concerns about safeguarding - but when your dad runs an expedition company, anything is possible!

So it has proved for 15-year-old Sam Pickett, a student at Hanham Woods Academy, who spent his Easter holidays successfully trekking to Everest Base Camp – one of the world’s most demanding high-altitude challenges.

Sam, who’s in Year 10, completed the two-week trek in Nepal, reaching Everest Base Camp at an altitude of approximately 5,350 metres. The journey is widely regarded as a significant endurance challenge, even for experienced adult trekkers.

Throughout the expedition, Sam faced and overcame a series of extreme conditions and adversities, including temperatures as low as -25°C, snowstorms, and even managing an injury along the way. Despite these challenges, he demonstrated exceptional

resilience and determination to reach his goal.

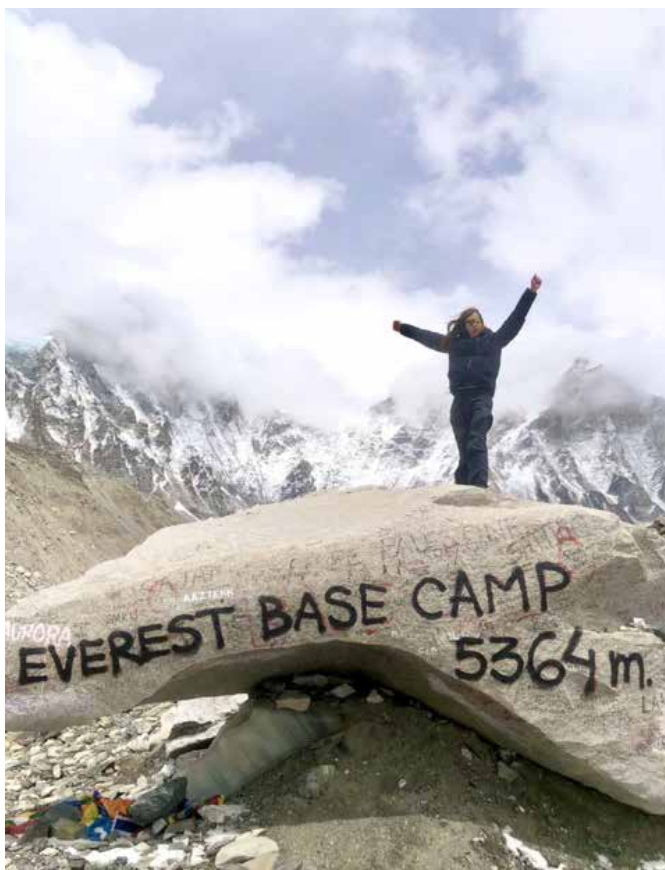
Sam said: “The hardest section was the last part. Temperatures dropped to minus 20 degrees with snow and ice along the route. It was a great feeling and relief to finally reach Everest Base Camp.”

According to available records, Sam is believed to be the youngest person from Bristol to complete the Everest Base Camp trek, making his achievement even more remarkable.

His dad Dom, who runs trips all over the world, said Sam had shown not only physical strength but also mental toughness well beyond his years.

He said: “There was a team of 10 on the expedition and I was unsure how Sam would perform given the pressures of climbing with clients much older than him. However, Sam proved to be one of the stronger members of the team, with many suffering from the extreme cold and altitude sickness.”

Dom, who was the first person from Bristol to summit



What an achievement! Sam celebrates at Everest Base Camp

Everest in 2011, said Sam’s achievement reflected the ambition and perseverance encouraged by Hanham Woods Academy’s ethos of “dream big.”

He hopes it will inspire other young people in the local community to set themselves ambitious goals, embrace challenges, and believe in their

ability to achieve something extraordinary.

He said: “I’ve spent much of my life in the Himalayas so it was a great feeling to trek with Sam and reach Everest Base Camp. Sam showed real strength and determination throughout always having a spring in his step and a smile “



Golden Valley Farm Shop & Cafe

Breakfast, Lunch, Coffee & Cakes and Afternoon Teas

WE ARE PERFECT FOR:

PRIVATE HIRE & CORPORATE EVENTS

Baby Showers & Christenings • Afternoon Teas, Buffets or Sit Down Meal • Weddings • Parties • Celebration of Life • Corporate Events

We can accommodate 50 people inside and 450 outside!



OPENING HOURS
Tues-Sun 9am-4pm

07511 11 62 61 | gvfarmshop@gmail.com
Golden Valley Lane, Bitton BS30 6NZ

NEWS

Curbs lifted at last at ring-road traffic lights

TRAFFIC restrictions at the Hambrook junction of the Avon Ring Road and Bristol Road have been removed.

A ban on drivers on the westbound A4174 turning right towards Winterbourne, and traffic heading north from Frenchay going straight across or right at the junction, was introduced in 2019.

The then government told the

council it had to make changes to cut nitrogen dioxide pollution to within legal levels.

Since that time traffic from Downend and Frenchay has had to go around the roundabout at the M32 junction to reach Winterbourne, and traffic from Frenchay has only been able to turn left at the lights.

The authority was told it could not reverse the changes

until the Joint Air Quality Unit - part of the Department for Environment, Food and Rural Affairs - could confirm that the site had met national air quality standards for two years running.

In 2021 the government said it would not accept figures from pandemic years because of the reduction in traffic during lockdowns.

Now the council has received a letter from DEFRA, which says monitored air quality in both 2023 and 2024 met the national standards.

The improvement is believed to be partly because of an increase in the number of electric cars on the roads and in engine efficiency for other vehicles.

The council fully reopened the junction, removing the concrete barriers that stopped drivers from making banned turns, on Monday, April 27.

It also reinstated the bus lane on the westbound ring road on either side of the traffic lights - so other traffic passing through will be restricted to two lanes instead of three.

Cabinet member Cllr Sean Rhodes said: "We know how significant this junction is for road users, residents and local communities, and we have listened carefully to the concerns raised about the measures. I recognise they have caused inconvenience and we have worked hard behind the scenes to secure clear direction from the government on this matter.

"We have to be confident that any return to previous routes through the junction will not result in a return to unacceptable air quality. But because air quality at the junction has improved markedly in the past couple of years (and it seems likely that this is due to improvements in engine efficiency, and the increase in hybrid and electric vehicles), we can be confident that this will not happen."

The removal of the restrictions has been welcomed across political lines, with Liberal Democrat Frenchay & Downend ward councillor Raj Sood, and Conservative ward councillor and group leader Liz Brennan both welcoming the change.

Labour MP Claire Hazelgrove said: "I know this will be welcome news - and perhaps hard to believe until you see it after so long!"



YOU DESERVE CARE THAT MAKES A DIFFERENCE

Quality care you can trust, delivered in the comfort of your own home

Keeping you and your loved ones safe without the need for residential care

- Our care is person-centred - we go the extra mile
- All CareGivers are introduced to Clients in advance
- We do not wear uniforms, unless requested to
- Our care calls are never rushed
- One-hour minimum up to 24/7 live-in care

Call us for a **FREE** care assessment



Our services include:

- Companionship
- Transportation & errands
- Meal preparation
- Light housekeeping
- Help with washing & dressing
- Personal care
- Medical reminders
- Post-operative support
- Holiday & respite cover
- Specialist dementia care
- Hospital to home
- Live-in care

and much more...

0117 370 1710

bristol@rightathome.co.uk

www.rightathomeuk.co.uk/bristol



Protesters march to save the Green Belt



Protesters on the former Shortwood Golf Course at the end of the SOGS-SG march

From Page 1

They headed to the old Shortwood Golf Course, near Mangotsfield, where 1,600 new homes could be built under the Local Plan.

A public examination into the legal compliance and soundness of the Local Plan by a government-appointed inspector is due to start at Kingswood Civic Centre on May 19, with a total of 15 days of hearings held in three-day blocks on five separate weeks. The final hearings will take place on July 14 to 16.

The draft Local Plan proposes sites for more than 22,000 homes in the district over the next 15 years.

SOGS-SG says the east Bristol area is being asked to take too many of those homes.

The group used the walk to collect donations towards professional representation by a planning consultant at the Local Plan hearings - as the Voice went to print they had raised more than £10,000.

Chair Darren Lawrence said: "We've got to keep pushing.

"People feel they aren't being listened to.

"It's not about being radical - there's no infrastructure to support homes in these areas.

"This isn't 'grey belt', it's Green Belt - we have to stand up and say enough's enough.

"I'm absolutely overwhelmed with the support we've received on the march - we've also had a lot of support online.

"We're facing the total destruction of the East fringe. We feel that if plans to build in



Jill Barnes, of Mangotsfield, dressed in a badger outfit and carried cuddly animals representing species whose habitats could be threatened by housing.

all of the places proposed, from Saltford to Filton to Yate, happen we'll end up with a mega-city.

"We're not against housing but we are against mass housing

on the Green Belt - there is an alternative."

Among the proposals in the Local Plan are sites for 1060 homes in Warmley, 1,600 at Carsons Green, 2,000 in North Lyde, 280 in Shortwood, more than 800 in the Oldland Common area - including 300 at Barry Road - and 185 on two sites in Hanham.

Hanham and District Green Belt Conservation Society is working with a planning consultant on its submissions to the Local Plan hearing.

Details of Local Plan hearings can be found at localplanexamination.commonplace.is.

SOGS-SG has set up a website with details of upcoming planning applications and its donation page at sogssg.org.

Spectrum
Accountancy Solutions
Are your company's finances keeping you up at night?

- Payroll ● VAT ● Bookkeeping ● Tax

Come and see us at our new, local office on Staple Hill High Street to see how we can support your business.

Call or come in to book your initial free consultation
(0117) 990 2218
18 Broad Street, Staple Hill, Bristol BS16 5NX
hello@spectrum-accountancy.co.uk www.spectrum-accountancy.co.uk

IN NEED OF MORE STORAGE SPACE?

Make use of your loft and create more space in your home.

- ✓ Loft Ladders
- ✓ Raised Loft Storage
- ✓ Loft Lighting
- ✓ Insulation

Loft storage solutions for period and new build homes that don't void your warranty.

01373 813 438
www.loftboardingsouthwest.co.uk

NEWS

Thief banned from Boots

A SHOPLIFTER who stole goods worth more than £40,000 from shops including stores in Longwell Green has been jailed.

Joshua Milkins targeted chemists, sports and leisure shops on retail parks in December and January.

He targeted Longwell Green, Emersons Green, Avonmeads in St Philip's, Worle, Imperial Park in Hartcliffe and Worle, near Weston-super-Mare.

After a police investigation he was arrested and admitted 14 counts of shop theft in February.

Milkins, aged 36, of Meriet Avenue, Hartcliffe, was sentenced to three-and-a-half years in prison at Bristol Crown Court in April.

He was also made subject to a five-year Criminal Behaviour Order, banning him from entering any branch of Boots in Bristol or South Gloucestershire and from being in possession of a tool to remove security tags from stock.

After the case Sgt Al-Nashir Bandali said: "No business or shop worker should have to put up with theft and related anti-social behaviour issues and we're working hard to identify those responsible and put them before the courts.

"We will continue to take action wherever possible and would urge any business or person who witnesses an incident of shoplifting to report it to us.

"This information is really important in enabling us to take action like this."

Crimes in progress should be reported by calling 999 - after the event they can be reported by calling 101 or online at avonandsomerset.police.uk.



Joshua Milkins



Puddle the duck with the volunteers who released the ducks and followed their progress

Ducks draw the crowds

THE Easter Duck Race has been a regular event at Willsbridge Mill for the last five years and has become hugely popular. This year four separate races were held on 11 and 12 April and tickets were all sold out long before the start of each race. Hundreds of plastic ducks were released upstream into the Syston Brook, starting at the bridge and progressing to the Mill. Visitors could follow the progress of their duck from a path above the brook as the ducks made their way to the Mill. Every duck had to be accounted for and a team of volunteers in wading gear followed the progress of the ducks until they reached their destination by the Mill building where a net had been strung across the width of the stream to collect the ducks.

This year, in addition to the race, there were attractions with food stalls, games and face painting for children. There were also stalls selling gifts and original art from local artists. We were pleased to welcome Puddle the duck from Puddle Ducks Swim School who delighted the children.

Pauline Lovell

Steve Bellamy Carpets



- Home selection carpet and vinyl's
- Huge selection of carpets and vinyl chosen in the comfort of your own home
- Free quotations without obligation to purchase
- No pressure selling
- Professional service established for over 30 years
- All inclusive prices, no hidden extras, the price quoted is the price you pay



Tel: 07860 441776

We will better any like for like all inclusive quote

Great people wanted

Looking for a new challenge?

There are some great opportunities with Ayvens. Whether you want to learn new skills or try something new, your next role might be just around the corner - literally.



ALD Automotive, part of the Ayvens Group.

Scan the QR code to see what's available.



NEWS

Super sister Kirianna in line for award

A TEENAGER from Longwell Green has been nominated for a WellChild Award, recognising her extraordinary role as a sibling to her younger sister, Zeniah, who lives with a life limiting condition and complex medical needs.

The family is supported by Jessie May, the children's hospice at home charity. Their nurses have become a trusted presence in the household, supporting not only Zeniah but ensuring Kirianna feels seen, valued, and included.

Asked why she thinks she was nominated, Kirianna, a pupil at Collegiate School, answered with her characteristic modesty: "I look after her a lot... I sit with her and play with her. When we go on walks, I push the pram, or if she's sad, I sit with her in the car."

Her mum, Dana, says her daughter never seeks recognition for the countless ways she supports the family:

"People don't realise how much siblings do. She helps lift her, carries her bags, makes sure she has her medicines. She's brilliant - a daughter and sibling who does so much without ever asking for praise."

Zeniah, who attends Warmley Park School, has a rare genetic condition called Mowat-Wilson Syndrome. Only about 700 documented cases in the world. She has had three heart surgeries and has epilepsy and learning difficulties all associated with the condition.

Despite the challenges she and her parents Dana and Marc face, Kirianna's compassion never falters. Dana explains: "I took Kirianna to Glasgow on a plane recently as we have



Kirianna is full of love and support for sister Zeniah

never been able to take her on a plane before because of Zeniah's needs, and she was so excited. She is never resentful - always compassionate. Love her heart."

She helps care for her sister, advocates for her at school, raises awareness about disability, fundraises for charities, and even learned Makaton so she could communicate with Zeniah and help others do the same.

The demands of being a young carer don't stop at the front door. They follow her into school too. Dana highlights how important it is for adults to understand this:

"Sometimes sibling carers are coming into school and you don't know what's gone on that morning. Kirianna may have had to deal with 12 paramedics in the house over night with Zeniah

being admitted to hospital and then show up for school ready to learn the next day."

She's grateful that Kirianna's teachers recognise this.

"We are so blessed that her school is supportive - they have given her a student mentor and they give her a time out pass as and when needed; school is such a safe and happy place for her."

Her WellChild Award nomination shines a much needed spotlight on the resilience, empathy, and love shown by siblings across the UK - children who grow up understanding complex medical routines, unpredictable days, and the emotional weight of caring for someone they adore.

Chris Capewell, head of communications and marketing at WellChild, said: "Established in 2005, the WellChild Awards, in association with GSK, have become one of the most special moments in our year. They give us the chance to celebrate extraordinary children and young people like Kirianna from across the UK, who show exceptional courage in the face of serious illness."

Victoria Tarr is one of Zeniah's Jessie May nurses who supports the whole family is very proud of Kirianna and says this nomination is more than deserved: "I see firsthand how incredible she is with Zeniah. She has a natural gentleness and patience that you can't teach. At Jessie May, we always try to make sure siblings feel supported and understood, and with Kirianna it's clear how much she gives of herself every day. She's an amazing sister, and it's a privilege to watch the bond they share."



JOIN AS A PRIVATE PATIENT AND ACCESS FREE CHILD SPACES

WE ARE ACCEPTING NEW PATIENTS

NOW ONLY **£70** INCLUDING X-RAYS

SCAN QR CODE TO BOOK YOUR APPOINTMENT NOW



0117 9324455

INFO@OLDLANDDENTAL.CO.UK

OFFER OF THE MONTH

5 DOORS FITTED IN YOUR HOME FOR ONLY £579


Any 5 white primed 'suffolk' or 'colonial' doors complete with a choice of 7 different handles, hinges and latch. Fitted to your home.

DOOR EXPRESS

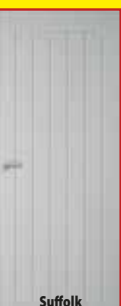
08000 973333 • 07767 376770

A PHONE CALL WILL SECURE YOUR ORDER FITTING DATE

Offer applies to door sizes 78" x 30" & 78" x 27"



Colonial



Suffolk

www.doorexpressouthwest.co.uk

NEWS

Family and football community pay tribute to enthusiastic and loving Jayden, 14

TRIBUTES have been pouring in for a remarkable football fan who has died at the age of 14.

Jayden Watts assisted his dad Justin both in managing Kingswood Athletic Sunday league team and in working in hospitality at League Two Bristol Rovers.

Now his family, friends, players and supporters are working to ensure Jayden, who died at Easter following a lifelong struggle with a heart condition, has the send-off he deserves.

Jayden, who attended Blaise High School, was unable to play football because of the heart defects he was born with, but he loved the game and followed it closely.

Kingswood Athletic said: "Jayden was our assistant manager, kit man, and social media magician. More than that, he was Kingswood Athletic's biggest fan, and our teammate.

"The club will never be the same without him. We will miss him greeting us at the changing rooms, the clips of our goals, and his end of season awards. We will remember his positivity, his strength, and the sound of his celebrations."

Jayden was also well known at the Memorial Stadium, where he helped Justin and his nan Hazel on match days. A minute's applause was held for him during Rovers' match against Crawley.



Jayden Watts, 14, was a huge fan of both Bristol Rovers and Kingswood Athletic

Unusually, the referee stopped the game in the 14th minute to allow players from both teams to join the crowd in paying tribute, as Jayden's picture appeared on the big screens.

A club spokesperson said: "All at Bristol Rovers Football Club were deeply saddened to learn of the passing of Jayden Watts.

"Jayden's love and passion for Rovers was a constant on matchdays at The Memorial Stadium, attending each and every game with his father Justin.

"His infectious personality lit up the Seat Unique Suite as he assisted his dad in hosting



hospitality guests and club partners, and Jayden took great pride in running back to the hospitality area to update club staff when the Gas had scored a goal."

Justin said the support of the football community meant a great deal to him and to Jayden's mum Danielle and brother Oakley, seven.

Players and supporters of Kingswood Athletic organised a sponsored walk up Pen y Fan to raise money towards the cost of Jayden's funeral, which will take place at Westerleigh Crematorium on Saturday May 23 at 11am.

The club is also staging a memorial match for Jayden in Southey Park, Kingswood, on Sunday May 3 at 2pm, when a team of Kingswood Athletic Legends will take on the current side, who play in the Bristol Sunday Premier League.

Justin said: "Jayden was a great kid. He brought a lot of love and has made a difference to a lot of people's lives. I want him to have the very best send-off we can give him."

As the Voice went to print, the fund stood at just over £5,000. You can contribute at <https://tinyurl.com/mz7vd3up>

A DIGITAL work experience (WEX) programme has been rolled out across academies within the Cabot Learning Federation (CLF), engaging more than 100 Year 10 students aged 14–15.

Students from Bristol Metropolitan Academy, Digitech Studio School, Bristol Brunel Academy, King's Oak Academy, and Hanham Woods Academy participated in the pilot, designed to raise aspirations at a

Pupils are tech pioneers

pivotal stage in their educational journey.

Delivered in partnership with We Job Box, the programme combined five virtual days across a range of industry sectors with two in-person workshop days hosted by the Bristol Met.

Students attended interactive sessions, completed real-world

activities, and took part in live Q&A discussions with leading industry professionals.

Participating organisations included the NHS, Barclays, HSBC, Lloyds Bank, Chelsea FC, BBC Media Operations, Spotify, London Stock Exchange Group, Deloitte, and Bosch, alongside innovators in sustainability,

healthcare, robotics, and technology. Students also engaged with teams from BBC R&D, BBC WiSTEM, and BBC Radio One, and took part in interview practice sessions with Chelsea FC.

Further recognition of the programme came with CLF representatives attending the official launch of We Job Box at the House of Lords. The trust has been invited to remain part of the national working group.

NEWS

The magic of Mary Poppins

It was a spectacular, supercalifragilisticexpialidocious production of Mary Poppins Junior that wowed audiences at Hanham Woods Academy.

Mary Poppins Junior is a 60-minute musical adaptation of the classic story, focusing on the troubled Banks family in 1910 London.

When magical nanny Mary Poppins (played by Sophie Frost, Year 11) arrives, she transforms the misbehaved Jane (played by Naomi Dyson, Year 8) and Michael (played by Ruby Blight, Year 7), teaches the distracted parents to value each other, and shows that 'anything can happen if you let it'.

With a cast and crew of more than 70 students from Years 7-11, this production had been in rehearsals since October 2025



with students dedicating months of hard work to bring the show to life. Five performances all played to packed houses.

From acting and singing to technical support and stage management, the production was

a whole-school effort.

Caitlin Simmonds, drama and English teacher, said: "This has been an extraordinary team effort. Our students have shown incredible dedication, creativity and teamwork

throughout the rehearsal process and performances. We are immensely proud of what they have achieved, Mary Poppins Junior has truly captured the imagination and spirit of our school community."

Need legal advice?

WARDS
SOLICITORS

We offer expert services for you,
your family and your business

Get in touch: 0117 986 3504

16 High Street, Keynsham, Bristol BS31 1DJ

wards.uk.com

Offices in: Bradley Stoke | Central Bristol | Clevedon | Henleaze | Keynsham | Nailsea
Portishead | Staple Hill | Thornbury | Weston-super-Mare | Worle | Yate

Solving your legal problems ...locally

NEWS

THE driver of a lorry which crashed on the Avon Ring Road near Mangotsfield, killing a young passenger, has admitted causing death by careless driving.

Michael Ronner had denied causing the death of Tyler Carley in the collision in 2023 by driving a DAF truck without due care and attention. He was due to face a trial at Bristol Crown Court at the end of March, but days before the trial was due to start, he changed his plea to guilty.

Ronner, aged 39, from Warmley, is due to return to the court to be sentenced at the end of April. He has been released on bail.

Tyler, who was 20, was killed when the lorry he was a passenger in collided with the central reservation of the A4174 between the Dramway and Siston Hill roundabouts on the evening of December 5, 2023.

He was working as a scaffolder and living in Thornbury, having spent his early life in Kingswood and Mangotsfield before moving to the town, where he attended the Castle School.

Tyler's friend and colleague Cameron Williams, who was also a passenger in the lorry, survived the crash without any physical injury but later took his own life after suffering survivor's guilt and post-traumatic stress disorder from the incident. Cameron, who was 19 when he died in 2024, was a former pupil of Stanbridge Primary and

Lorry driver admits causing Tyler's death

Downend School.

Police designated investigating officer Noelle Poupard said: "Tyler was a much-loved young man, with his whole life ahead of him.

"His tragic death was a direct result of Michael Ronner's lack of concentration and not appropriately ensuring the safety of his passengers while driving a lorry.

"It is deeply regrettable that Ronner waited until less than a week before trial to enter a guilty plea.

"Had the plea been entered earlier, it would have spared Tyler's family a significant amount of distress and heartache since the incident.

"The police investigation was lengthy and complex, including several expert reports in preparation of trial, but it demonstrated Ronner's actions were the cause for this collision and the death of Tyler.

"I would like to express my deepest condolences to Tyler's family. The strength they have shown in the lead up to the trial is commendable and I am just grateful we were

able to provide them with some closure."

Tyler's mum Gemma said: "After back and forth court dates, and him changing his plea three days before trial, it is a relief for me as I never wanted the rest of Tyler's family and friends to have to hear or see the distressing evidence that only I have seen and read.

"No mother should ever have to see the things I have, sadly."

Since his death Tyler's parents have set up a charitable foundation in his memory, supporting charities which help bereaved families.

The Road Forward - Tyler Carley Foundation has organised fundraising events and first aid training sessions.

The latest sponsored event will see Tyler's cousin Lauren Carley and two of his friends take on the Great Bristol Run 10K on May 10, while another two friends run the Bristol Half-marathon.

Donations can be made at the foundation's JustGiving site, at [tinyurl.com/4rj3752j](https://www.justgiving.com/4rj3752j), or via its Facebook page.

Your black bin collections are changing



Find your new three-weekly collection day and set reminders in the council app.



southglos.gov.uk/app

NEWS

AI threat to council

FRAUDSTERS using artificial intelligence are a growing threat to South Gloucestershire Council's finances and security, councillors have been told.

The authority is hitting back by using the technology itself to prevent attacks and scams but is "slow to keep pace with risk", a meeting heard.

An annual counter-fraud report said a major initiative led by the government's Cabinet Office to match suspicious activity with data held by South Gloucestershire Council found the authority had recovered a total of £479,183 in the last year.

The vast majority of the money – £437,468 – was from households with more than one adult wrongly claiming council tax single person discount.

The council's head of internal audit and risk Justine Poulton told the audit and accounts committee in March that fraud was still a big risk for the organisation, although while the number of cases had doubled in

the past six years, the average value of each one had halved.

She told the meeting: "AI-enabled fraud is becoming more prevalent, with fake identities."

Ben Burton (Con, Frenchay & Downend) said: "The report looks at AI from a negative perspective in terms of increasing potential activity.

"More concerning is the fact that councils are slow to adopt the technology of AI to counter that threat."

Cllr Burton asked whether the council could team up with others to invest in AI collectively to combat the danger.

Finance director Joss Convey said AI was used to look at overall information but that this was then followed up by officers on a case-by-case basis.

She said council tax and business rates collection remained 'pretty solid' as the team was a keen adopter of AI and data management.

By Adam Postans, Local Democracy Reporting Service

LETTER

No one walks alone – walk raises more than £3,000

ON Saturday March 7, our team "The Queens Head Hanham – No-one Walks Alone" took part in the March in March event in support of Combat Stress.

The team was made up of patrons, friends and family from The Queens Head, including several ex-servicemen, all coming together to support veterans' mental health and show that no one walks alone.

Our original fundraising target was £500 ... and thanks to the incredible generosity and support from our community, we're thrilled to say we have raised £3261.00! which forms part of a massive half a million pounds raised by all those

that walked throughout the UK. A massive thank you to everyone who walked, donated, supported, and cheered us on. Big shout out to Hallett Construction, one of our major sponsors, and to Rateavon for supplying the T-Shirts. Also, to the landlord Allen Williams for hosting the after party and especially the band - The Pulsations for providing the music free of charge – some tired legs were still dancing long after the walk had finished.

Your kindness will make a real difference to veterans who need support.

If anyone would like to donate there is still time – simply type the URL below into your browser and you will be directed to the Team Page: <https://events.combatstress.org.uk/fundraisers/>

The Queens Head

WRITE TO US!
news@hanhamandlongwellgreenvoice.co.uk

WE CARE LIKE FAMILY



- ✔ Inhouse physiotherapy team
- ✔ Continuous décor upgrades
- ✔ Automated care plans
- ✔ 24/7 On-site nursing support
- ✔ Adapted wheelchair car
- ✔ Idyllic gardens & grounds
- ✔ Amazing activities plan



Come And See US : 0117 965 4466

NEWS

International double for Ranger Imogen

A MEMBER of Bitton Rangers is raising funds to help fulfil her dream of representing local Guides at two international events.

Imogen, 14, has been part of Girlguiding in the village since the age of four. As well as attending the Rangers, she also helps at Guides.

In January 2025, she was selected to represent Guides on a trip to Belgium. Soon afterwards, she was chosen to represent the South West on an international visit to India this August. The trip will involve taking part in a community project as well as experiencing Indian culture and heritage.

More recently, Imogen was selected to represent Girlguiding at an international

jamboree in Iceland next summer. To raise funds, she has already organised a successful event at the Portwall Tavern in Bristol, supported by actor and radio presenter Joe Sims. She is now hosting a quiz and comedy night at the Scout HQ in Keynsham on Saturday May 16. Tickets cost £5 and can be bought from Eventbrite – search for ‘Get Imogen to India Quiz & Comedy night’.

Imogen, who lives in Keynsham and attends Wellsway School, is £500 away from her £3,600 target for India. She is now starting to raise funds towards a further £2,700 for the Iceland trip.

To visit Imogen’s GoFundMe page, go to <https://gofund.me/2e3cf8fb>



Imogen is ready for her travels

COMMUNITY NEWS

Tools For Self Reliance

Chipping Sodbury Rotary Club continues to collect any unwanted tools. They are refurbished by volunteers at TFSR and sent for students and small businesses in African countries, where a set of tools is out of reach for most young people.

The Bristol TFSR centre is at the Heritage Museum in Warmley and surplus tools are sold at regular local charity sales. The next

Charity Tool Sale will be on Sunday May 24 (which is the day that most of the Douglas Motorcycles will be on display), and the bank holiday Monday May 25, 11am - 3pm.

Great range of very affordable tools including garden, hand, engineering and tested electrical tools.

Cadbury Heath Library

Free events in May

Chatter Books A free monthly book club for children aged 5-7. Come along on **Saturday May 16**, 10-10.45 am, for Ice Age Mammoth-themed fun!

Tea Talks and Stories **Tuesdays May 12 and 26**, 10.30-10.45am, for adults to come and have a cuppa, listen to a story and chat books with a friendly group

Lego Club **Saturdays May 9 and 23**, 10.30-11.30 am, for children aged four to 11

Craft Session **Tuesday May 26**, 2.30pm, half-term event
• Children must be accompanied by an adult

Abbeyfield
Bristol & Keynsham

Supporting independence in later life

Located next to the beautiful Hanham Common and a short walk from the high street, Kift Lodge, offers a welcoming supportive community for people later in life.

A perfect blend of privacy and companionship, Kift Lodge, provides comfortable self-contained flats, daily home-cooked meals, and vibrant social spaces for a monthly all-inclusive fee.

Book a house tour today:

0117 973 6997

www.abbeyfield-bristol.co.uk

-  En-suite apartments
-  Three daily meals
-  Fully-inclusive fees
-  Private gardens

We'll be at Hanham
Common Fayre
Saturday 9th May.
Come & see us to
find out more about
our houses.



WHAT'S ON

SATURDAY MAY 16

■ TEA & CAKE + CLOTHES SWAP

st St Barnabas Church, Warmley, BS30 5JJ, 2-4pm. Entry is free and we ask that you bring at least one item to swap but there is no maximum limit that you can take away. More information can be found on St. Barnabas church Facebook page

SUNDAY MAY 17

■ **CAR BOOT SALE**, Mangotsfield School, Rodway Hill, BS16 9LH. 10am - 1 pm. £1 entry per adult. Sellers arrive from 9am - £5 per car; £10 per van. Raising money for a new minibus! See Friends of Mangotsfield School Facebook page for more info

REGULAR EVENTS

MONDAY

■ **LONGWELL GREEN ART CLUB**, no tutors. Would you like to do your own thing in the company of a small, friendly group that meet Mondays 9.30 to 12.30, arrive and leave as you please. URC Wesley room. Contact Jackie on 01179600273 or email colown@blueyonder.co.uk

TUESDAY

■ **LIP READING CLASS**, 1.30-3pm at North Common Village Hall, Millers Drive, BS30 8YH. Contact Mary Hall 07790 283939, lipreadingmary@yahoo.com

■ **TUESDAY CLUB** a social group meet every Tuesday 1.45-3.45pm at Longwell Green Community Centre

■ **EXERCISE AND FRIENDSHIP GROUP** at The Community Project in Cadbury Heath (BS30 8EL) every Tuesday, 11:00 – 12:30. Join our over 65s. Improve strength, balance, and more in a fun, inclusive environment. Just £5/session includes tea/coffee and chat. Don't miss out on boosting your well-being! For more information contact Adam - 07875503586

■ HANHAM TENNIS CLUB

Adult Play - Tuesday & Thursday evenings and Sunday afternoons. Monday, Wednesday & Friday mornings, 9.30am - 11 am. .Beginners' session coaching - Wednesday 7-8pm. Junior coaching - most early evenings. New players welcome. Fully qualified LTA coaching. See website for details www.hanhamtennisclub.co.uk

■ LONGWELL GREEN LADIES

GROUP meet at 2pm on the first and third Tuesday of each month at the United Church, Bath Road, Longwell Green BS30 9DU (opp. Aldi). Please phone Maureen on 0117 9322341

■ LONGWELL GREEN SHORT MAT

BOWLS CLUB, We meet Wednesday and Fridays 1.30 to 3.30 at the Longwell Green community centre, Shellards road, in the California suite. All equipment provided. Beginners very welcome. We are a friendly group who need additional members. Email. Michael8bence@gmail.com. Tel 07800869837

■ WELSH CONVERSATION

GROUP The Old Manor House, Keynsham 7pm-830pm 3rd Tuesday of the month 15th July (Aug holidays) Free. Organiser Catherine Dhanjal Call Catherine on 07941669925 or follow <https://www.facebook.com/CymraegBrysteCaerfaddon>

WEDNESDAY

■ BARRS COURT LADIES CLUB:

Wives and partners of the Probus club members meet 10-12 on the second Wednesday of each month at the United Church, Bath Road, Longwell Green. Website: <https://barrscourtprobus.org/>

■ **BARRS COURT PROBUS** is a friendly local club for men recently retired or semi-retired. We're a mixed group- extradesmen, engineers, teachers, shopkeepers and professionals-who meet every 2nd & 4th Wednesday of the month for talks, coffee and outings. Just good company, new experiences. Come as our guest and see what you think. Call Mick 0117 9324104 to check details and say you're coming. Bring a friend - everyone is welcome.

■ **FILTON COMMUNITY BRASS BAND**: We are a community brass band with a huge emphasis on being friendly and playing at community fetes and a few concerts. We practise on Wednesday evenings in Kingswood and would love to encourage developing players and those who may not have played for a few years to join us. To find out more, find us on Facebook or email filtoncommunitybrass@gmail.com

■ **ZEST CHOIR** is an inclusive happy singing group for all adults who love to sing - even if you think you can't or might be Tone Deaf! We meet Term Time Wednesdays at Longwell Green Community Centre from 10.15am-11.45am and from 7-8.30pm. Contact Mary on 07954 170532 www.zestchoirs.com.

■ **LONGWELL GREEN PROBUS CLUB** meets at Warmley Community Centre on the first and third Wednesday of each month.. New members welcome- for details contact Mike on 07817094147

■ **HANHAM BRIDGE CLUB** Every Weds 7-10pm at Hanham Community Centre, new members welcome. See www.hanhambridgeclub.co.uk or call Graham 07790 491564.

■ HANHAM AND KINGSWOOD

PHOTO CLUB. A friendly club welcoming photographers of all abilities to share our hobby. Meeting 7.15pm for a 7.30pm start on most Wednesdays, St Barnabas Church Hall, Warmley, BS30 5JJ. See the website for where meetings will be held (some on Zoom & some evenings out). For details visit <https://www.handkphoto.club> or contact Geoff Mallin at email address, geoffmemsechps@gmail.com

■ **RWP BADMINTON CLUB** play at Hanham Woods Academy 6.30-7.30 social club, 7.30-9.30 league club. Visitors welcome, please look at the website for more details

■ **LIP READING CLASS**, 10am-noon, Warmley Community Centre. Termtime only. Contact Mary Hall 07790 283939, lipreadingmary@yahoo.com

■ FRENCH CONVERSATION

GROUP The Old Manor House Hotel, Keynsham 7pm-830pm 4th Wednesday of the month 23 July (Aug hols) Free. Organisers Steve James & Catherine Dhanjal Call Catherine on 0794 1669925 or join L'Amicale Francaise de Keynsham <https://www.facebook.com/groups/429989176573347/>

■ OLDLAND VILLAGE CLUB

Wednesday Weekly Bingo. Books on sale 7:15pm with Eyes Down 8pm. Open to Members and Non-Members. Over 18s only.

■ OLDLAND VILLAGE CLUB

Monthly Coffee Morning take place every 3rd Wednesday of the month, 10:30am start; open to all, cake donations for the table greatly appreciated.

■ **SHORT MAT BOWLS** Every Wednesday and Friday at the Longwell Green community centre, Shellards Road.

Beginners welcome. 1.30 til 3.30 Text Michael on 07800869837 or email michael8bence@gmail.com

THURSDAY

■ AVON SCALE MODEL

SOCIETY We are a small friendly club, all subjects are included, aircraft, cars, armoured vehicles, fantasy, etc we meet on the 3rd Thursday of the month, at St. Anne's Hall, Barry Road, Oldland Common. at 8pm. Please contact Ian on 0117 9603435

■ BLACK SHEEP HARMONY

We welcome new singers to any of our weekly rehearsals, to join in or just to listen. 7:30pm on Thursdays in Hanham Community Centre. Contact Noey: 07899 088180 or check out our website www.blacksheepharmony.com

■ **WALKING FOOTBALL FOR AGE 50 PLUS** 19.15-20.30

Keynsham Town Walking Football for age 50 plus. Play football at a slower pace for fun and fitness. New members welcome contact keynshamtownwf@gmail.com for details

■ **WALKING NETBALL** Broadlands School, Keynsham, 7pm -8pm £5 per session, ex players or new to netball welcome, for more info email lindab2023@gmail.com

■ Join our SEATED FITNESS

CLASS at Longwell Green Community Centre, perfect for beginners, older adults and anyone needing gentle, low-impact exercise. Thursday 9:15-9:45am, first class free. Contact Sarah today to book your free trial class. on 07975 943589 or sarah@realfitnesswithsarah.com

■ **'STAND UP REACH OUT'** A social group meet every Thursday 2-4pm at Longwell Green Community Centre for different activities.

FRIDAY

■ **TAI CHI FOR PARKINSON'S**: Weekly beginners Tai Chi & Qi Gong class for people with Parkinson's disease, their families and carers. Lincombe Barn, Downend. BS16 2RW. Fridays (term times) 10.15 – 12.15 including tea / coffee break. Contact: Claire - Claire@Taichibodyandmind.co.uk (07769 857672) or Sarah - buqiworks@gmail.com (07815 662844)

■ LONGWELL GREEN

COMMUNITY CENTRE QUIZ

NIGHT, meets normally first Friday of each month at 8 pm. Bar available. For details please contact Marian.r.summerill@gmail.com, or ring 07503 989880.

■ CROFT END SILVER BAND

Hanham Tabernacle, Tabernacle Road, practice 7.15pm - 8.45pm. Players needed on all sections , all ages welcome and training given. We are a happy Band with a good atmosphere. More details contact Rob (Chairman) on 07788 473404

Holding a one-off or regular event?

Call us on
0117 908 2121

PHARMACY COLUMN

Sinusitis pain and discomfort this spring and summer? We can help



0117 932 2293
24 Ellacombe Road,
Longwell Green, BS30 9BA

WHEN people think of sinus problems, winter colds usually come to mind. But for many people, sinusitis actually becomes more common during the warmer months. Spring and summer bring blooming plants, rising pollen counts, and environmental changes that can trigger sinus issues, making these seasons especially uncomfortable.

Sinusitis happens when the lining of the sinuses becomes inflamed or swollen. This can block normal drainage, leading to a build-up of mucus and increased pressure.

Common symptoms include:

- Facial pain or pressure
- Nasal congestion
- Thick nasal discharge
- Headaches
- Reduced sense of smell
- Fatigue

While infections can cause sinusitis, allergies are often the main trigger during spring and summer.

Warmer weather usually means more time spent outdoors. Spring and early summer bring high levels of pollen from trees, grasses, and weeds. When inhaled, pollen can irritate the nasal passages and trigger allergic reactions. This can block the sinus openings, leading to sinusitis.

Allergic rhinitis, commonly known as hay fever, often overlaps with sinusitis. Sneezing, itching, and congestion can worsen sinus pressure and make it easier for mucus to become trapped.

Ironically, escaping the heat indoors is not always the answer. Air conditioning systems can circulate dust, mould, and other

irritants if they are not properly maintained, which may also contribute to sinus problems.

How to Manage and Prevent Sinusitis

1. Reduce allergen exposure

- Keep windows closed on high pollen days
- Shower after being outdoors
- Use air purifiers indoors

2. Rinse your sinuses

- Saline nasal rinses can help flush out pollen and reduce irritation.

3. Stay hydrated

- Drinking plenty of water helps thin mucus, making it easier for your sinuses to drain.

Effective NHS treatment is available

If your symptoms last more than 10 days, become severe, or

include a high fever or swelling around the eyes, you may be dealing with a bacterial infection that requires appropriate prescription-only treatment. Options such as steroid nasal sprays or antibiotics may be available following a consultation under the NHS Pharmacy First service at Ellacombe Pharmacy.

Sinusitis in spring and summer is often overlooked, but it can significantly affect your quality of life.

For adults and children 12 and over, Ellacombe Pharmacy can help manage symptoms and enjoy the warmer months without constant discomfort.

KIDS FEELING UNWELL?

**ELLACOMBE PHARMACY
NOW OFFERS
NHS-FUNDED TREATMENTS
INCLUDING
APPROPRIATE ANTIBIOTICS,
SAVING YOU A GP APPOINTMENT!**

WE CAN HELP WITH:

- **EARACHE**
(1 YEAR & ABOVE)
- **INFECTED INSECT BITES**
(1 YEAR & ABOVE)
- **SORE THROAT**
(5 YEARS & ABOVE)
- **IMPETIGO**
(1 YEAR & ABOVE)
- **BACTERIAL CONJUNCTIVITIS**
(CHILDREN AGED 30 DAYS TO 2 YEARS)

PRIVATE
CHICKENPOX
VACCINE
AVAILABLE
HERE!

NHS
Providing NHS services



VISIT YOUR
**PHARMACY
FIRST**

Find us at:

- 📍 Ellacombe Pharmacy
24 Ellacombe Road, Bristol BS30 9BA
- ☎ 0117 932 2293
- 🌐 www.pharmacyfirstlongwellgreen.com



Come and get your spring COVID-19 booster jab today!

If you're 75 or over, or you have a weakened immune system, you can receive your COVID-19 booster vaccination free of charge.

NO APPOINTMENT REQUIRED

Ellacombe Pharmacy
24 Ellacombe Road, Bristol BS30 9BA
0117 9322293

■ ANTIQUES

Gut instinct



A QUESTION we auctioneers get asked all the time is 'how do you really know what something is worth?' My stock answer is always 'seventy-five percent experience, and twenty-five percent gut instinct.' That gut instinct is a strange feeling – if anyone remembers the BBC programme 'Lovejoy' you'll remember he called it 'having the divvy' from the word divine (aka the divine power to spot something good!) Every now and then, that gut instinct kicks in. Its an unexplainable phenomenon in the auctioneering world!

A client had decided to sell some items with us, one of which was a 19th Century Peg Doll. These are dolls – usually Dutch in origin – made crudely from wood, with small wooden 'pegs' in their arms and legs to aid movement (hence their name). They're fairly sought after, but not all that rare to see - we sell an average of five or six a year. But there was something special about this doll, that I couldn't quite put my finger on.

The average price for a 19th Century peg doll is around the fifty to one hundred pounds mark. But this one was much bigger than usual, and slightly better made than I've previously seen. After some research online it appeared to be worth not much more than usual. But I couldn't let it go – there was something special about it. We placed it in auction with a much higher-than-usual estimate of four hundred to six hundred pounds. In the two weeks leading up to the sale when the catalogue was online, we had no interest - no calls, no emails, no advance bids and it was looking like my gut had lead me in the wrong direction.

Sale day comes, and the lot goes under the hammer. It takes a bid at its low estimate – four hundred pounds – a nice result, and its pleasing to see. But then it starts getting more bids. A few moments later its rising towards a thousand pounds. Then two thousand pounds. Eventually, it sold to an online bidder for three thousand pounds!

The old adage is true – always trust your gut!

Andy Stowe, Auctioneum

■ KINGSWOOD HISTORY SOCIETY

Motor Bus Serving Bristol by Dr Mike Walker – 7th April 2026

Mike gave a great presentation about what some would consider, the Bristol buses being the best in the world.

A timeline from 1900 was shown and discussed; the key years of interest maybe;

- 1900 – The first Bristol bus being a Daimler Wagonette.
- 1908 – First Bristol bus build.
- 1919 – Bence Motor Services based in Hanham and Longwell Green founded.
- 1921 – Greyhound Motors formed in Bristol
- 1945 – Change of colour to Tilling Green from Blue and White.
- 1949 – Introduction of Lodekka
- 1957 – Formation of the Bristol Omnibus Company
- 1958 – Bristol Bus Station completed
- 1963 – Probable peak of 500 city buses (excludes country buses). Now more like 230.
- 1984 – End of bus conductors.
- 1986 – Badgerline and Cityline formed.
- 1995 – Firstbus formed from Badgerline and Grampian Regional Transport.
- 2018 -23 – Metrobus.
- 2025 – Electric buses.

The talk was completed showing many examples of the several types of bus throughout the years in various locations around Bristol. Questions were then taken.

Someone told me at the talk that on a full City Dart bus in Kingswood, on the hills you might expect to get out and meet the bus at the top!

Next meeting at the Park Centre, Kingswood is Tuesday 5th May, 7pm for 7,30pm start. Visitors £4 incl tea/coffee and biscuits. Full schedule of presentations can be found at www.kingswoodhistorysociety.org



Hanham Community Centre.
118-124 High Street.
Hanham BS15 3EJ.
Saturday: 9.00am
Tel: Izzy 07824 365101

Longwell Green Community Centre, Shellards Road
Longwell Green BS30 9DU
Monday: 6.00pm & 7.30pm
Tuesday: 9.30am
Tel: Karen 07889 408969

North Common Village Hall,
16 Millers Dr, North Common
BS30 8XX
Tuesday: 6.00pm & 7.30pm
Tel: Emma 07773 689229

AUCTIONEUM
BRISTOL & BATH AUCTIONEERS
FORMERLY EAST BRISTOL AUCTIONS LTD

T: 0117 967 1000
E: info@auctioneum.co.uk
www.auctioneum.co.uk

Auctioneum, 1 Hanham Business Park,
Memorial Road, Hanham, Bristol BS15 3JE

NEWS

NHS pulls plug on community hospital

A COMMUNITY hospital promised for Frenchay for more than 20 years has been scrapped.

The NHS body in charge of funding services in the region says there is “no longer a need” to build an in-patient rehabilitation unit on a part of the former acute hospital site reserved for the project, because it will instead focus on helping patients recover in their own homes, in line with changes in national policy.

It comes a few months after the Bristol, North Somerset and South Gloucestershire Integrated Care Board (ICB) told the Voice there was no money available to take the project forward.

The site could now be sold off by North Bristol NHS Trust, to raise money to spend elsewhere.

News of the decision to abandon the plan for rehabn beds was contained in a report to April’s meeting of South Gloucestershire Council’s health overview and scrutiny committee, titled “Next steps for Frenchay Hospital site”.

It said: “National NHS policy now prioritises neighbourhood-based, home-first rehabilitation, supported by multidisciplinary teams. This represents a significant change from the assumptions that underpinned earlier plans for a bedded rehabilitation facility.

“Existing facilities are adequate, and South Glos has a high share of beds – current provision in Thornbury and Yate is suitable and appropriately staffed. In addition, building a new site is also not financially viable or a capital funding priority.”

The ICB said South Glos already has more rehabilitation beds per head of population than other parts of the region.

ICB chief delivery officer David Jarrett told the meeting the body had “no other commissioning intentions” for the land, which would enable NBT to consider options “including the potential opportunity to generate further

capital funds for use on funding further capital priorities”.

Barbara Harris of the Save Frenchay Community Hospital Group has been campaigning for a new community hospital for more than 20 years. One was first agreed in 2005, as part of a plan to move all North Bristol NHS Trust acute hospital services onto one site, with an upgraded hospital built at Southmead.

But by the time the new Southmead Hospital opened and the old Frenchay Hospital closed in 2014, funding for a Frenchay community hospital, with 112 rehabilitation and mental health beds, had already been cancelled. Plans were later revived for a 50-bed facility, but nothing happened.

Mrs Harris said: “Since 2005 the plan for Frenchay has been started and stopped five times, but there is no denying the need for the rehabilitation bedded unit when Southmead Hospital beds are either a quarter or a third full of ‘bed-blockers’ – patients who

have had their acute treatment but who now need further rehabilitation treatment in a proper rehabilitation facility.

Mrs Harris said campaigners were calling on the new Bristol Hospital Group, being formed by the merger of the city’s two hospital trusts, to at last begin to implement the plan for a community rehabilitation hospital on the site reserved for it, “so that patients can receive the rehabilitation care they deserve”.

ICB chief executive Shane Devlin told the Voice: “We recognise how strongly many people feel about the future of the Frenchay site and understand that this will be disappointing news for some.

“Over the past decade, the way rehabilitation is delivered has evolved significantly.

“In light of this, we do not believe that developing a rehabilitation facility on the Frenchay site would represent the best use of NHS resources.”

G25 INSTALLER OF THE YEAR!

WINNERS!

G25
AWARDS
WINNER



THE WINDOW HUB.co.uk

Upgrade your
windows & doors
with the
UK's #1
installer!

Get in-touch today for a FREE no obligation quotation **08000 219 319**

Come visit our showrooms

72-74 High Street, Bristol BS16 5HN 208 Topsham Rd, Exeter EX2 6AA

info@thewindowhub.co.uk www.thewindowhub.co.uk



NEWS

MORE than three and a half years after Cossham Birth Centre in Kingswood announced a temporary closure, there is no date for its reopening.

A decision on its future looks set to be further delayed while health chiefs work out how to bring together hospital services across Bristol.

North Bristol NHS Trust continues to run antenatal and postnatal services at the unit and says it offers “continuity throughout every stage of the maternity journey” – but no babies have been born at Cossham Hospital since October 2022.

The birth centre proved popular with prospective parents from east Bristol after it was opened by NBT in 2013, but it had to shut for spells in 2018 and 2021 because of a shortage of midwives.

Staffing challenges at NBT’s maternity unit at Southmead Hospital were also given as the

Birth centre remains closed

reason for the latest closure.

NBT’s website states: “May 2024: While we have made progress in recruitment, maternity workforce challenges remain across the NHS and regrettably we are not yet in a position to reopen the Cossham Birth Centre for births. Work remains ongoing and we will update further as soon as possible.”

MPs Kerry McCarthy and Damien Egan called two years ago for the birth centre to reopen, saying: “It is not right that, following a multi-million refurbishment, the centre has been forced to close its doors for more than a quarter of the time since.

“Expectant parents are being forced to travel many miles further to the nearest birth centre and would like certainty

when Cossham Birth Centre might reopen.”

Since then, however, NBT and University Hospitals Bristol and Weston NHS Foundation Trust have begun working towards a merger as Bristol NHS Group, which is expected to be finalised this summer.

Services that are provided by both trusts such as maternity – offered at St Michael’s Hospital by UHBW and at Southmead and Cossham by NBT – are being integrated in what the trusts call Group Clinical Services development.

Professor Steve Hams, chief nursing and improvement officer for Bristol NHS Group, told the Voice: “Cossham Birth Centre remains an integral part of our long-term vision for women’s health – including as part of our Group Clinical Services

development – ensuring the very best care and experience possible for those using our service.

“We provide a range of services at Cossham, including community appointments, breastfeeding support, and both antenatal and postnatal care, ensuring compassionate guidance and continuity throughout every stage of the maternity journey.

“Women continue to have access to a range of birth options, including midwife-led care alongside obstetric support at Southmead Hospital, as well as a dedicated home birth service. These choices are all underpinned by our unwavering commitment to personalised, high-quality, safe care for women using our services.”

Flag row: Page 19

THE VOICE KEEPS YOU UP TO DATE WITH WHAT'S HAPPENING IN OUR AREA

Hanham Common Fayre 2026

9th May Midday until 4pm, Common Road, Hanham

Balloon Modelling Refreshments Car boot sale Stalls
 Fun dog show Barbecue Vintage car display Punch & Judy
 Children's rides Home made cakes Brass Band Dance displays

Car parking 50p proceeds to Air Cadets

Further Information: Telephone: 0749 333 2388 Email: clerk@hanhamabbots-pc.gov.uk

Organised by Hanham Abbots PARISH COUNCIL

Loft Boarding & Insulation



www.useyourloftspace.co.uk

USE YOUR LOFT SPACE is the reliable, affordable and trusted local company for all your loft boarding, and loft insulation requirements



0117 2980810

USE YOUR LOFT SPACE

INFO@USEYOURLOFTSPACE.CO.UK

PUZZLES

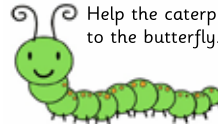
Sudoku

Each row, column and square (9 spaces each) needs to be filled out with the numbers 1-9, without repeating any numbers within the row, column or square.

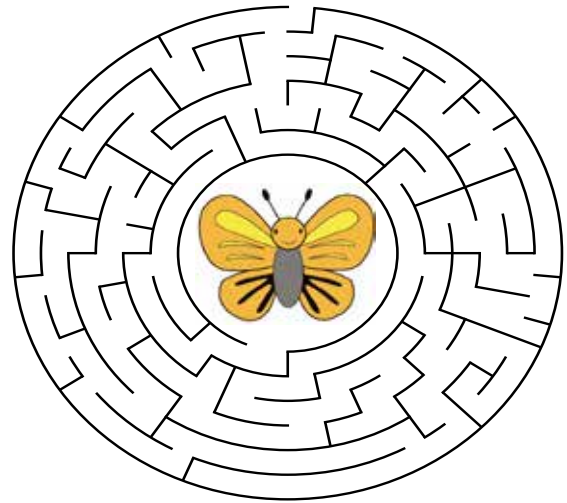
	2					3		
		5			7		9	
	4		5		3		7	2
		6		1	8		2	
4						9		
				9	2			3
			6		9	7	5	
8								1

For younger readers

Caterpillar Maze



Help the caterpillar find their way through the maze to the butterfly.



© www.ActivityVillage.co.uk - Keeping Kids Busy



Txtpert

Theme: Capital cities

1				2			3
4		5					
				6	7		
8							
9							

Use the phone keypad to decode the clues.
For example: 2 could be A, B or C... and 5678 could be LOST

1	2	3
0,0	abc	def
4	5	6
ghi	jkl	mno
7	8	9
pqrs	tuv	wxyz

Across

- 1 54647866 (8)
- 4 66676842 (8)
- 6 5663 (4)
- 8 5462 (4)
- 9 926466 (6)

Down

- 1 5267252 (7)
- 2 73685 (5)
- 3 642639 (6)
- 5 668632 (6)
- 7 6756 (4)

Easier sudoku

Rules the same as the Fiend, but only four numbers in each box, row and column

		1	
	4		
2			1
		2	

Solutions

Txtpert

	N	O	D	N	V	A	6
		T			E		V
A	S		V	W	I	T	8
E	W	O	T	U		V	
W		U		O		D	
V	I	A	O	R	N	S	O
I			E			V	
N	O	T	S	D	N	I	K



Could you be a support worker?

United Response is national charity, employing over 3,500 people across the country to provide outstanding support for people with learning disabilities and autism.

We're looking for new support workers in **Bristol** for our supported living services. You'll need full UK driving licence, but we'll provide all the training you need – just bring the smile!

www.unitedresponse-jobs.org.uk



For more info, contact kat.dingle@unitedresponse.org.uk

Registered charity no. 265249

NEWS

Row as flag stops flying at hospital

VOLUNTEERS who raise money to support the work of Cossham Hospital say they have been stopped from flying the Union flag - on a pole they paid for.

The League of Friends of Cossham Hospital fundraise to pay for equipment for the hospital in Lodge Road, Kingswood, which provides outpatient services for thousands of people across South Gloucestershire and East Bristol.

The group paid for the pole to be erected on the hospital's roof following a major refurbishment that was completed in 2013, and says flags have been flown at the site for 60 years.

The volunteers allowed patients, visitors and other supporters to have the Union flag flown with a corresponding dedication posted at the hospital's reception, marking anniversaries, birthdays, memorials and other personal events, in return for a £5 donation.

League of Friends chair Margaret Nolder says the flag sponsorship has raised more than £1,100 for the hospital over the past six years.

But when the rope used to raise and lower the flag broke over the winter they were told by North Bristol NHS Trust that it could not be replaced on safety grounds.

And when Margaret put up a flag in the



The Union flag flying on top of Cossham Hospital in August last year

window of the cafe run by the League of Friends, as a substitute, she says she was told to take it down by management.

Margaret says she was told a patient and a staff member had complained - but says many visitors, patients and staff are "up in arms" that the flag isn't flying.

She said: "We paid for the pole and it's such a landmark - it's the highest point in Bristol.

"We're non-political and the flag is used to celebrate or remember people.

"If there's a problem with health and safety on the roof we're prepared to pay to have a new flagpole installed on the ground.

"I've now been sent a memo saying the flag can only be flown on the monarch's birthday,

state funerals or Remembrance Day.

"It's political correctness - there's never been any complaints before."

The group, which has 68 volunteers, has spent more than £200,000 on equipment for the hospital over the past eight years, also raising money through its cafe, Christmas sales, donations and legacies.

Bristol North East Damien Egan MP, whose constituency includes the hospital, has written to the trust to raise the League's concerns.

A trust spokesperson said: "We hugely appreciate the ongoing hard work, dedication and support Cossham League of Friends and their volunteers provide to Cossham Hospital and our patients and colleagues.

"Serious safety concerns around accessing the existing flagpole, which is located on the roof of Cossham Hospital, mean that it is no longer suitable for use.

"At NBT we have a protocol that outlines the occasions on which we display flags on our hospital flag poles.

"We recognise the long history of Cossham League of Friends using the flagpole outside of official occasions as part of fundraising efforts and are working closely with the group on how we continue to mark this tradition whilst ensuring the safety of our colleagues and their volunteers."

24 HOUR LOCKSMITH & DOUBLE GLAZING REPAIRS

Dale Clements

24 hour Locksmith Service (all types of doors)
 Locks, Handles and Hinges Repaired
 Misted and Broken Glass Replaced
 Realign Dropped Doors and Windows

0117 3690046
 Mobile: 07970 019830

Which? Trusted trader
 VISA
 MasterCard

**NO CALL OUT FEE
 FIXED PRICES**

www.daleclements.co.uk
 44 ABBOTS ROAD, HANHAM, BS15 3NG

TRADING FOR OVER 10 YEARS

ELM LEGAL SERVICES

WE TAKE THE DRAMA OUT OF MAKING A WILL.

- Will Writing**
Meet with a local professional and receive full guidance and support.
- Family & Property Trusts**
Ensure your loved ones receive the maximum benefit by protecting your estate with trusts.
- Lasting Powers of Attorney**
Give someone the power to make decisions on your behalf, no matter what happens.
- Probate Services**
Our specialists help make a difficult time as stress-free and straightforward as possible.

Contact us today
0117 952 0698

feefo
 Platinum Trusted Service
 4.8 Star Rating

elm-online.co.uk
 765 Fishponds Road, Bristol, BS16 3BS

NEWS FROM THE METRO MAYOR

A year of progress

A YEAR on from being elected as your Mayor, I've been reflecting on what we've achieved together and what comes next for the West of England.

From day one, I said I wanted to do things differently. That has meant focusing on the things that matter most to people, while also laying the foundations for the future.

We've made a strong start: you will have noticed the West Country's voice growing louder during the last 12 months, as we continue catching up with other places and securing more investment for the country's fastest-growing regional economy.

We've secured a record-breaking £752 million to improve transport, including better buses, more reliable journeys and exciting mass transit plans for the future.

That's on top of investment which will soon see 250 new electric buses serve routes across the West, helping make more journeys cleaner and more comfortable.

We've continued to invest in rail too, with work on new and improved stations, including Bristol Brabazon and Charfield.

The Bristol & Portishead Line has received the green light, with work well underway, and half-hourly services are being protected.

The launch of our Kids Go Free scheme has helped families right across the West, with more than 910,000 free journeys taken last summer

alone, with the offer returning over the Christmas and Easter holidays.

It's been especially positive to see the difference it's making in communities where it matters most. The latest data shows that, in areas where families have some of the lowest incomes in the country, children's bus travel has doubled.

Alongside this, we've frozen the £1 child bus fare cap until 2029 and extended free bus travel for care leavers, helping young people and families with the cost of getting around.

While transport is at the heart of much that we do regionally, it's only part of the picture.

In September, we launched an ambitious Growth Strategy, with plans to create 70,000 new jobs over the next decade, backed by a new Business Board to help attract investment and support local businesses.

Our creative industries will benefit from £25m of new funding to help support jobs, skills, and opportunities in one of our fastest-growing sectors.

We've also made progress towards North Somerset joining the combined authority, with the majority of responses in a recent consultation showing that people and businesses support the move.

For communities, we've secured £45m to unlock new affordable homes, set out plans for a new regional hub bringing together charities to provide food and essential items to people who need it



Metro Mayor Helen Godwin
writes for the Voice

most, and continued investment in our parks, high streets, walking, cycling and green spaces. We're also supporting nature and tree planting through the Western Forest, helping to make our region greener for the future.

We are also supporting the development of Brabazon and the West Innovation Arc, with the potential for the area around the upcoming Aviva Arena to become one of the UK's most significant new towns.

We've made real progress in our first year.

I'm determined to keep building on this momentum, working together to make the West of England the best place to live, work, study, and raise a family.



*A family run business for over
85 years, supplying and fitting
quality flooring in the Bristol
and surrounding areas*

NOW AT UNIT 1, DRAGON COURT, BS5 7XX

JUST 2 MINS AWAY FROM OUR PREVIOUS ADDRESS

- Massive choice of quality carpets, vinyl, laminate and LVT
- Fitting service available with expert fitters
- FREE measuring & planning service ■ FREE parking
- FREE NO obligation estimates ■ FREE sample service
- Trade enquiries welcome ■ Delivery service available

(Charges apply)

Opening hours: Mon - Sat 9am - 5pm Sunday / Bank Holidays CLOSED



10% OFF
selected lines
until 31st May

Please ask one of our experienced team for details: **Unit 1 Dragon Court, Crofts End Road, Fishponds, Bristol BS5 7XX** Telephone: (0117) 985 0548
web: www.bristolcarpetco.co.uk email: sales.bristolcarpet@gmail.com
WhatsApp: 07572 285803 facebook: @Bristolcarpetco instagram: @Bristolcarpet

Sign up for
exclusive
offers



NEWS

Demand better buses

RESIDENTS are being urged to have their say in a consultation which could shape the future of the region's bus services.

A consultation on the West of England Combined Authority's new Bus Plan runs until May 10, and is being promoted as "a chance for everyone in the West to help shape improvements across the region".

Metro Mayor Helen Godwin, who launched the consultation, said: "We want to help more people across our region to get home sooner, get out into nature more, and explore the best the West has to offer, rather than being stuck waiting for a bus or in traffic."

"Residents, businesses, bus users, and people who don't get the bus too, can have their say about what matters most, to help shape improvements for our buses, as we build a transport network that people can trust."

National research by the Urban Transport Group recently found that bus passenger numbers in the West of England grew by the second fastest rate in the country between 2024 and 2025 - with a 6 per cent rise, compared to the English average increase of 1 per cent.

People can have a say online at haveyoursaywest.co.uk/betterbuses, or you can call 0117 428 6210 or write to FREEPOST West of England Combined Authority.

The survey is running as South Gloucestershire Council's cabinet member for infrastructure Chris Willmore warns that Donald Trump's war with Iran is 'messing up' the future of bus services in the region.

Cllr Willmore told a cabinet meeting in April that the surge in fuel prices caused by the Middle East war was coming as bus operators were bidding for routes subsidised by the WECA, which means the cost of keeping supported bus services on the road will also be higher.

• More than half of the public supports North Somerset joining WECA, a consultation found. Adding the area to the mayoral group of councils was backed by 56.7% of the 1,273 who responded, with 37.6% against.

LETTER

Cutting buses makes no sense

ONCE again, Oldland Common is losing more bus services. For some unknown reason, the No 42 bus will not be using North Street anymore.

With the total loss of the %£@ service between Emersons Green and Cadbury Heath there will be no buses at all in North Street!

The 532 was not used enough simply because it stretched too far, and was only every 3 hours. It was our only way to get to our nearest shops in Longwell Green.

I used it, but I had to get the 9.45 am bus to Longwell Green by 10.15 to meet friends at The Harvester at midday

Then we had to rush out at 1.30 pm for the only bus home for 3 hours.

I did suggest running a more frequent service 3 days a week, so the buses could be used for two 'country routes', but no-one listens. The route needs to be a smaller circular route covering

North Common, Oldland, Bitton and preferably Keynsham (as it did 10 years ago), Longwell Green and Aspects Leisyre Centre, so it could be more frequent. I didn't see anyone getting on or off the bus at Pucklechurch when we went to Emersons Green for 3 hours! This would also cancel the need for the new ludicrous idea for alternate 42 services to go to Keynsham.

The new plan means everyone in the North Street/High Street area will have to walk all the way to Westcourt Drive or Barry Road to get a number 42 bus. Also the 19 service has been cut to hourly instead of every 30 minutes. People in the Park Road area can no longer access the surgery in North Common on the 42 bus, and they now have to walk to Cadbury Heath to get a bus to town!

We need more people to use more buses more often, and the new plan achieves the exact opposite. More and more houses, and less and less bus services just doesn't make sense.

Margaret, Oldland

SOMETHING TO SAY? WRITE TO US:
news@hanhamandlongwellgreenvoice.co.uk

Tileflair
NEW SHOWROOM
 TOWER LANE, WARMLEY, BS30 8XT
OPEN EVERY DAY
 WIDE SELECTION OF PORCELAIN AND CERAMIC TILES
 INDOOR & OUTDOOR TILE COLLECTIONS



SHOW THIS ADVERT IN STORE AND GET 10% OFF*

WWW.TILEFLAIR.CO.UK

* Offer valid in store only. Usual T & Cs apply. Offer not valid in conjunction with any other offer or discount. Must be redeemed by 30/09/2026.



Let's Talk Dementia

A one stop event for families to learn more about dementia.

📍 Bristol Beacon BS1 5AR

📅 Saturday 23rd May 2026
Join us anytime: 10.30 am - 4.30 pm

Free Tickets

tinyurl.com/VoiceLTD



NATURE WATCH with Dawn Lawrence

Marvel at the annual miracle of migration

THIS month spring is at the height of its powers and all our summer migrants have returned. The dawn chorus is playing fortissimo even here in the city with enthusiastic blackcaps and chiffchaffs joining our resident birds such as the sweetly tuneful blackbirds and the cooing wooing wood pigeons. But I will also be listening out for house martins. There is still (I hope) a sizeable colony just off Redland Road but the small colony on Berkeley Road has been empty for the past two summers – a loss which is hard to bear and we still hope for their return.

The house martin is a smaller, plumper relative of the swallow; dark above with an obvious white rump and all pale below, with forked tail lacking the flamboyant streamers of the swallow. House martins, like swallows, build nests of mud, collected and manipulated by beak alone, which they construct under the eaves of our houses and other buildings. Unlike the swallows, they are not shy of nesting in the middle of a city (swallows prefer rural areas, stables being a favourite option). Martins and swallows are not related to swifts – those all-black birds that shriek and arrow across our summer skies. More about swifts another day but please be aware of their need



A house martin in flight Photo by Mark Kilner

to access their nest holes in and around our roofs if you are having building work done.

It was a baby swallow ringed in Staffordshire in 1911 that solved the mystery of migration. Up until this ringing recovery the suggestion that our summer visitors overwinter in Africa was still too incredible for some to believe. Ringing – the placing of a light ring on a bird's leg with return details – had only begun to be organised in May 1909 but in 1912 the Staffordshire ring was returned from Natal

in South Africa over 6,000 miles away. Taken from a living bird that had become trapped in a farmhouse, it proved that the delicate swallow, a mere 20g spoonful, had made that astonishing journey. Imagine being the scientist to open that particular letter!

It is almost more surprising that over 100 years later we have still not discovered the parts of Africa where our house martins spend the winter although we know they are there somewhere. Now that they have returned we have the summer to enjoy their delicate chirruping song, often delivered from a perch such as a telephone wire, and their amiable chatter as they hunt for insects over our gardens. They need us more than ever and small artificial nest cups can be fixed under sheltering eaves to help them out. As with swift nest boxes, the more you can place together the better, because house martins are colonial nesters. By avoiding pesticides, providing long grass, fruit trees and native wildflowers you will encourage the insects that house martins need to raise, typically, two broods of around five chicks each. That's a lot of insects required!

© Dawn Lawrence

Trusted, reliable care, for you and your loved ones.



"They have an experienced, caring team that far exceeds in quality anything we have experienced from other agencies at this point of service."

Steve, Client

As well as hourly visits, we also offer a live-in care service with 24/7 support to help people live longer in the homes they love.

- We can help with
- tasks around the home
 - meal preparation & tidy away
 - medication support & collecting prescriptions
 - companionship & activities to stimulate the mind & body
 - shopping & delivery
 - personal care
 - specialist dementia support



For more information or a chat about our service please call 0117 374 2400 or visit www.homeinstead.co.uk/bristol-east

■ MESSAGE FROM POLICE AND CRIME COMMISSIONER

Antisocial behaviour: don't suffer in silence

ANTISOCIAL behaviour is one of the issues people speak to me about most often.

Whether it's persistent noise, groups causing concern in town centres, or behaviour that makes people feel intimidated, it can have a profound and lasting effect.

Antisocial behaviour doesn't just cause inconvenience - it can erode people's confidence in their neighbourhoods and undermine their sense of safety. That is why tackling antisocial behaviour is one of my priorities, and it is a priority shared across our public services.

I work consistently with the constabulary to deliver against the national neighbourhood policing guarantee. As a result, Avon & Somerset police have launched their new Five-Year ASB Plan, a strategy that focuses on prevention, early intervention and the right action

against the small number of people whose behaviour repeatedly harms others.

The plan strengthens partnership working, improves how vulnerable victims are identified, and places greater emphasis on understanding community concerns.

Good intelligence sits at the heart of this: reports from you as residents, insights from neighbourhood officers who know their areas well, and the information shared by partner organisations all help build a clear picture of where problems are happening and what targeted action is needed.

As an example, we have seen the value of this approach in Weston-super-Mare. Persistent antisocial behaviour in the town centre had left too many people feeling unsafe.

By bringing together council teams, voluntary organisations,

specialist support services and neighbourhood officers, we have been able to make a tangible difference.

A visible presence, targeted support for vulnerable individuals, and practical tools such as CCTV, street wardens and problem solving patrols have helped reduce the most harmful behaviour and reassure the local community.

It shows what is possible when everyone plays their part and when we listen directly to the people affected.

For anyone experiencing antisocial behaviour, knowing where to turn is vital.

Reporting it really does help. Even small or repeated incidents add to the intelligence picture and lead to better responses.

If you prefer to stay anonymous, you can contact Crimestoppers on 0800 555 111.

If issues persist and you feel not



With Police and Crime Commissioner Clare Moody

enough has been done, you can request an antisocial behaviour case review through your local council.

This brings agencies together to look again at what more can be done to resolve the problem.

Victim support must always remain at the centre of our response.

I fund the Avon and Somerset Victim Service partnership, which provides free, confidential help to anyone affected by crime or antisocial behaviour, regardless of whether they have reported.

You can contact ASVS on 0300 303 1972 or go to victimsupport.org.uk/avon-somerset to find out more.

You're never fostering alone.

- Someone to lean on.
- Friendships that feel like family.
- Growing confidence together.
- Breaks that make a difference.

We're fostering a community that feels like family with the award-winning Mockingbird in South Gloucestershire.

Join a fostering community that connects you, supports you and grows with you.

Start your fostering journey today.

fostersouthglos.org.uk
 01454 866 423 foster@southglos.gov.uk



NOSTALGIA

The Lock Keeper, Keynsham Road, Keynsham (formerly the Ile d'Avon, The White Hart, and Bridge House)

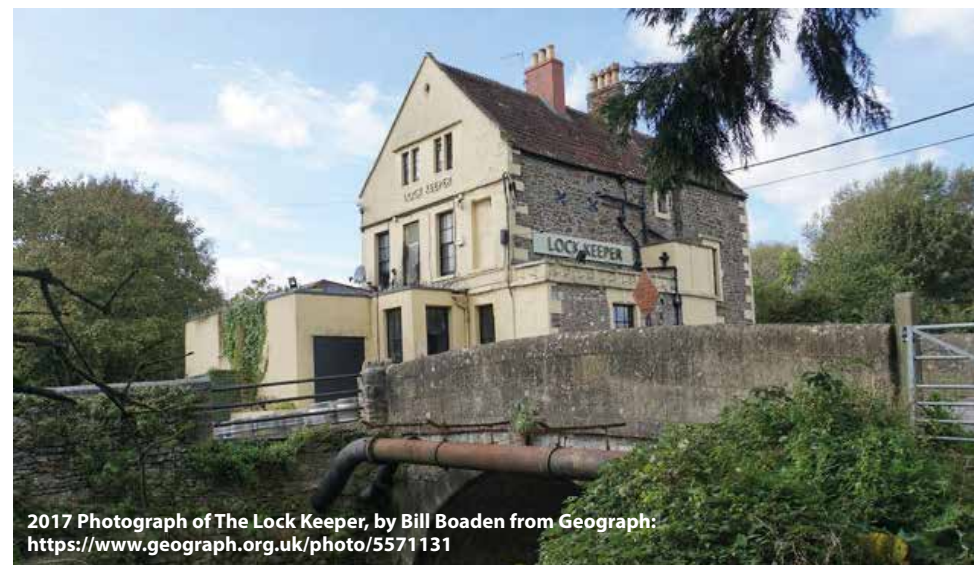
by Julie Johns

The pub now known as The Lock Keeper stands on the South Gloucestershire side of the River Avon and has a long and complex history stretching back at least to the early 18th century. According to local sources, a building existed on the site by 1719, though some suggest it may date from around 1678 and could even have served as a guard post during the Monmouth Rebellion of 1685.

Originally a private house, the property is believed to have evolved into a public house when its occupant began brewing ale and offering hospitality to barge workers travelling between Bristol and Bath. Its riverside location made it a natural stopping point, and it became known as the Bridge House or Keynsham Bridge House in early records.

By 1833, the property was occupied by George Burgess, a former hatter whose family had connections with local industry and alehouses. His daughter Sarah later married Henry Creswicke of Hanham Court, a once-prominent but then declining family. The Burgesses themselves appear to have been relatively prosperous, with interests in both brewing and manufacturing.

During the mid-19th century, the pub became known as the White Hart. In 1861 it was run by Joseph and Susannah Shellard, who had previously managed the Queen's Head in nearby Willsbridge. The Shellard family maintained a strong association with the pub for decades,



2017 Photograph of The Lock Keeper, by Bill Boaden from Geograph:
<https://www.geograph.org.uk/photo/5571131>

though often as owners rather than resident landlords. Following Susannah's death, Joseph remarried and later left the premises.

Like many riverside inns, the White Hart was frequently associated with local inquests, particularly those involving drownings in the Avon. The fast-flowing river posed constant dangers, and several tragic incidents were recorded, including a fatal boating accident in 1879 involving local workers.

Over the late 19th century, the pub saw a succession of landlords, including George Crease, William Toombs, and Jacob Cradock. Ownership appears to have remained

with Joseph Shellard until his death in 1893, after which the property was auctioned. By the 1890s, Rhoda Symes, a widow, became landlady. Her tenure was marked by personal tragedy when her son drowned in the river in 1910 while attempting to secure boats during flooding.

In the early 20th century, licensing restrictions reduced opening hours, and the pub adapted to changing social conditions. It continued to serve locals and visitors, including anglers who frequented the river. Ownership later passed to Ashton Gate Brewery and subsequently to George's Brewery in the early 1930s.

The interwar period brought further change. Percy Saunders, landlord from the late 1920s to mid-1930s, combined running the pub with a motor repair business. In 1930, the pub faced possible closure on the grounds of redundancy, but its licence was renewed after evidence of regular use by diners and visitors. A notable incident occurred in 1933 when a car plunged into the river from the nearby bridge, resulting in a fatality.

By the mid-20th century, the White Hart remained a popular local

venue, hosting social gatherings such as motor club meetings and angling events. In the 1960s it was run by William Dann, followed later by Fred Harding, who was locally remembered for cutting hair in the bar.

A major turning point came in July 1968, when severe flooding washed away the county bridge linking Keynsham and Bitton. This tragedy isolated communities and altered access to the pub until a replacement crossing was built.

In the 1970s, the building briefly became Barges nightclub, and by the early 1980s it had been converted into a restaurant called the Ile d'Avon. Eventually, it returned to its traditional role as a pub and is now known as The Lock Keeper.

Despite over 300 years of history and numerous changes in name, ownership, and function, the building remains an enduring feature of the riverside landscape.

Julie Johns, 2026

For a full version of Julie's article with a lot more information and photos please visit: Full Article



1887 O.S. map, reproduced with the permission of the National Library of Scotland



The original bridge pre-1968 floods. Photo courtesy of Bob Bruton



DOUGLAS MOTORCYCLES

The Douglas Engineering Company was established in Kingswood by in 1882The brothers William and Edwin Douglas, who moved from Kelso, Lanarkshire, in 1882. Initially doing blacksmith work, they progressed to foundry work.

Joseph F. Barter's Light Motors Ltd. manufactured motorcycles in the early 1900s. Douglas made castings for Light Motors, and took over the manufacturing rights when Light Motors went out of business in 1907.

Douglas manufactured motorcycles from 1907 to 1957 and was a major employer in the Kingswood area. The company was especially known for its horizontally opposed twin cylinder engine motorcycles, and as manufacturers of speedway machines. The company also built a range of cars between 1913 and 1922.

During World War I Douglas was a major motorcycle supplier, making around 70,000 motorcycles for military use. In the 1920s Douglas built the first disc brakes, and had a Royal Warrant for the supply of motorcycles to the Princes, Albert and Henry.

Douglas continued motorcycle production in World War II, and also produced engines for generators. In 1948, shortly after the war, Douglas ran into financial difficulties, and reduced its output.



The 1955 350 cc Douglas Dragonfly was the last model made.

The Westinghouse Brake and Signal Company Ltd bought Douglas out, and production of Douglas Motorcycles ended in 1957. As a subsidiary of Westinghouse Brake and Signal Co., the company employed approximately 2,000 people and continued to import Vespa scooters into the UK, as well as importing and assembling Gilera motorcycles.

Kingswood Heritage Museum has an exhibition gallery dedicated to Douglas motorcycles, a part of which is featured in the photograph on the left. The other photograph shows the start of one of the Douglas Cavalcades that is hosted annually by the Museum, and takes place this year on Sunday 24th May. Further details of this year's Cavalcade can be found on the Museum's website: www.kingswoodmuseum.org.uk

We are open again for the new season

Kingswood Heritage Museum is now open until the end of November from 2 – 5pm every Saturday, Sunday and Tuesday, and from 11am to 5pm on Bank Holidays.

We will be open from 11 am to 5 pm over the early May Bank Holiday weekend: Saturday 2nd, Sunday 3rd and Monday 4th May. We will also open from 11am to 5pm over the Spring Bank Holiday weekend: Saturday 23rd, Sunday 24th and Monday 25th May. The Gardens and Grottoes will be open on the Spring Bank Holiday Sunday and Monday from 11am to 4pm

Douglas Cavalcade

The annual Douglas Cavalcade is a regular feature of the Spring Bank Holiday. This year's Cavalcade takes place on Sunday 24th May, when dozens of vintage motorcycles will move off at 12 noon to ride the old factory test route.

Museum Talk: "The Women who Built Bristol"

The next talk at the Museum is on Wednesday 13h May, when Jane Duffus will tell the story of "The Women who Built Bristol"

Admission costs £4.50, including tea or coffee; doors open at 6.45 pm and the talk commences at 7.30 pm; Seats must be booked in advance via **0117 9605664**, or by email: kingswoodmuseum@gmail.com.

Knit and Natter Group

The Museum hosts a popular Knit and Natter group on the first and third Wednesday each month, from 2pm to 4pm. Bring your own knitting, crochet, embroidery, etc., and enjoy a natter with like minded friends.

Entry fee: £3 (which goes to the Museum). For further details please contact the Museum on **0117 9605664**, email us at kingswoodmuseum@gmail.com, or just come along to join us.

Volunteer with us

Kingswood Heritage Museum is run entirely by volunteers. If you're interested in history and can spare some time to help us to conserve and display the history of our area, please do get in touch!

Whatever skills you can offer, Kingswood Heritage Museum would like to hear from you. To join our enthusiastic and friendly group of volunteers either email us at kingswoodmuseum@gmail.com, or simply call us on **0117 9605664**. We would love to hear from you!

SPORT

Sport unites schools and teaches skills

MORE than 200 children from 13 schools, including Bristol Brunel Academy in Speedwell, took part in a day of rugby-related activities to encourage more young people to take up the sport.

The T1 MegaFest was held at the Bristol Bears High Performance Centre in Failand in April.

Organised in partnership between the Premiership club and Cabot Learning Federation, it gave pupils the chance to play on an indoor pitch used by the club's professionals.

Bristol Bears men's and women's players including AJ MacGinty, Sam Worsley, Joe Owen, Matias Moroni, Rownita Marston-Mulhearn, Demelza Short, Jenna De Vera, Meryl Smith and Jenny Hesketh took part in games, and offered advice and guidance to the young players, as well as taking time to sign autographs.



Some of the CLF pupils at the T1 MegaFest

The festival was divided into two competitive sessions, with a primary school event in the morning followed by a secondary school competition in the afternoon.

A team of "sports leaders" from City Academy in Redfield led a series of activities for primary pupils and refereed the secondary T1 festival.

The festival promoted the Rugby Football Union's T1 non-contact format of the game for schools and clubs, which retains key aspects of tag rugby but also allows for other elements from the sport, including kicking and uncontested scrums, to be introduced.

It included game-based activities designed to develop

sports and movement skills, build confidence and improve social skills such as teamwork and communication.

Participants were recognised for personal and social attributes, as well as strong rugby skills.

CLF and Bristol Bears Foundation secondary school engagement co-ordinator Theresa Bickell said: "We were incredibly proud to see so many young people come together to enjoy rugby in such a positive and inclusive environment.

"The T1 format is a fantastic way to introduce the game, allowing every child to develop skills, confidence, and a love for rugby."

Bristol Bears chief executive Tom Tainton said: "Events like this really showcase what our partnership with the Cabot Learning Federation is all about – creating opportunities, building confidence, and using sport to engage and connect."

LOOKING FOR LEGAL ADVICE?

We offer you friendly, professional expert advice

Your **LOCAL** Solicitors offer you friendly professional expert advice

FLEXIBLE TIMES FOR APPOINTMENTS

- Family Law - Divorce & Separation
- Child matters
- Employment Law
- Litigation & Legal Disputes

FREE 30 MINUTE INITIAL MEETING

CONTACT US TODAY

0333 320 8600

www.bevanevemy.co.uk



Meet the team

Bevan Evemy Solicitors

Tina
Bennett

Lynn
Bevan



Celebrating 40 years of Care
Trust us to help you
Stay independent at home with a live-in carer



More affordable than a Care Home

We believe in only the very best care
Providing live-in care since 1986

Call for a brochure today or a free assessment
Freephone 0800 111 4885 / 0117 9860710

Email: featherbed@featherbedhomecare.co.uk
www.featherbedhomecare.co.uk



SPORT

Rugby U15s stride out for tour fundraiser

A GROUP of young rugby players, some of whom have been playing together for a decade, are raising funds for their final junior tour.

Keynsham Rugby Club's under 15s aim to raise £4,000 towards their tour in the Netherlands in October.

Their parents are supporting the 24 players' efforts. One said: "The U15s are a fantastic team who have worked unbelievably hard this year. This tour is an amazing opportunity for our players to grow and make memories that will last them a lifetime, as well as celebrating the bonds they have developed over the years."



Players and supporters of Keynsham Rugby Club's U15s at the end of their 15k sponsored walk from Bath

The boys, along with 15 parent and coach volunteers and four furry friends, undertook a 15k sponsored walk from Bath Rugby Ground back to Keynsham Rugby Ground.

After completing the walk in about three hours, they were welcomed back to the Rec in Keynsham by parents, who had been continuing the fundraising

with a tombola, cake and sweet stand for all the age groups to enjoy.

Over 300 players below the age of 16, train and play matches each week at the club.

A club spokesperson said: "We are incredibly grateful for the support of our team parents, and for the generosity of strangers - including one very

kind man who donated the lads £100 as we walked along the cycle track! "

The club is grateful to Uber Plumbing and MJ Patch Engineering Ltd for sponsorship of the tour and is keen to hear from any other businesses able to offer raffle donations or sponsorship. The fundraising page is at tinyurl.com/4525bd9c

Complete your makeover with £600 OFF FLOORING

Available from April 1st to June 30th 2026.



DREAM DOORS®
NEW LIFE FOR OLD KITCHENS

- Up to 50% less than a new fully fitted kitchen
- Replacement kitchen doors
- Cost effective made to measure solution
- Quick installation in 2-3 days by local professionals

Checkatrade.com **9.7/10**
Where reputation matters

11-12 The Promenade,
Gloucester Road,
Bristol, BS7 8AL

Call us now for a free estimate:

01179 443 223



MODERN

CLASSIC

TRADITIONAL

CONTEMPORARY

Terms and Conditions apply. Offer only applies to selected flooring. Participating showrooms only.

DREAMDOORS.CO.UK

THE UK'S #1 KITCHEN MAKEOVER COMPANY

SPORT

Boxer is national champ

ONE student at Snowdon Village Academy has truly boxed clever in an outstanding sporting achievement.

Josh Hayes, a Year 11 student, has recently been crowned a National Junior Boxing Champion. Competing at bantamweight, Josh secured victory against a talented opponent, winning on points after three rounds of a fiercely fought contest in London.

Josh, who started boxing at the age of 10, trains at Paddy John's Gym. He commits to an intense training schedule, working out five times per week and dedicating countless hours of effort, discipline, and determination to his sport.

His success is a testament not only to his natural talent but also to his perseverance and commitment to continuous improvement.

Laura Blacker, of Snowdon Village City School Kingswood Centre Manager said: "We are incredibly proud of Josh's



Josh Hayes

achievement.

"His dedication, resilience, and positive attitude make him a fantastic role model for other students.

"This national title is thoroughly deserved, and we look forward to seeing what he accomplishes next."

FRYS BOWLING CLUB

WITH the sun starting to poke through, Fry's have made a gentle start to the season. First up was a successful friendly at St Anne's Park with Fry's taking the win, before a Saturday friendly at Begbrook Green. The following week saw the first competitive match of the season with a match at Avonvale. Challenging conditions saw Fry's get off to a slow start, but started to get back into the game. Unfortunately, the rain stopped the game early with Avonvale taking the win. The first home game of the season was against Norwest with 5 rinks in play. Across 4 rinks, the honours were tied, with the 5th and final rink 10 shots in Fry's favour, they took the overall win. The ladies started their season on 21st April with a match at Page Park. The Bristol and District League team begin with an away match at Henleaze 'A'.

The social calendar for the season is taking shape, with plans for the annual summer BBQ in July, which will hopefully see a return of the Oldland Ukelele Club along with special guests. A new event for this year will see members take a boat trip along Avon Gorge at the end of August.

Meanwhile, the green and gardening team have been hard at work getting the green and the gardens ready for the new season.

If you would like more information about Frys Bowling Club, or to give bowls a try, please visit our website: frysbowlingclub.wixsite.com/frys, search Frys Bowling Club on Facebook, follow us on X (formerly Twitter): @FrysBowls, or contact our Secretary, Stephen Day, e-mail: frysbowlsclub@gmail.com, tel: 01225 872959.

Send us your sports club's news
news@hanhamandlongwellgreenvoice.co.uk

AERIAL INSTALLER

THE AERIAL MAN

TV Aerial and Satellite Specialist

Poor Reception Problems Solved
OAP Discount Digital Aerials Satellites
Two Year Guarantee Free Quote

CCTV & Ring Doorbells 

Affordable Prices - Reliable Service

0117 967 9028 

www.theaerialman.co.uk | info@theaerialman.co.uk

hanham&longwellgreenvoice

LOCAL SERVICES

To advertise, contact Emma on
0117 9082121 or 07715 770448
or email sales@hanhamandlongwellgreenvoice.co.uk

APPLIANCE REPAIRS

FOR ALL YOUR
DOMESTIC APPLIANCE NEEDS:

Reliable Repairs

Tel: 0117 986 2500

0755 395 0744

ALL MAKES & MODELS

AERIAL SPECIALIST

Est. 2004

The Aerial Co. 

- TV Aerials & Satellites
- Extra Points • Repairs
- Sky Work Undertaken
- Telephone Extensions • TV Wall Mounting
- CCTV • Data Points & Wi-Fi Extensions
- TV/DAB/FM Multi Point Systems
- Solar Panel Bird Meshing Supplied & Installed

Call Nick on 07970 529787
Email: theaerialco@yahoo.com

AERIAL SPECIALIST

WEBB SYSTEMS



webbsystinfo@virginmedia.com

<http://webb-systems.co.uk>

TV/FM/DAB & Satellite Systems supplied and installed
CCTV and data points
TV wall mounting
Wi-fi repeater installations
Solar Panel Bird Mesh installation

Domestic & Commercial clients welcome

FREE QUOTATIONS - SAME DAY CALLOUT

Telephone:
0117 427 1216
07867554777

BATHROOMS

Bespoke Bathrooms & Plumbing

Competitive pricing & free quotations

07790 950351

Bespokebathrooms@hotmail.com

BATHROOMS

PDay Plumbing Services

Bathroom Refurb Specialists

www.pdayplumbingservices.co.uk

info@pdayplumbingservices.co.uk



Call Peter

- Friendly
- Reliable
- Affordable
- Est 2008



07793 746958

CLEANING SERVICES

ABLE CLEANING LIMITED

7 Days - Call for a free quotation

- For the best in carpet cleaning
 - Fully Prochem trained
 - All work insured • Based in Keynsham
- Always here when you need us*



Tel: 07760 320942

www.ablecleaningltd.com

ELECTRICAL SERVICES

Electrician

www.alliedelectrical.co.uk

Do you find it difficult to get someone to come and do a small job?

- Extra lights • Additional sockets.
- Replacement fuseboards • Rewires
- Landlord & homebuyers inspections.

Call Nick on 0117 2872375

I will assure you of a quick response and a reasonably priced service



BUILDING SERVICES



TRADITIONAL BUILDERS

- Property Maintenance
- General Building & Alterations
- Walling / Patios
- Roofing
- Carpentry

FREE QUOTATIONS

Email: tradstoneconstruction@yahoo.co.uk

Tel: 01225 872243 / 07557 505174

COMPUTER REPAIRS

TECHNIC 07564-745591
COMPUTER & E-BIKE BATTERY REPAIR **TECH-NIC.CO.UK**

COMPUTER REPAIR

- Virus Removal & Prevention
- PC Speed-Up & Renewal
- Upgrades (RAM, SSD, etc.)
- Physical Repairs (screen, keyboard, etc.)

E-BIKE BATTERY REPAIR

- Save Batteries, Save Money
- Simple Repairs to Complete Rebuilds
- Full Testing & Balancing Suite

ELECTRICAL SERVICES

Elderwood Electrical

Electrical Installation, Maintenance and Testing

Free Quotes

Inspection and Testing

Landlord Certificates

New builds and Extensions

Extra Sockets and Lights

Fire Alarms, Smoke Detectors

www.ElderwoodElectrical.com

Office - 0117 9322379

Mobile - 07725 058581



BUILDING SERVICES

FATHER & SONS BUILDERS

Est: 60 years

All aspects of Building Works

- Renovations • New Build
- Home Improvements
- Kitchens • Bathrooms
- House Clearance

Free Estimates & Advice - Fully Insured

Tel: 0117 9615741

Mobile: 07802 606528

DRIVEWAYS

AGL DRIVEWAYS

Tarmac, Resin & Block Paving

- A wide range of colours & patterns
- Local Saltford family run business for 70 years
- All work guaranteed • Free estimates
- Pressure washing Driveways & Patios

Tel: 01225 873587
or 07831 453821

www.agldrives.co.uk

GARDEN SERVICES

WOODSMAN TREE CARE

Specialist in all aspects of Tree Surgery

Fully NPTC qualified & insured

07706 855 673

info@woodsmantreecare.co.uk

www.woodsmantreecare.co.uk

CCTV & SECURITY

THE CCTV MAN
Dan Grace

• FREE Security Site Surveys

• CCTV Systems

• Home Alarm Systems

• Stay Connected with remote monitoring 24/7

AUTHORISED INSTALLER OF:
HIKVISION
ahua

LOCAL & RELIABLE | PROFESSIONAL SERVICE | COMPETITIVE PRICES

01179 679028
07818 413451

ELECTRICAL SERVICES

A.R.J. Electrical

Andy Le Huray
07768 654 344
0117 9860 590
mail@arjelectrical.co.uk

www.arjelectrical.co.uk

- Sockets/Lights
- Full Rewires • Showers
- Heating controls • PAT Testing
- Inspection, Testing & Safety checks

Keep It Local

GARDEN SERVICES

All areas covered

Keynsham Tree Removal & Stump Grinding

- Tree felling • Stump grinding • Fencing
- All tree & hedge work undertaken
- Fencing • Waste removal • Garden dig outs
- Mini Digger & Operator • Micro Digger & dumper (tight access no problem)
- Good rates & reliable service

Tel: 0117 9861652
Mobile: 07747 131431

GARDEN SERVICES

D ATTWELL & SONS LANDSCAPING

Whether you're looking for new patios, garden fencing, new decking installations, or turf laying our landscapers are here to help



Call now for a free quote
07960 681921

www.dattwellandsonslandscaping.co.uk

GARDEN SERVICES



Hanham Gardening Company

Full garden maintenance
One off garden tidy
Lawn mowing
Bush trimming • Tree works
Weeding • Borders • Fencing

All work fully insured
07889 041 888

HOUSE & RUBBISH CLEARANCE



HOUSE CLEARANCE
GARAGE CLEARANCE
GARDEN CLEARANCE
GENERAL RUBBISH CLEARANCE

FULLY LICENSED AND INSURED

MINIMUM COLLECTION FROM £59 INC VAT - FREE QUOTATIONS

Visit us: www.junkmonsters.co.uk
Email us: info@junkmonsters.co.uk
Call us: 07592 506 003

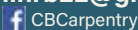
KITCHEN SPECIALISTS



CBCarpentry

Reliable, Local Carpenter & Kitchen Fitter
30 years experience
City & Guilds approved
• Kitchen & Worktops • Doors
• Skirting • Handrails & Spindles
• Wood & Laminate Flooring • Decking
All types of Carpentry

Call: Colin 07977 997557
Email: colinrb22@gmail.com



CBCarpentry

KITCHEN SPECIALISTS

M J CRAWFORD CARPENTRY & KITCHEN FITTING LTD

Your local carpenter who carries out all types of carpentry work.

- Kitchens • Bathrooms
- Doors • Skirting • Flooring
- Decking • Pvc cladding

Call Matt on 07909 928413
or 01179 864304 for a free quote

E: mjcrawfordcarpentrykitchen@yahoo.com
W: www.mjcrawfordcarpentry.co.uk

LOCKSMITH

24 HOUR LOCKSMITH & DOUBLE GLAZING REPAIRS

Dale Clements

24 hour Locksmith Service (all types of doors)

Locks, Handles and Hinges Repaired

Misted and Broken Glass Replaced

Realign Dropped Doors and Windows

www.daleclements.co.uk

0117 3690046

Mobile: 07970 019830

NO CALL OUT FEE
Fixed prices



PAINTING DECORATING

STUART DANIELS Painter & Decorator

Est 1982

City & Guilds Qualified - Local Decorator
Internal & External Decorating
Wallpapering

Fully Insured - No VAT

07738 549581

Email: sharyn.daniels@btinternet.com

PAINTING DECORATING

Steve & Charlotte Rioch

Painting & Decorating Specialist

- No Job To Small • No VAT
- Interior & Exterior Decorating
- Free Quotation
- 40 Years Experience

For A Free Quotation

Call Steve On

07943 537798

stevenrioch@gmail.com

PLASTERING SERVICES

Fine Finish
Plastering & Building
JAMES BATRAM City Guilds
07842 528804
[finefinish1983](https://www.instagram.com/finefinish1983)

PAINTING DECORATING

SJM DECORATING

Professional Decorating
Local Qualified tradesmen
Internal & External Decorating
Fast, reliable & friendly service
Fully insured

Free Quotations

Call Scott 07515 523 623

0117 3824411

www.sjmdecorating.freeindex.co.uk

PAINTING DECORATING



Renovation ■ Painter ■ Tiler ■ Decorator

- Interior & Exterior Masonry ■ Tiling
- Interior & Facade Painting
- No Job Too Small ■ Free Quote
- 17 Years Experience

T: 0117 382 7716 / 07557 335 956

E: dacriscobuilder9@gmail.com



PLUMBING SERVICES



- Plumbing, Gas & Heating Services
- Boiler installations • Boiler repairs
- Boiler servicing

Contact **Evo Heat** on
Tel: **0117 4504794** or **07506 698 832**
Email: info.evoheat@icloud.com

PLUMBING SERVICES



Cherry Plumbing & Heating Services
Over 20 yrs experience
EST 2004
Boiler Breakdown
Service & Installation
Engineer
All makes and models worked on
Call **Darren** on
07787 956651



PLUMBING SERVICES

LOCAL PLUMBER

- * TAPS, WASHERS
- * BALL VALVES
- * LEAKS, WASTES
- * OVERFLOWS, DRIPS
- * LEAD PIPES
- * TOILETS, FLUSHES



CALL
GARY



(0117)
9564912
O.A.P. DISCOUNTS

ROOFING SERVICES

RF CARPENTRY INSTALLATIONS

All aspects of carpentry and roofing work undertaken

* Over 30 years' experience *

- Bespoke • Kitchens
- Bathrooms
- Worktop jointing
- Doors • Flooring
- Handrails and spindles
- Interior and exterior decorating
- Roofing repairs
- Chimney repairs
- Complete reroofs
- Flat roofs
- Fascia boards and gutters
- Storm damage
- Insurance work

*** No job too small ***

For a friendly free quotation, call Ross on

Tel: 07738 054042
0117 987 0177

rforcarpentry@hotmail.co.uk



PLUMBING SERVICES

LOW COST PLUMBING



- Taps, Washers ✓
- Toilets, Cisterns ✓
- Leaks, Blockages ✓
- Tanks, Overflows ✓
- Lead Pipes, Stopcocks....etc... ✓

OAP DISCOUNTS and NO VAT

0117 **957 5092**

PROPERTY MAINTENANCE

T.L.C HOME & PROPERTY MAINTENANCE

- Bathroom & Kitchen Installation
- Plumbing • Wall & Floor Tiling
- Interior & Exterior Painting & Decorating
- Guttering & Fascias • Plastering
- Patios, Paving & Timber Decking
- Fencing & Walls • Total Refurbishments

NO JOB TOO SMALL - CONTACT US FOR
A FREE NO OBLIGATION ESTIMATE

tel: **07974 222656**
email: williamtlc@hotmail.co.uk

TREE SERVICES



Fully qualified & insured tree surgeon
All aspects of tree surgery

Contact James:
07837629316

jhstreeservices@outlook.com

PLUMBING SERVICES

BESPOKE BATHROOMS & PLUMBING

07790950351

NO PLUMBING JOB TOO SMALL
COMPETITIVE PRICING & FREE QUOTATIONS

- Bathrooms • Sinks • Radiators
- Leaks • Showers • Taps • Basins
- Toilets • Tiling • Ball Valves

BESPOKEBATHROOMS@HOTMAIL.COM

ROOFING & PROPERTY

Tom's Roofing & Property Maintenance
All ASPECTS OF ROOFING

- REFELT & BATTENS • REROOFS
- ROOF REPAIRS • FLAT ROOFING
- CHIMNEY REPAIRS • LEAD WORK
- FASCIA SOFFITS • GUTTERS

24 hours emergency callout
Call now for a free quote

Tel: 0117 9861652
Mob: 07747 131431

tomsroofingandmaintenance@yahoo.com

WASTE DISPOSAL

Harvey's Waste & Garden Services

We load and clear unwanted waste ...
cheap and fast. House clearances to
single items. Garages & sheds cleared.

PLUS

Tree trimming, fencing, hedge and grass cutting

07956 548756

NO JOB TOO BIG OR SMALL
harveyswgs@outlook.com any time to book



ST. ALDAMS FARM NURSERY

EST. 1973

BUY DIRECT FROM THE GROWER

THE BEST PLANTS AT THE BEST PRICES



Bedding Plants
20 PLANTS

£7.50



Fuschias FROM

£2.50



Geraniums FROM

£2.50



Begonias

£2.50



Large selection of Ceramic Pots



Growmore Multi Purpose Compost

£7.50 or £20 for 3



What do we supply?

- Extensive range of bedding plants
- Large selection of ceramic pots and gifts
- Hanging baskets and plastic containers
- Huge selection of perennials
- Range of composts

Look forward to your visit.
Come and find us on The Westerleigh
Road between Pucklechurch village and
the Westerleigh Crematorium

SEE OUR WEBSITE
FOR SPECIAL OFFERS

www.staldamsnursery.co.uk



OPEN 7 DAYS - Mon-Sat: 9am-5pm Sun 9am to 4pm

WESTERLEIGH ROAD, PUCKLECHURCH, BRISTOL BS16 9PY